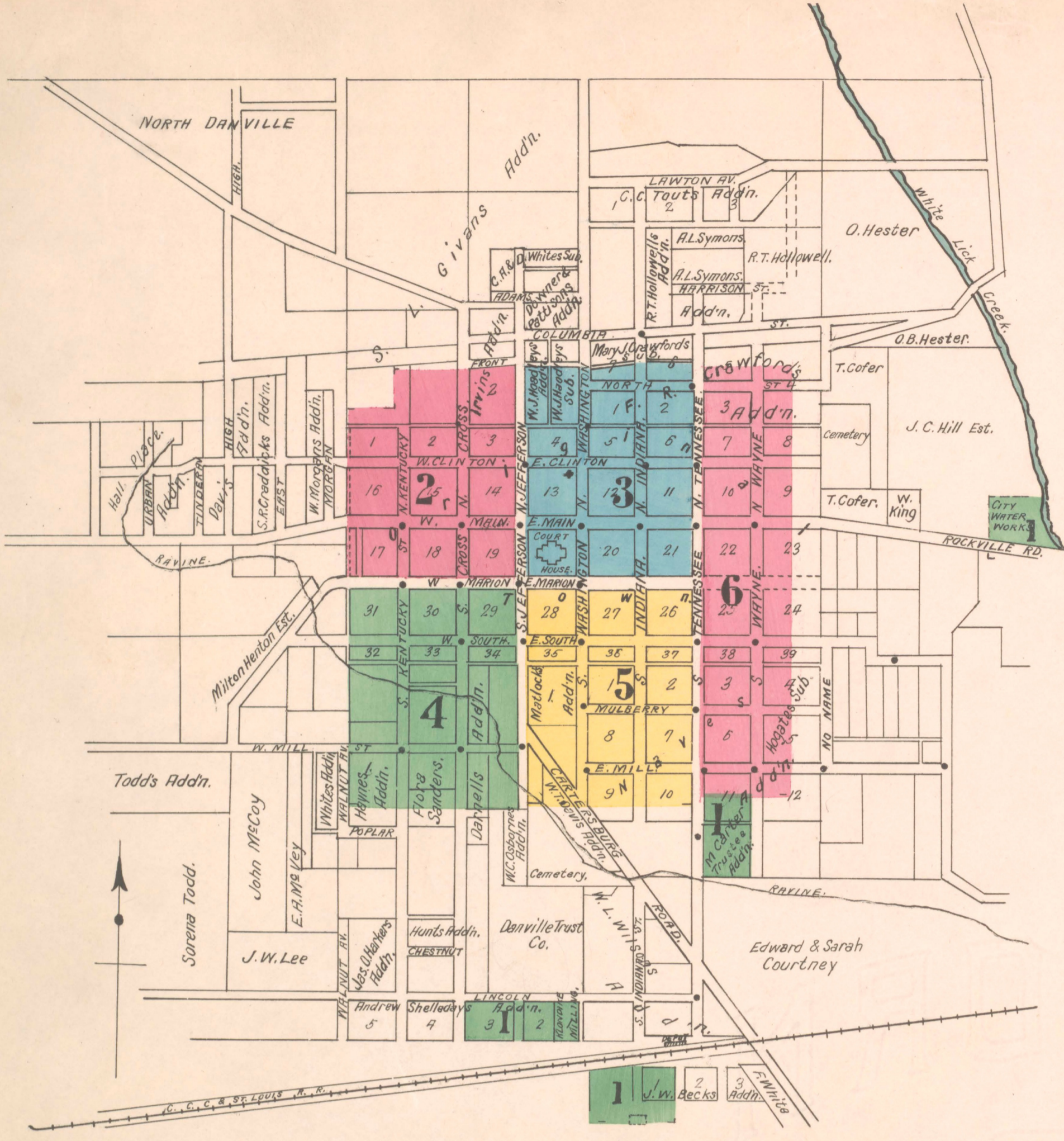


Scale of Feet
0 50 100 150
Copyright 1922 by the GenCorp-Maryland



2

3



WATER FACILITIES: Source of supply, 6 Driven Wells Stand Pipe System, 1 Deane Comp. Duplex F.P. 8x12x7x10 Cap. 300,000 Gals. per 24 hrs. 1 Deane Comp. Duplex F.P. 12x18x10x10 Cap. 1,000,000 Gals. per 24 hrs. Pumping from 6 Artesian Wells 2-2", 2-3" & 2-4" 11' deep to Stand Pipe 12" diam. 100' high Cap. 85,000 Gals. Domestic Pressure from 50 to 80 lbs. Direct Pressure from Pumps to 150 lbs. Daily Water Consumption 500,000 Gals. 45 D.H. 3" Meters 4" & 8" Water Mains.

FIRE DEPARTMENT: Vol. under charge of City Marshal. 1 Hose Reel. 300' 2 1/2" hose kept at McClellands. Livery (SHEET No 9) No other fire apparatus. Streets not paved. Grades slightly rolling. 30 Street Arc. Lights.

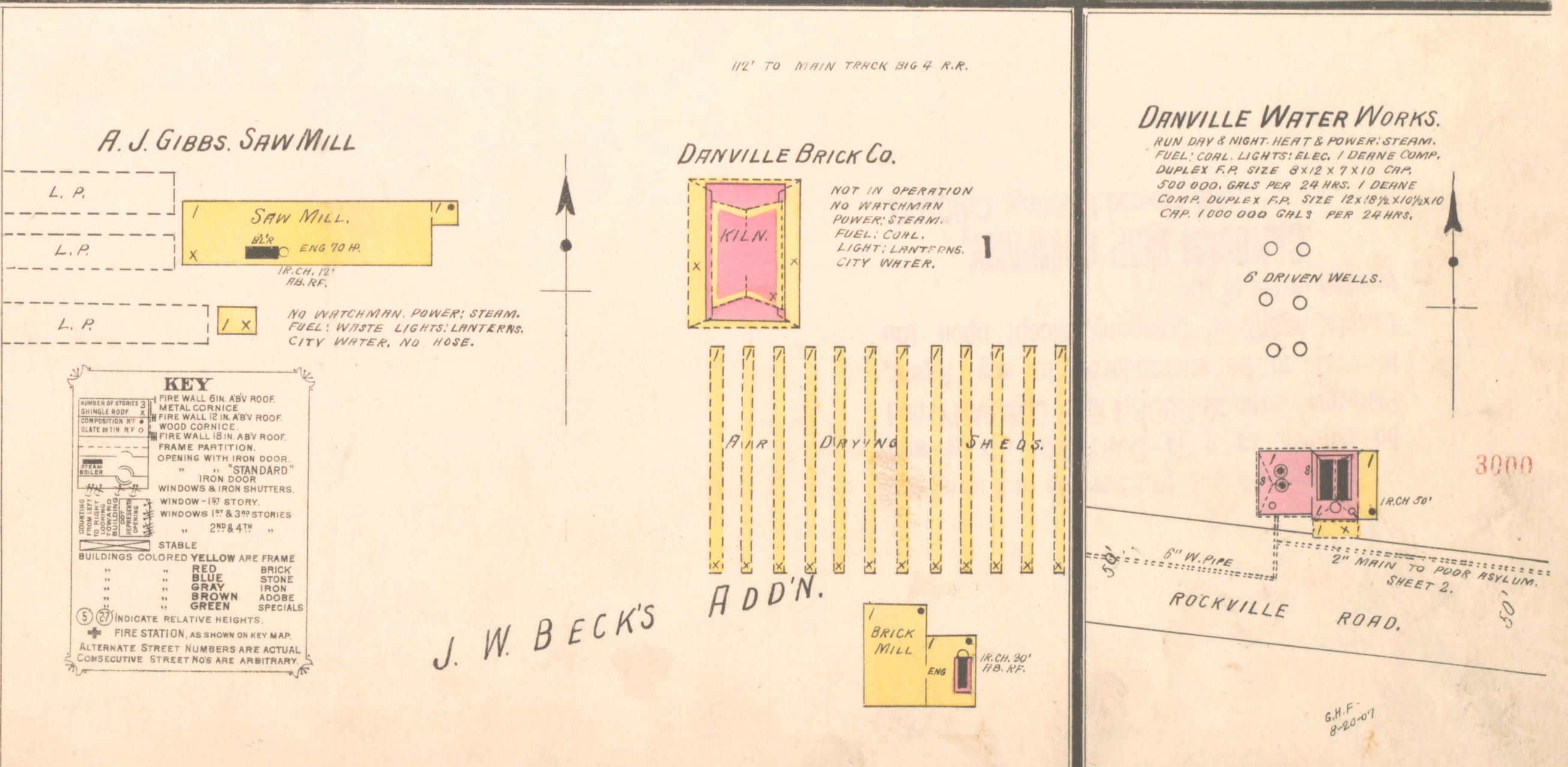
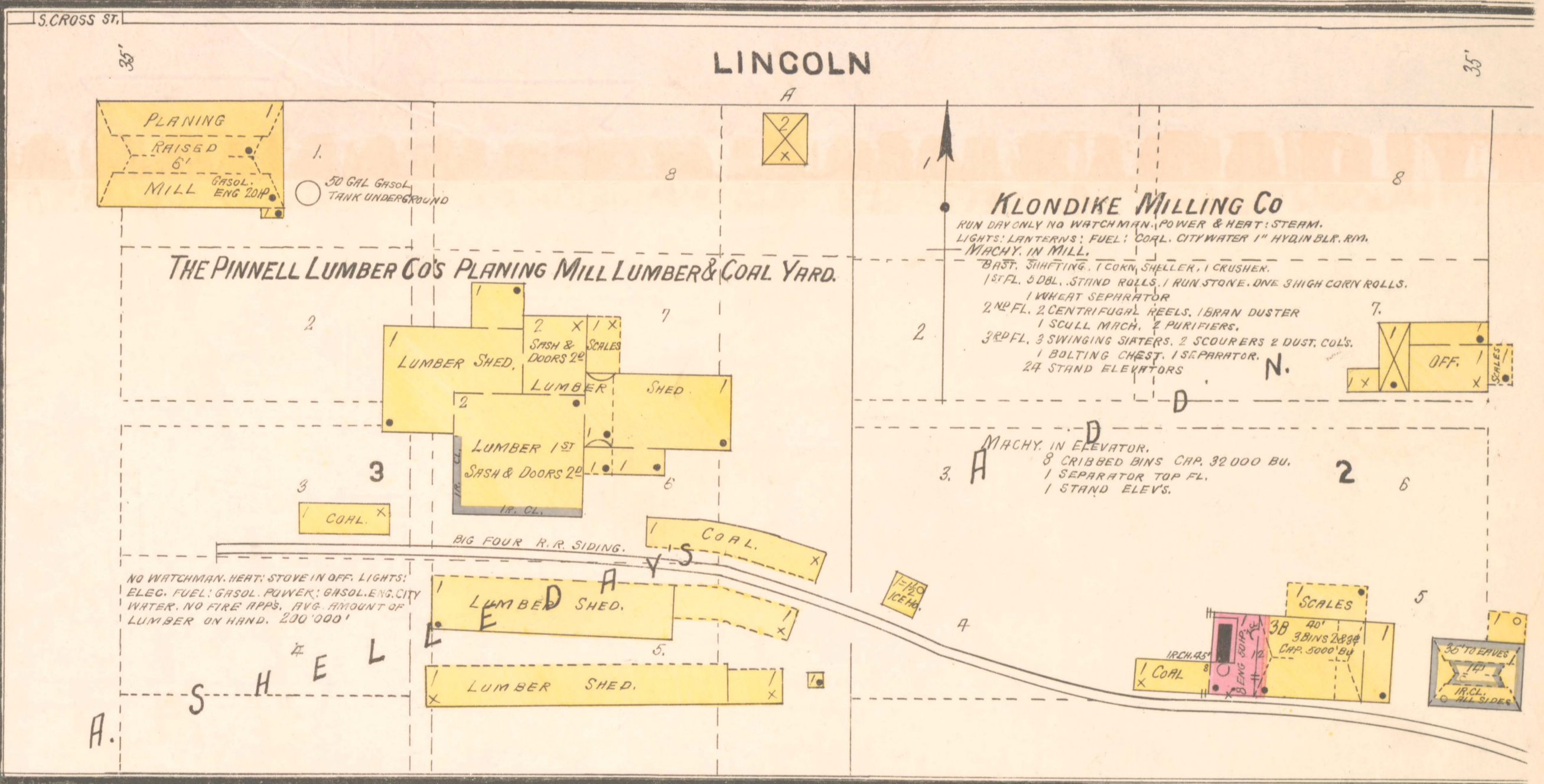
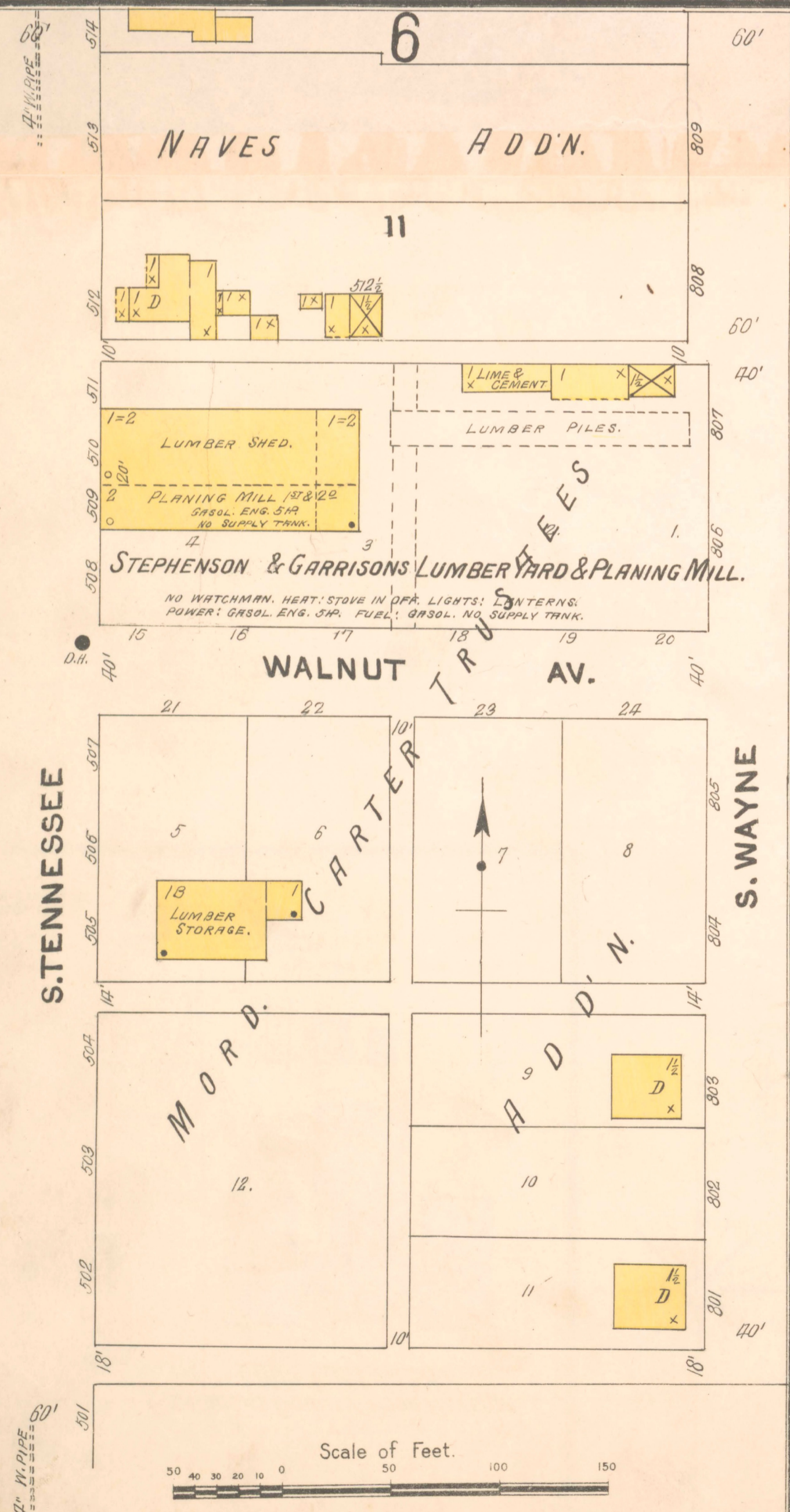
3000

INDEX

STREETS		SPECIALS	
STREET	INDEX	STREET	INDEX
Cartersburg	5	Walnut Ave.	1, 4
Clinton, E.	1-72	Washington, N.	1-70 3
" W.	73-98	" S.	1-30 3
" W.	1-72	" S.	81-120 5
Cross, N.	1-66	Wayne, N.	1-112 6
" S.	1-24	" S.	113-135 *1
" S.	25-116 4		
Front	2		
Indiana, N.	1-68 3		
" S.	1-24 3		
" S.	25-104 5		
Jefferson, N.	1-67 *2		
" S.	2-70 *3		
" S.	1-25 *2		
" S.	2-24 *3		
" S.	26-116 *5		
" S.	27-115 *4		
Kentucky, N.	1		
" S.	1-24 1		
" S.	25-116 4		
Main, E.	1-72 3		
" W.	73-116 6		
" W.	1-74 2		
Marion, E.	1-75 *5		
" S.	2-72 *8		
" S.	74-114 6		
" W.	1-75 *4		
" W.	2-72 *2		

SPECIALS	
STREET	INDEX
Central Normal College	6
County Court House	5
" Jail	3
" Poor Asylum	2
Cumberland Presbyterian Church	3
Danville Brick Co.	1
" High School	2
" Light, Water & Power Co.	4
" Water Works	1
Estep Block	3
Fire Department	3
First Christian Church	2
" M. E. Church	5
Friends' Meeting House	4
Gibbs, A. J., Saw Mill	1
Klondike Milling Co.	1
People's Theatre	3
Public Library	5
" School	5
Sanders Hotel	5
Stephenson & Garrison, Planing Mill	1
Towles Hotel	3

NOTE - * indicates only one side of street shown.



KEY

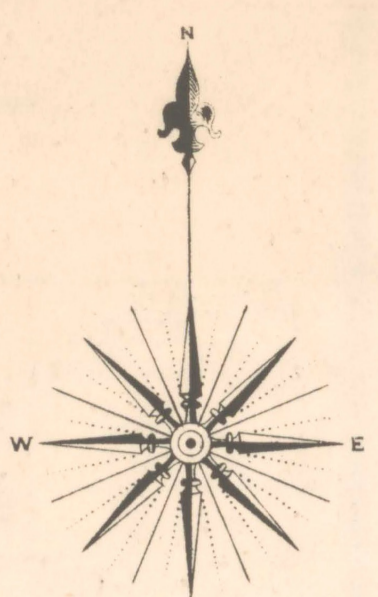
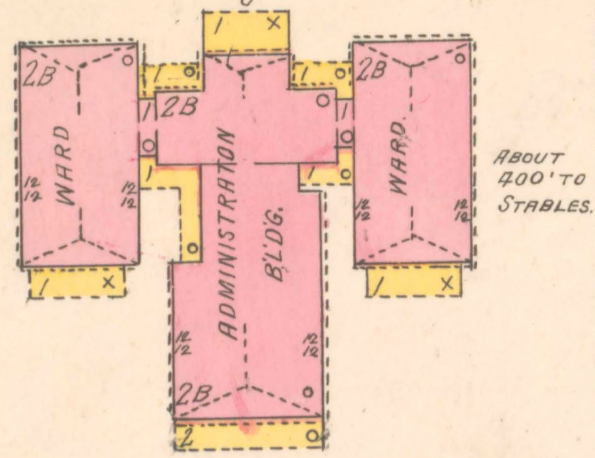
SHINGLE ROOF	FIRE WALL 6 IN ASV ROOF
SLATE WITH RT O	METAL CORNICE
SLATE WITH RT O	FIRE WALL 12 IN ASV ROOF
WOOD CORNICE	WOOD CORNICE
FRAME PARTITION	FRAME PARTITION
OPENING WITH IRON DOOR	OPENING WITH IRON DOOR
" " " " " "	" " " " " "
IRON DOOR	IRON DOOR
WINDOWS & IRON SHUTTERS	WINDOWS & IRON SHUTTERS
WINDOW - 1ST STORY	WINDOW - 1ST STORY
WINDOWS 1ST & 3RD STORIES	WINDOWS 1ST & 3RD STORIES
" " " " " "	" " " " " "
2ND & 4TH	2ND & 4TH

STABLE BUILDINGS COLORED YELLOW ARE FRAME
 RED BRICK
 BLUE STONE
 GRAY IRON
 BROWN ADobe
 GREEN SPECIALS

(S) INDICATE RELATIVE HEIGHTS.
 FIRE STATION AS SHOWN ON KEY MAP.
 ALTERNATE STREET NUMBERS ARE ACTUAL
 CONSECUTIVE STREET NOS ARE ARBITRARY.

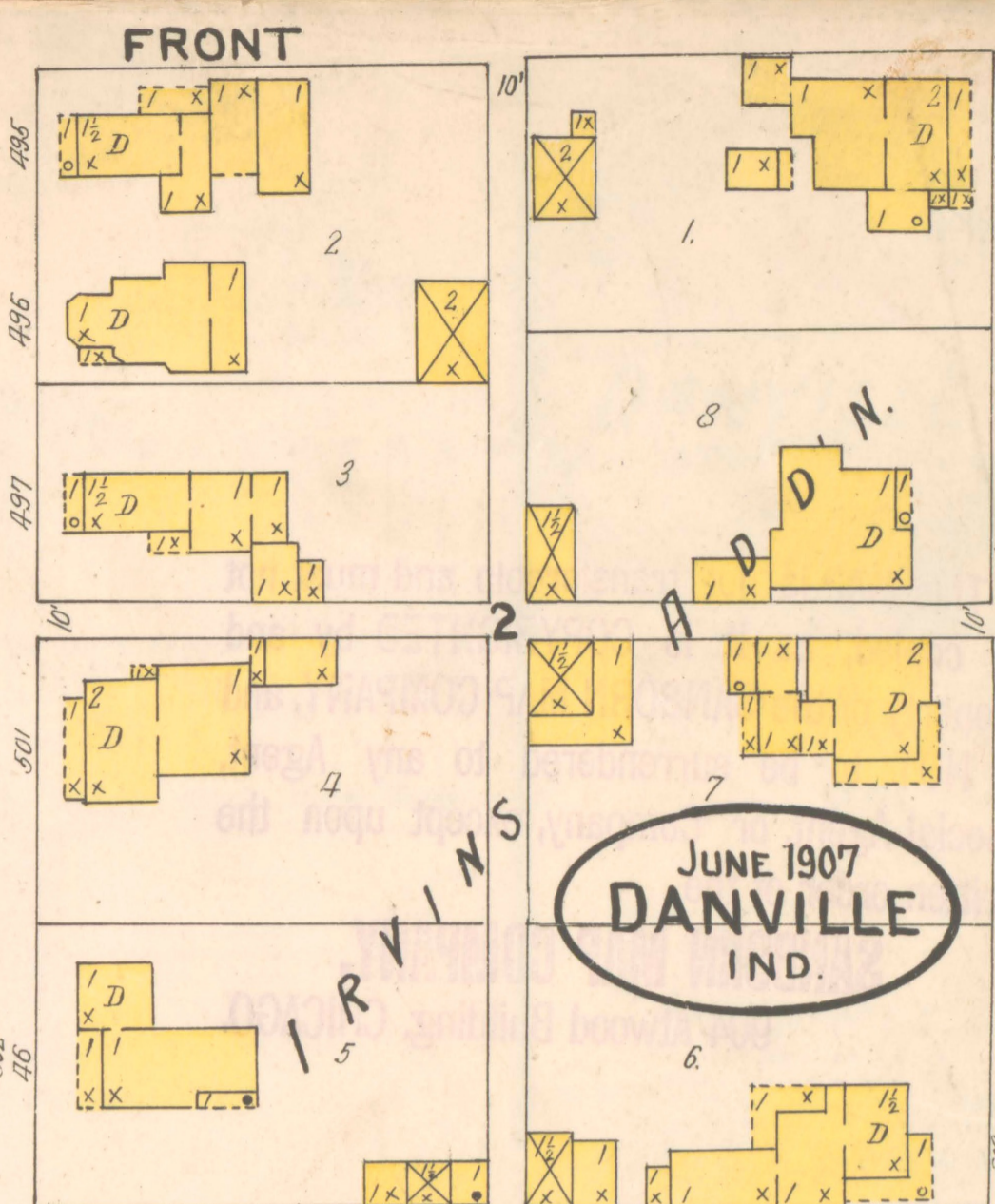
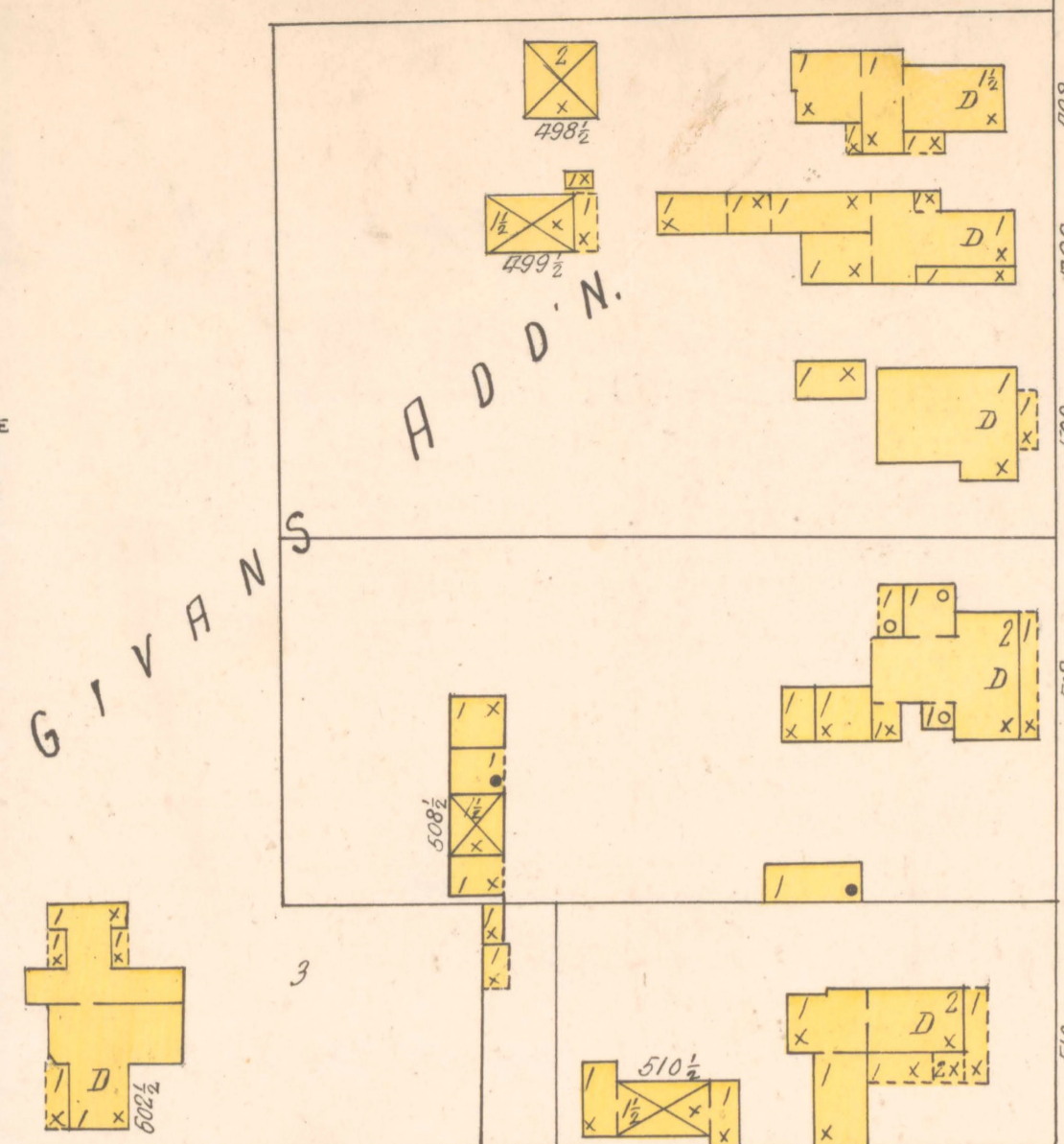
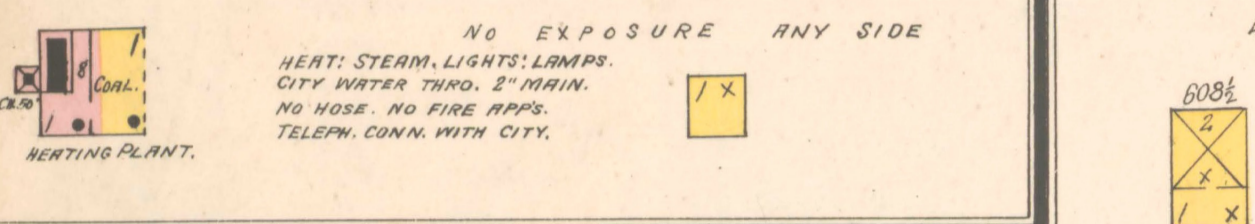
3000

HENDRICKS COUNTY POOR ASYLUM.
1 Mile E. of Court Ho.

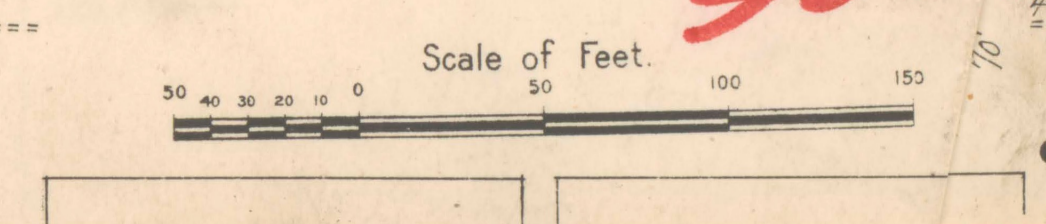
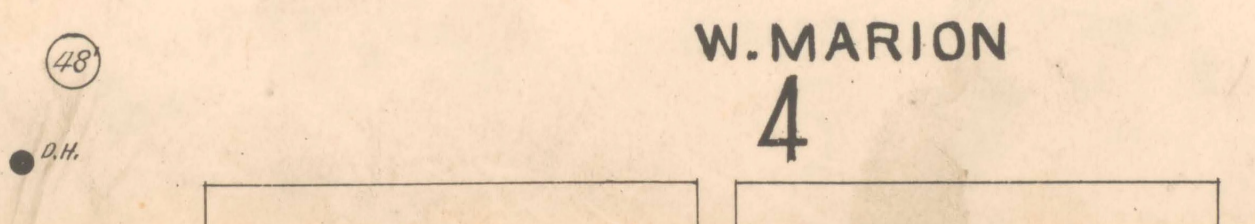
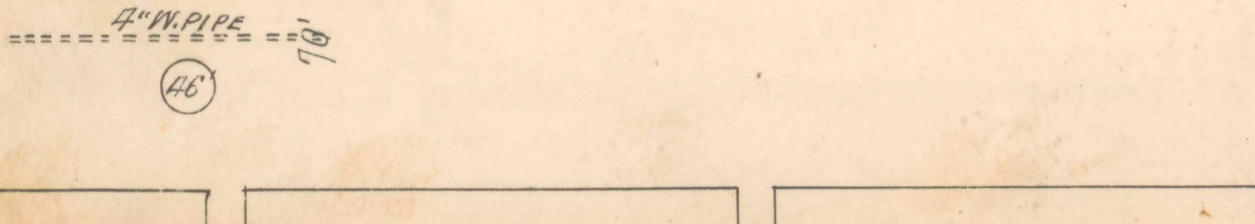
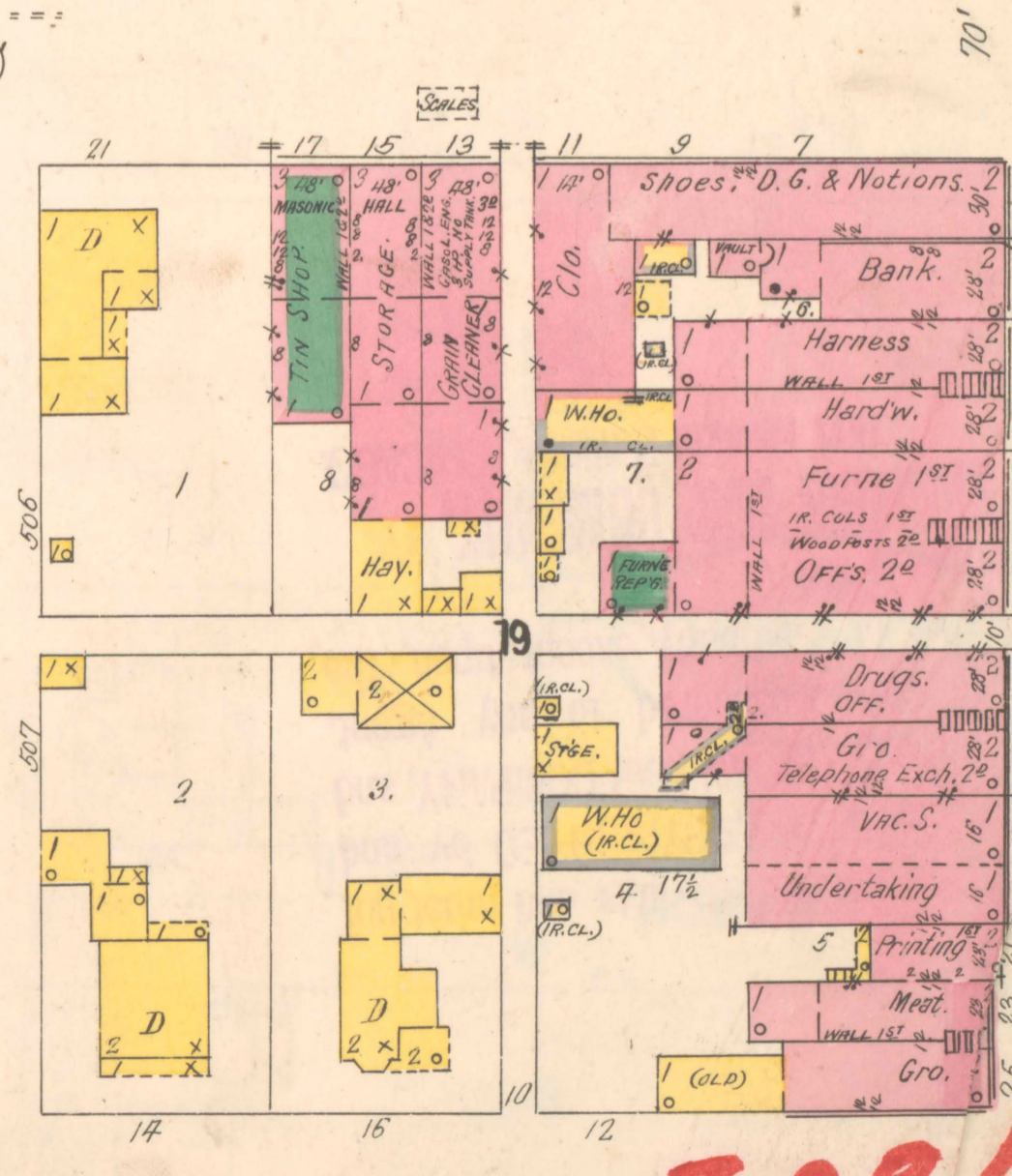
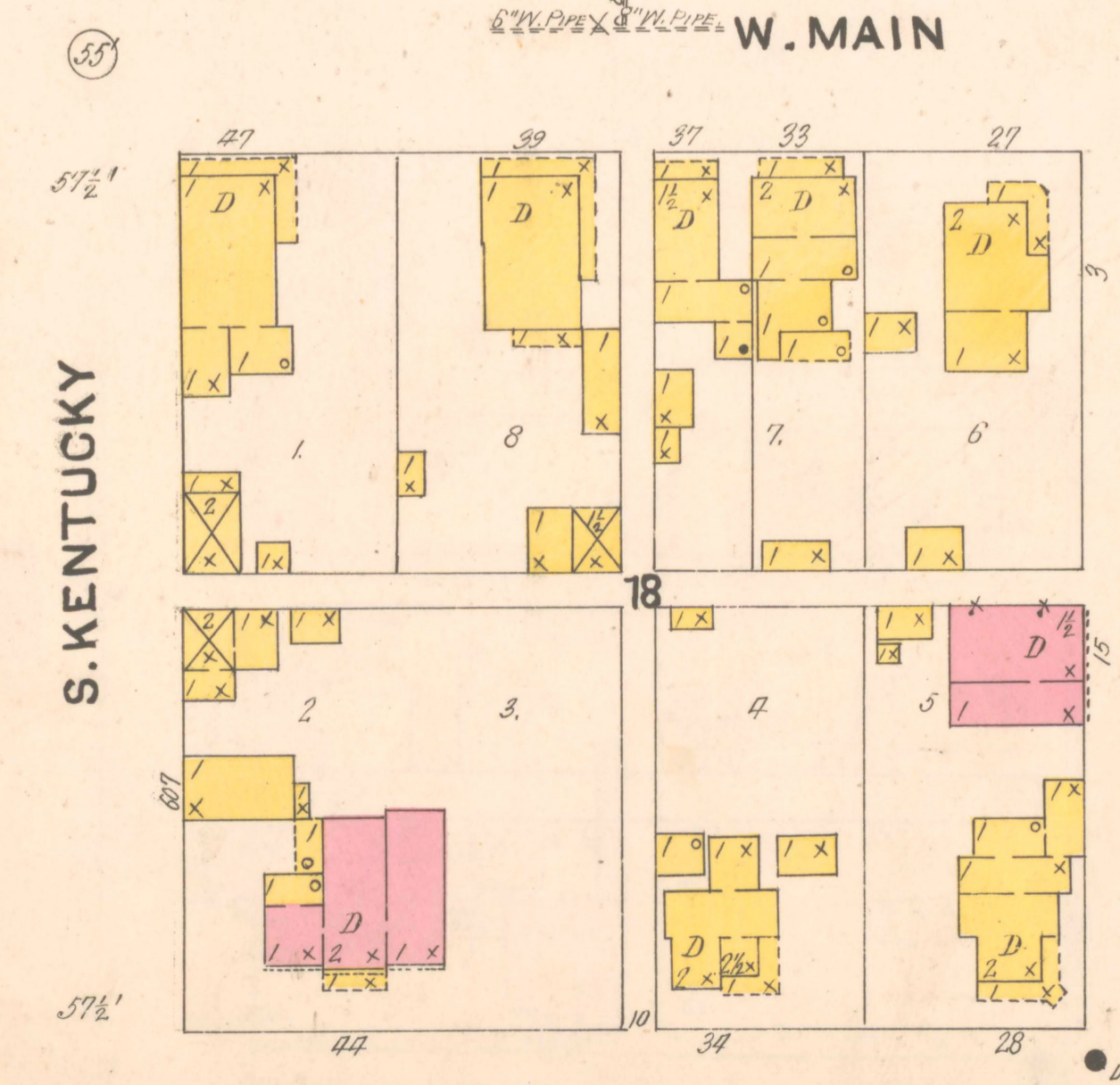
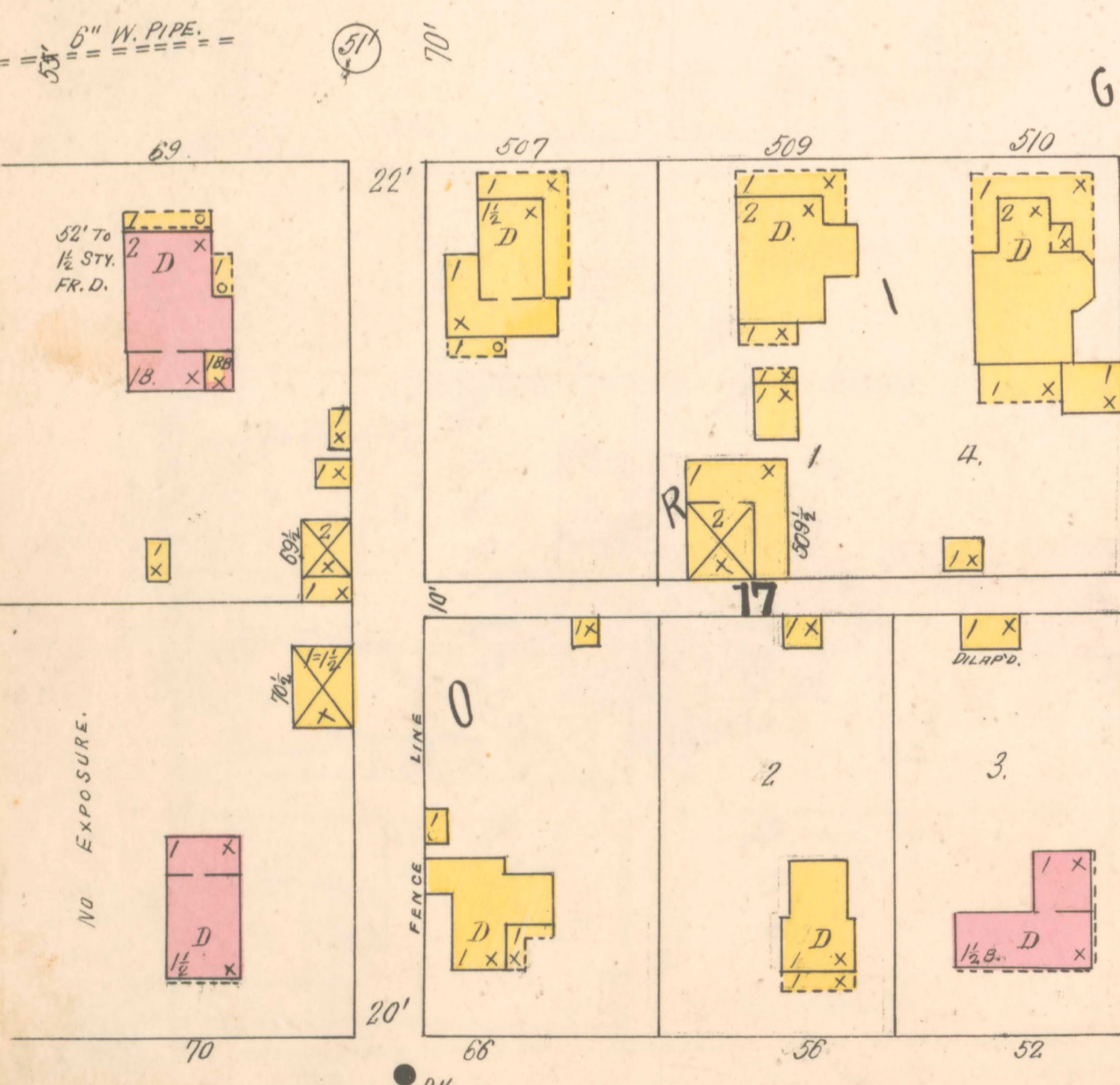
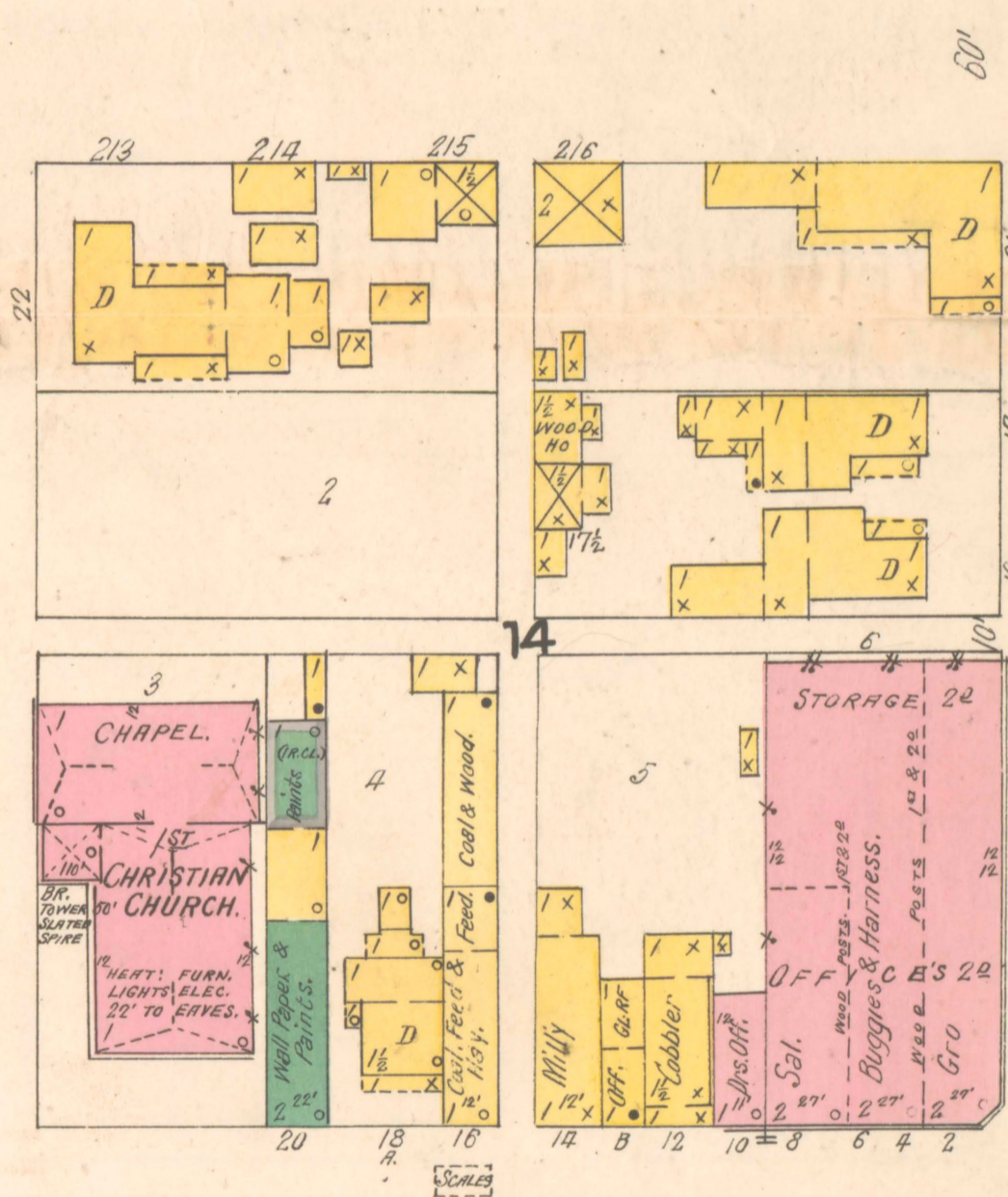
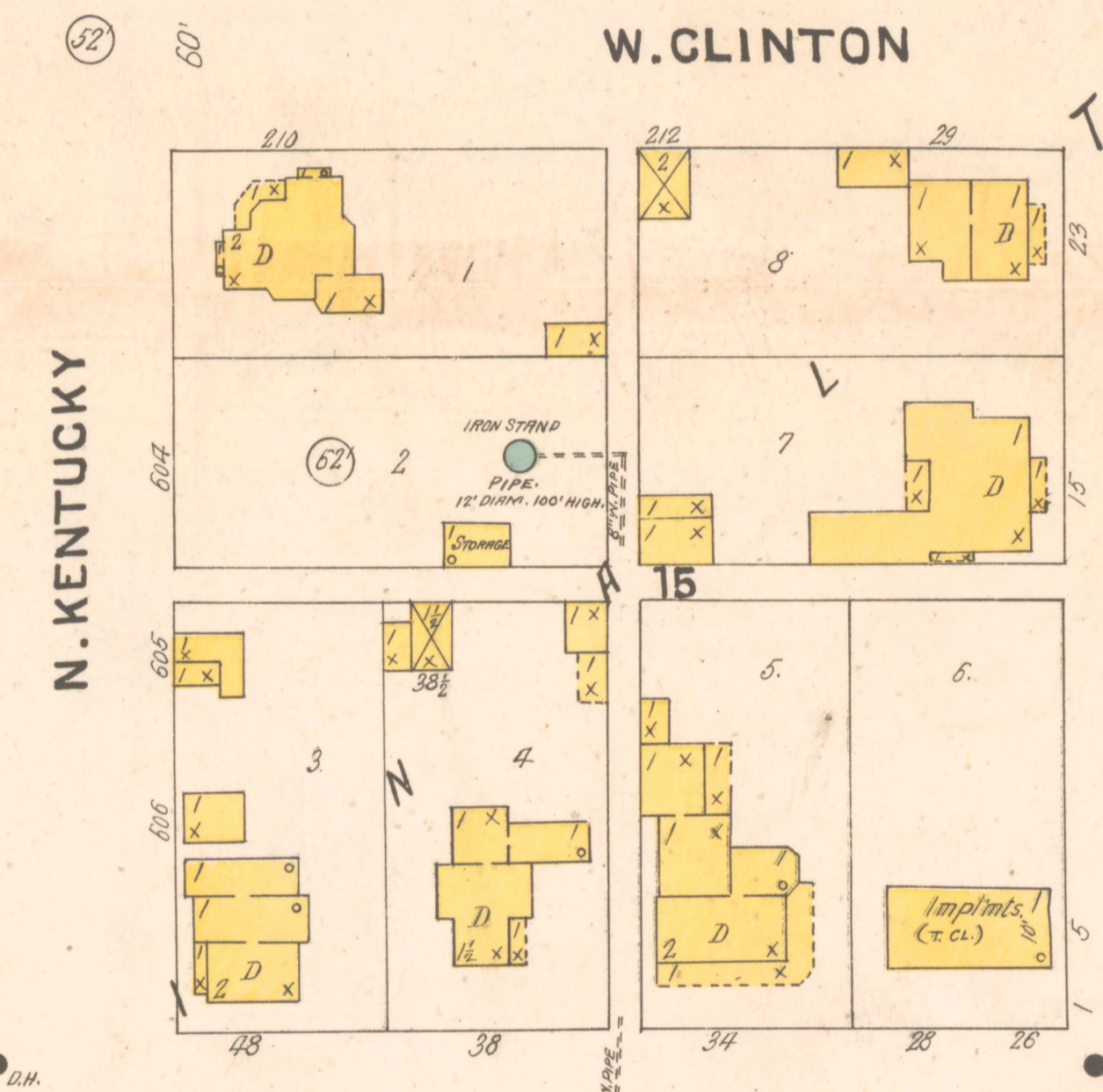
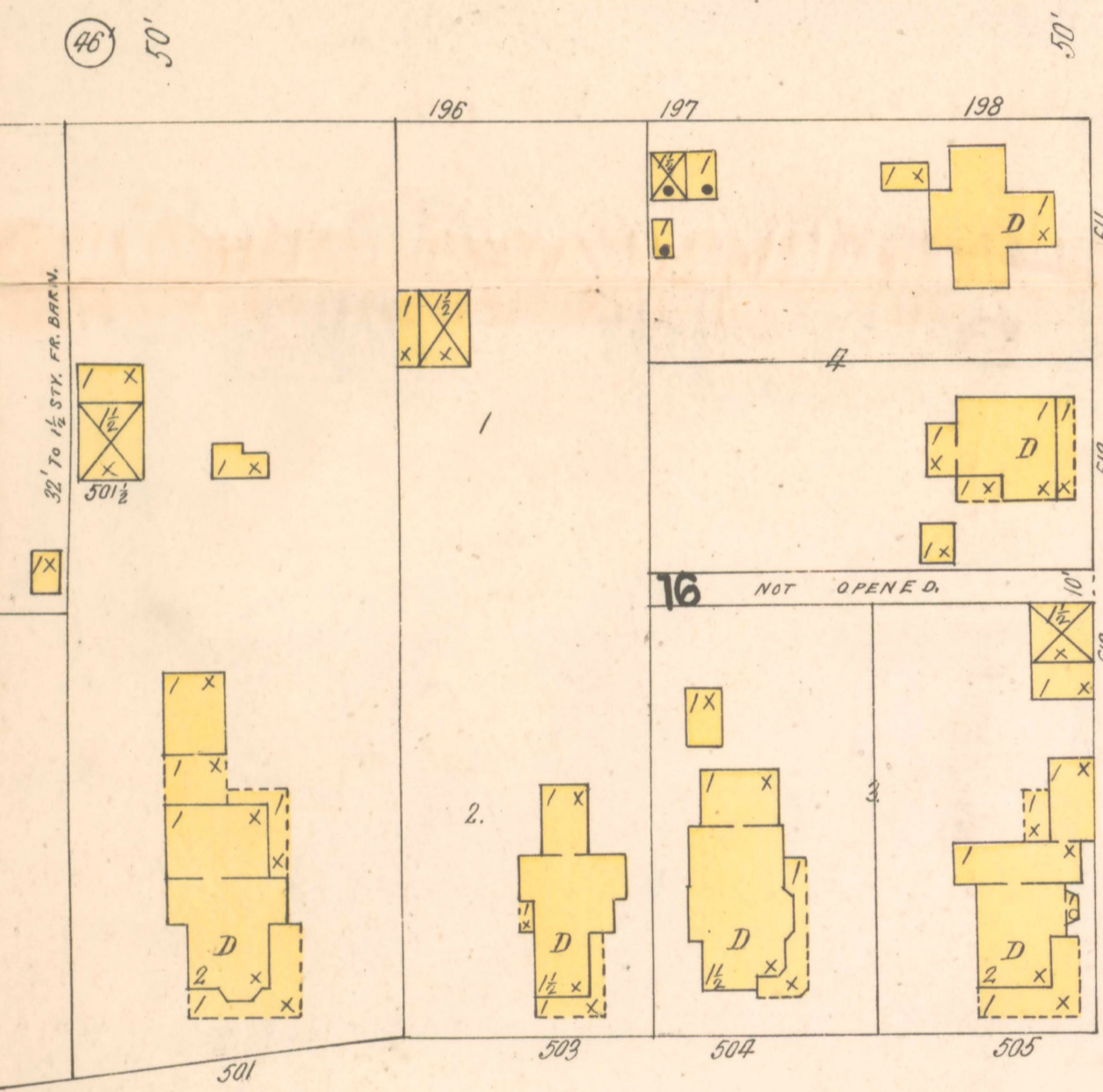
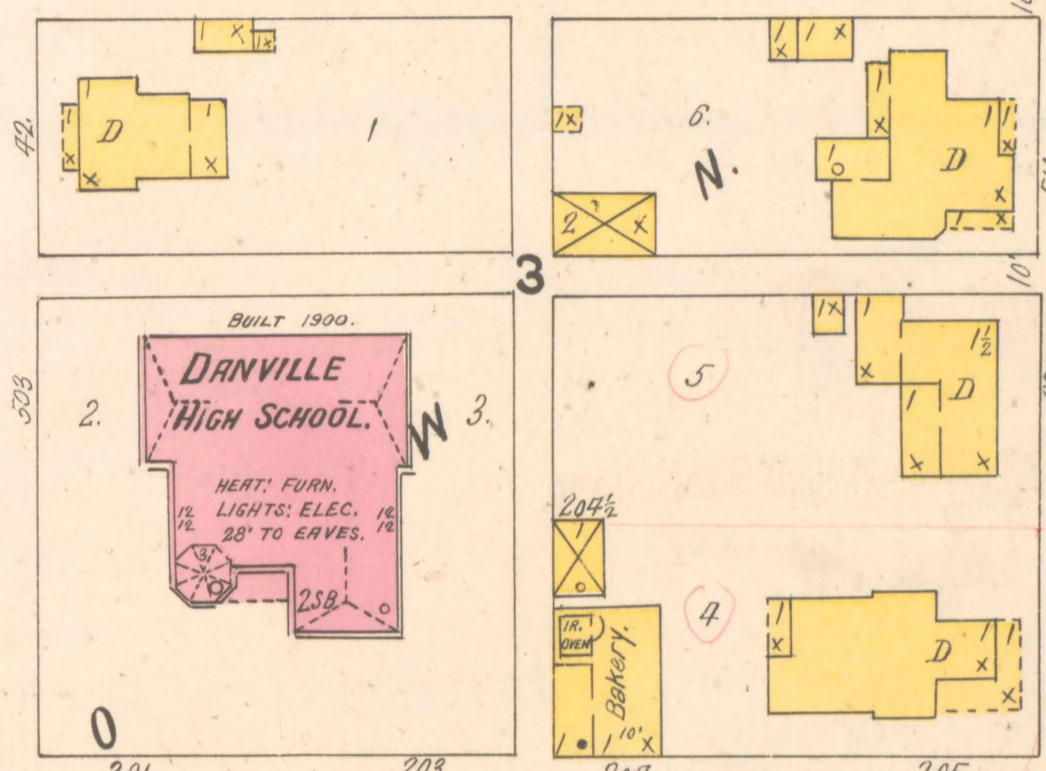
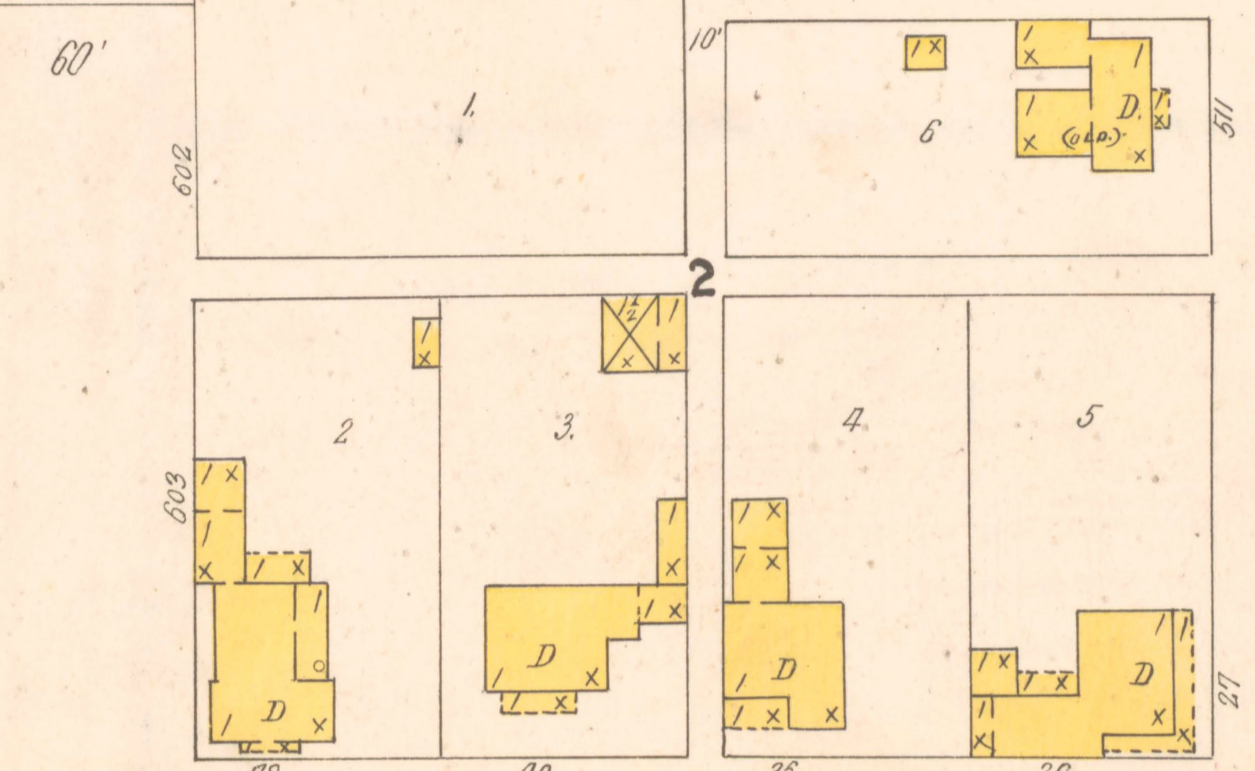
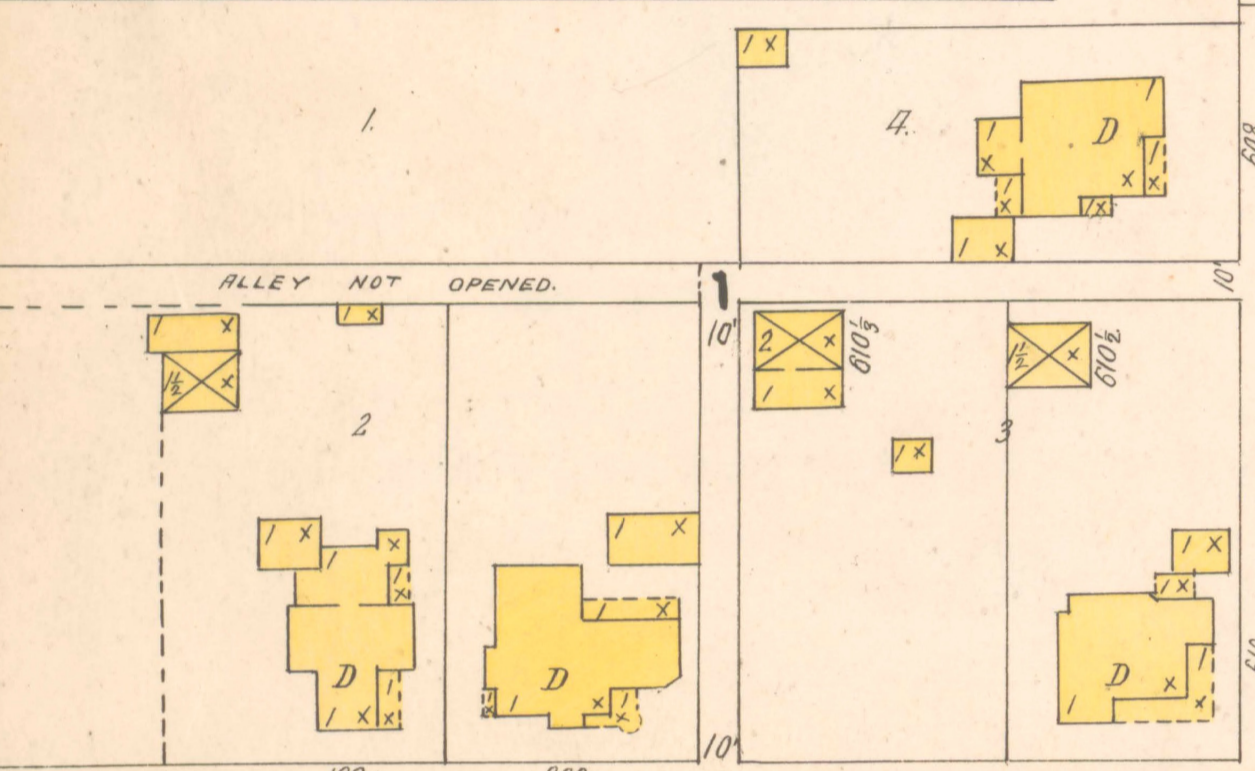


3001

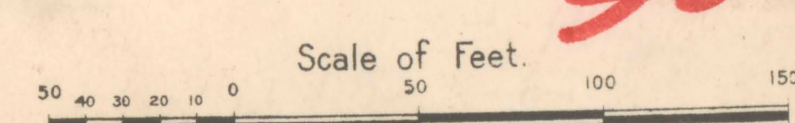
NO EXPOSURE ANY SIDE
HEAT: STEAM, LIGHTS: LAMPS.
CITY WATER THRO. 2" MAIN.
NO HOSE, NO FIRE ROPS.
TELEPH. COMM. WITH CITY.



JUNE 1907
DANVILLE
IND.



W. MARION
4

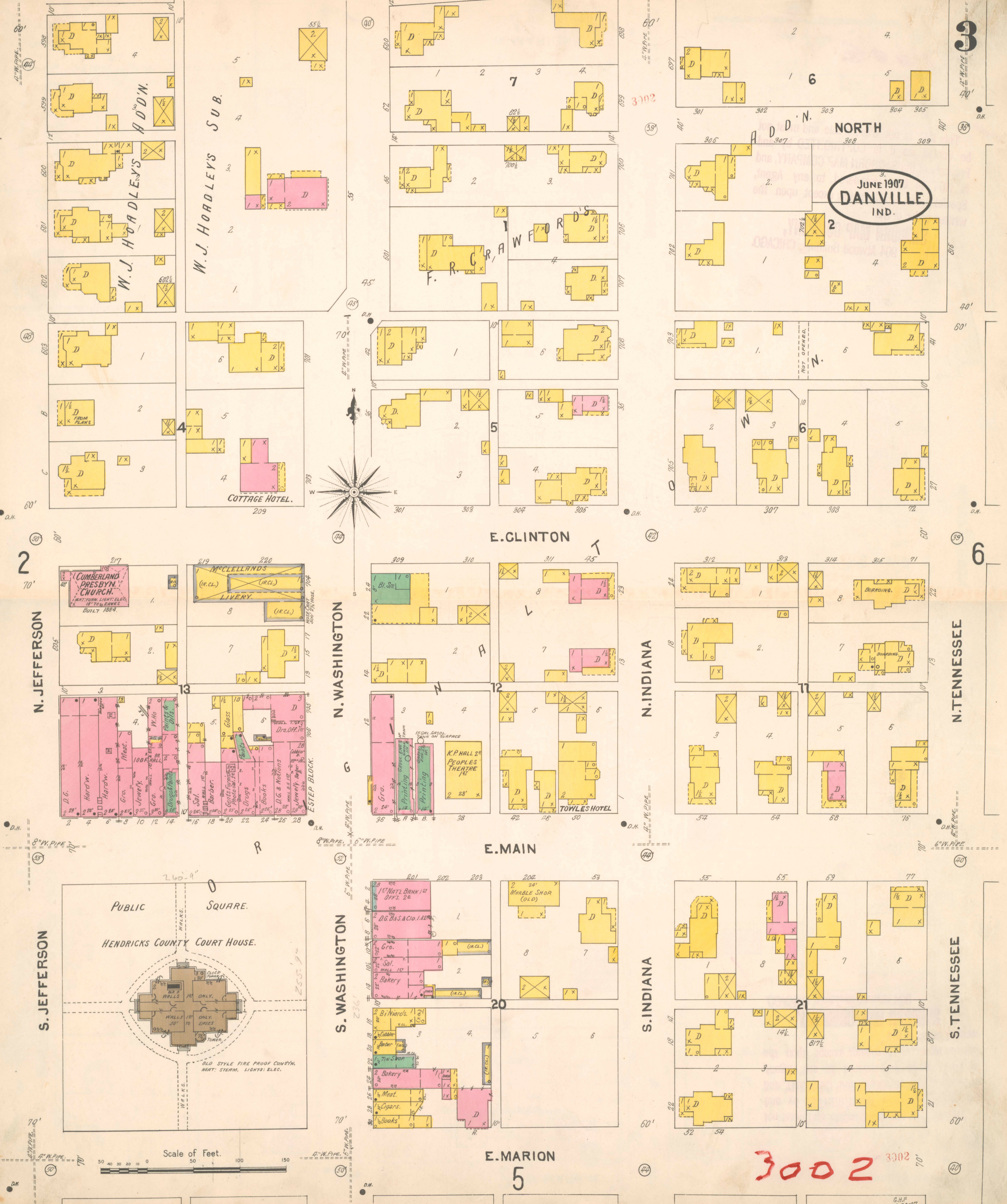


3001

2

3

3001



JUNE 1907
DANVILLE
IND.

3002

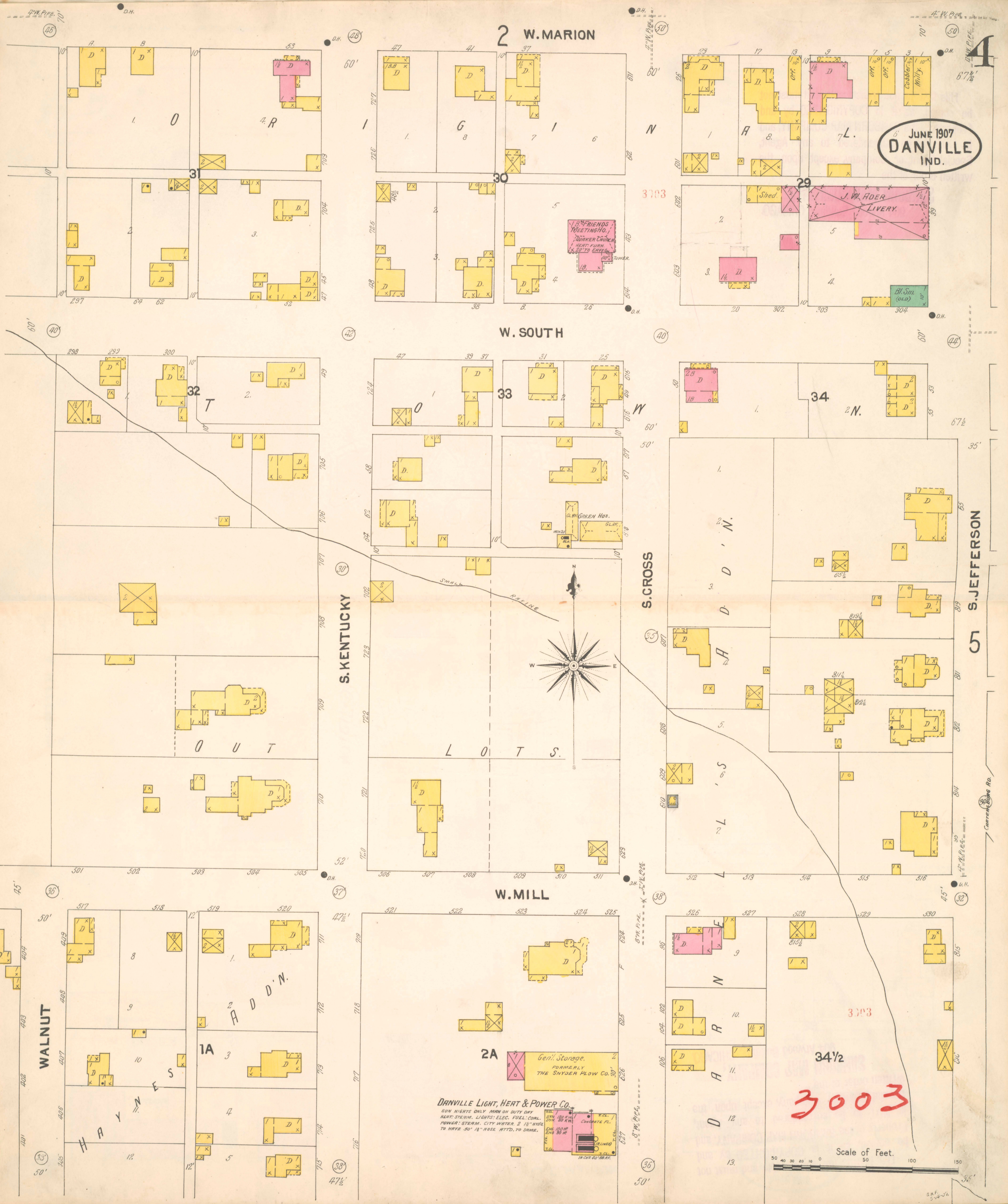
5

6

2

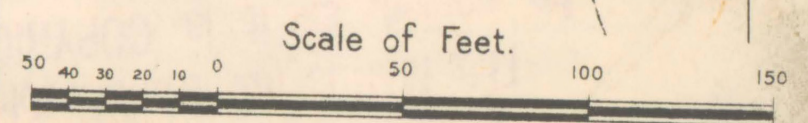
Scale of Feet.

G.H.F. 8-20-07



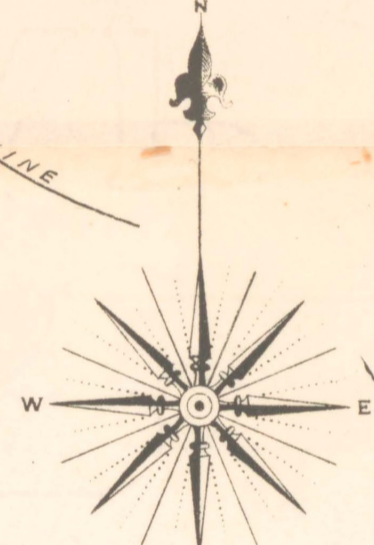
JUNE 1907
DANVILLE
IND.

3003



DANVILLE LIGHT, HEAT & POWER CO.
RUN NIGHTS ONLY MAN ON DUTY DAY
HEAT, STEAM, LIGHTS, ELEC. FUEL, COAL,
POWER, STEAM, CITY WATER, 2 1/2" WIDE
TO HAVE 30" 14" HOSE ATT'D. TO SAME.

2A
Gen'l. Storage.
FORMERLY
THE SNYDER FLOW CO.



S. KENTUCKY

W. MILL

S. CROSS

S. JEFFERSON

W. SOUTH

W. MARION

WALNUT

HAYMAN

HAYMAN

HAYMAN

HAYMAN

HAYMAN

HAYMAN

HAYMAN

HAYMAN

HAYMAN

HAYMAN

HAYMAN

HAYMAN

32

30

37

38

33

30

38

36

34

35

38

36

34 1/2

35

38

36

3103

3103

34 1/2

3003

3003

3003

J. W. FIDER
LIVERY.

J. W. FIDER
LIVERY.

B. Sm.
(old)

2. N.

2. N.

2. N.

2. N.

2. N.

2. N.

2. N.

2. N.

2. N.

2. N.

2. N.

2. N.

2. N.

2. N.

2. N.

2. N.

2. N.

2. N.

2. N.

2. N.

2. N.

2. N.

2. N.

2. N.

2. N.

2. N.

2. N.

2. N.

2. N.

2. N.

2. N.

2. N.

2. N.

2. N.

2. N.

2. N.

2. N.

2. N.

2. N.

2. N.

2. N.

2. N.

2. N.

2. N.

2. N.

2. N.

2. N.

2. N.

2. N.

2. N.

2. N.

2. N.

2. N.

2. N.

2. N.

2. N.

2. N.

2. N.

2. N.

2. N.

2. N.

2. N.

2. N.

2. N.

2. N.

2. N.

2. N.

2. N.

2. N.

2. N.

2. N.

2. N.

2. N.

2. N.

2. N.

2. N.

2. N.

2. N.

2. N.

2. N.

2. N.

2. N.

2. N.

2. N.

2. N.

2. N.

2. N.

2. N.

2. N.

2. N.

2. N.

2. N.

2. N.

2. N.

2. N.

2. N.

2. N.

2. N.

2. N.

2. N.

2. N.

2. N.

2. N.

2. N.

2. N.

2. N.

2. N.

2. N.

2. N.

2. N.

2. N.

2. N.

2. N.

2. N.

2. N.

2. N.

2. N.

2. N.

2. N.

2. N.

2. N.

2. N.

2. N.

2. N.

2. N.

2. N.

2. N.

2. N.

2. N.

2. N.

2. N.

2. N.

2. N.

2. N.

2. N.

2. N.

2. N.

2. N.

2. N.

2. N.

2. N.

2. N.

2. N.

2. N.

2. N.

2. N.

2. N.

2. N.

2. N.

2. N.

2. N.

2. N.

2. N.

2. N.

2. N.

2. N.

2. N.

2. N.

2. N.

2. N.

2. N.

2. N.

2. N.

2. N.

2. N.

2. N.

2. N.

2. N.

2. N.

2. N.

2. N.

2. N.

2. N.

2. N.

2. N.

2. N.

2. N.

2. N.

2. N.

2. N.

2. N.

2. N.

2. N.

2. N.

2. N.

2. N.

2. N.

2. N.

2. N.

2. N.

2. N.

2. N.

2. N.

2. N.

2. N.

2. N.

2. N.

2. N.

2. N.

2. N.

2. N.

2. N.

2. N.

2. N.

2. N.

2. N.

2. N.

2. N.

2. N.

2. N.

2. N.

2. N.

2. N.

2. N.

2. N.

2. N.

2. N.

2. N.

2. N.

2. N.

2. N.

2. N.

2. N.

2. N.

2. N.

2. N.

2. N.

2. N.

2. N.

2. N.

2. N.

2. N.

2. N.

2. N.

2. N.

2. N.

2. N.

2. N.

2. N.

2. N.

2. N.

2. N.

2. N.

2. N.

2. N.

2. N.

2. N.

2. N.

2. N.

2. N.

2. N.

2. N.

2. N.

2. N.

2. N.

2. N.

2. N.

2. N.

2. N.

2. N.

2. N.

2. N.

2. N.

2. N.

2. N.

2. N.

2. N.

2. N.

2. N.

2. N.

2. N.

2. N.

2. N.

2. N.

2. N.

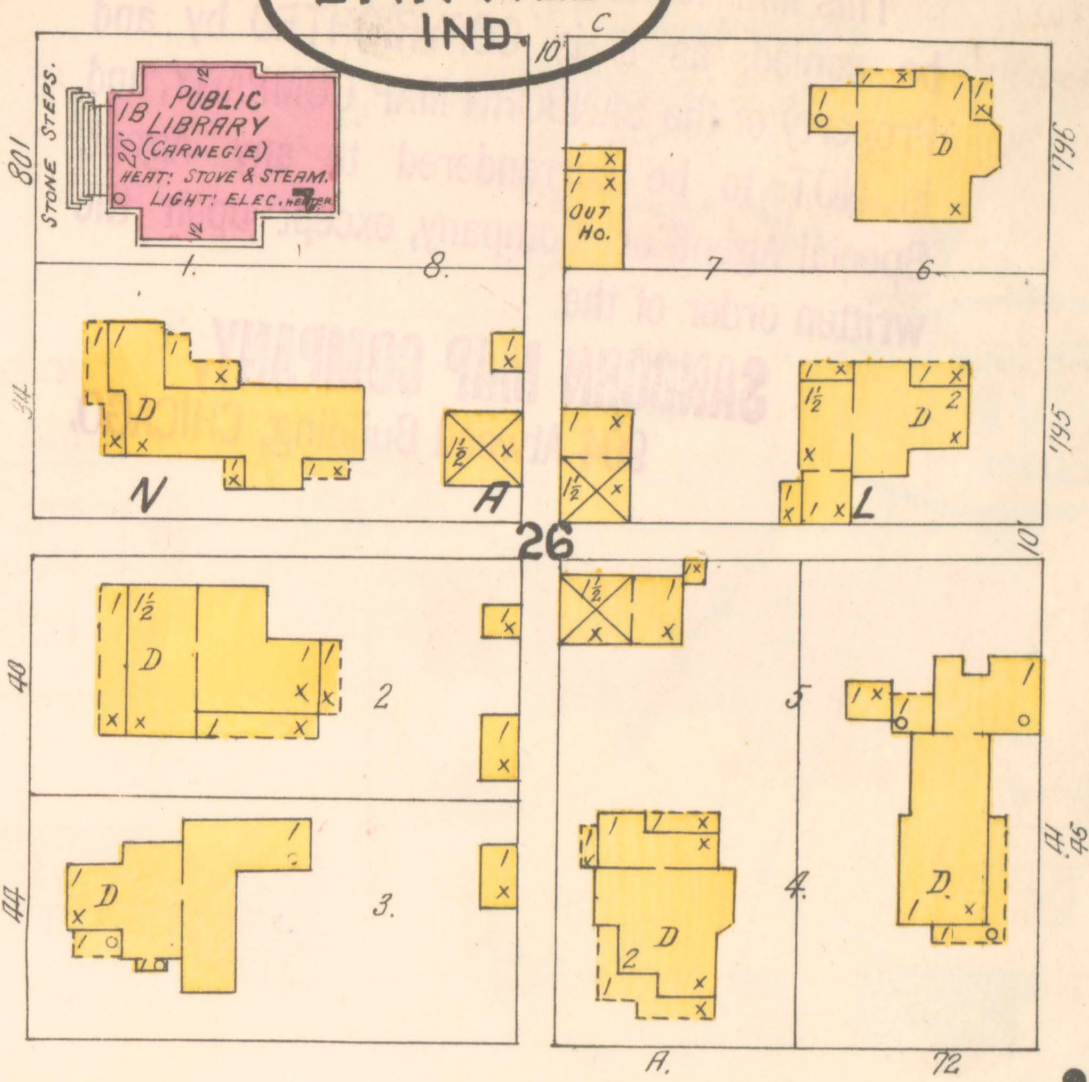
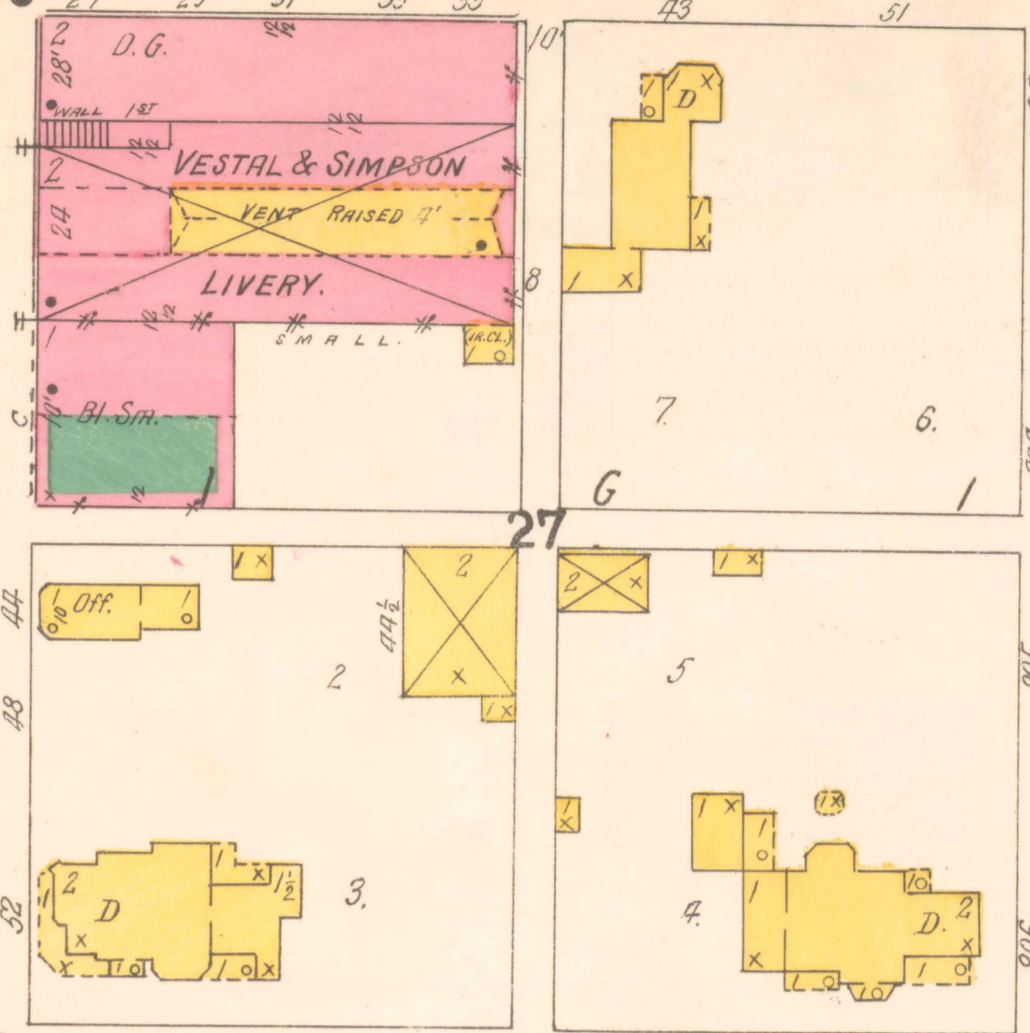
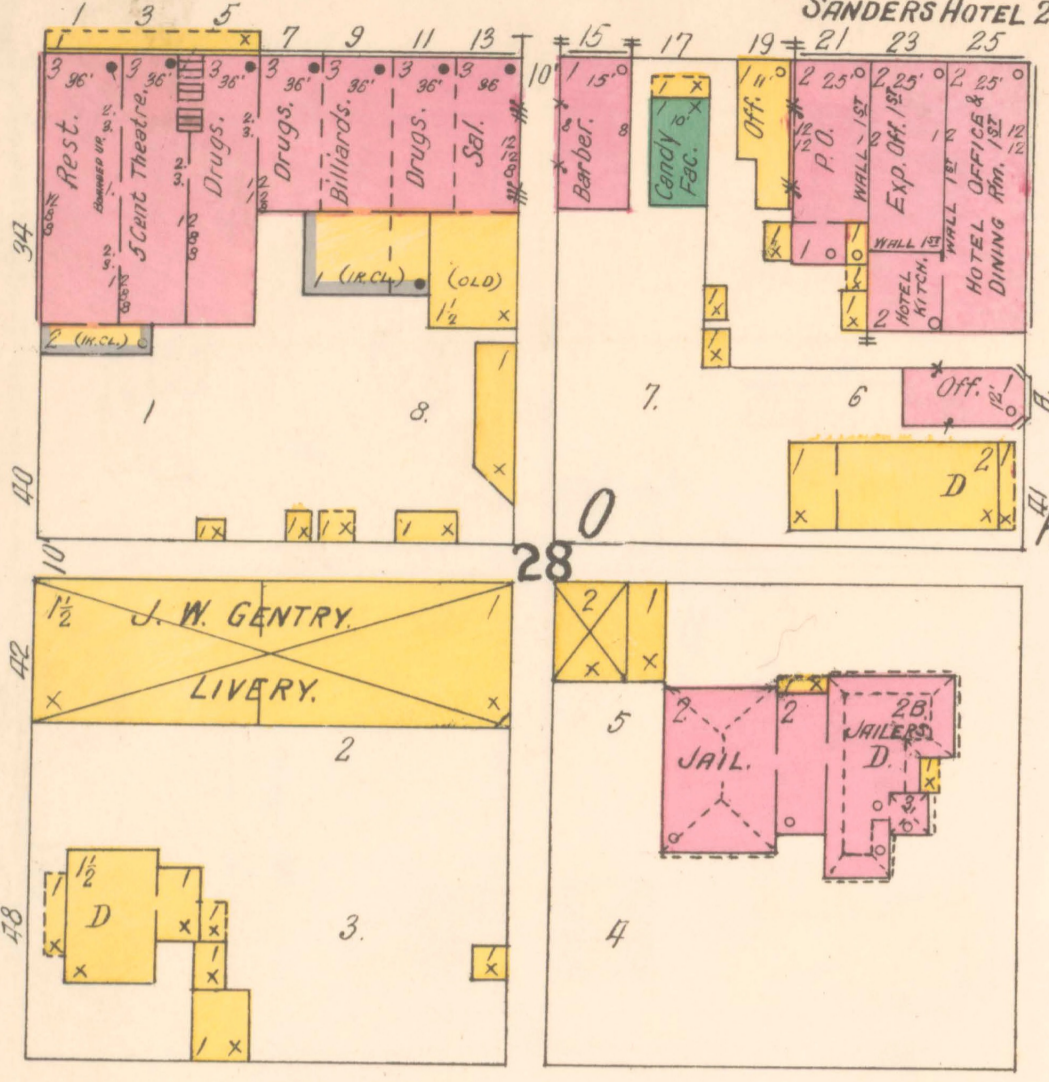
<

JUNE 1907
DANVILLE
IND.

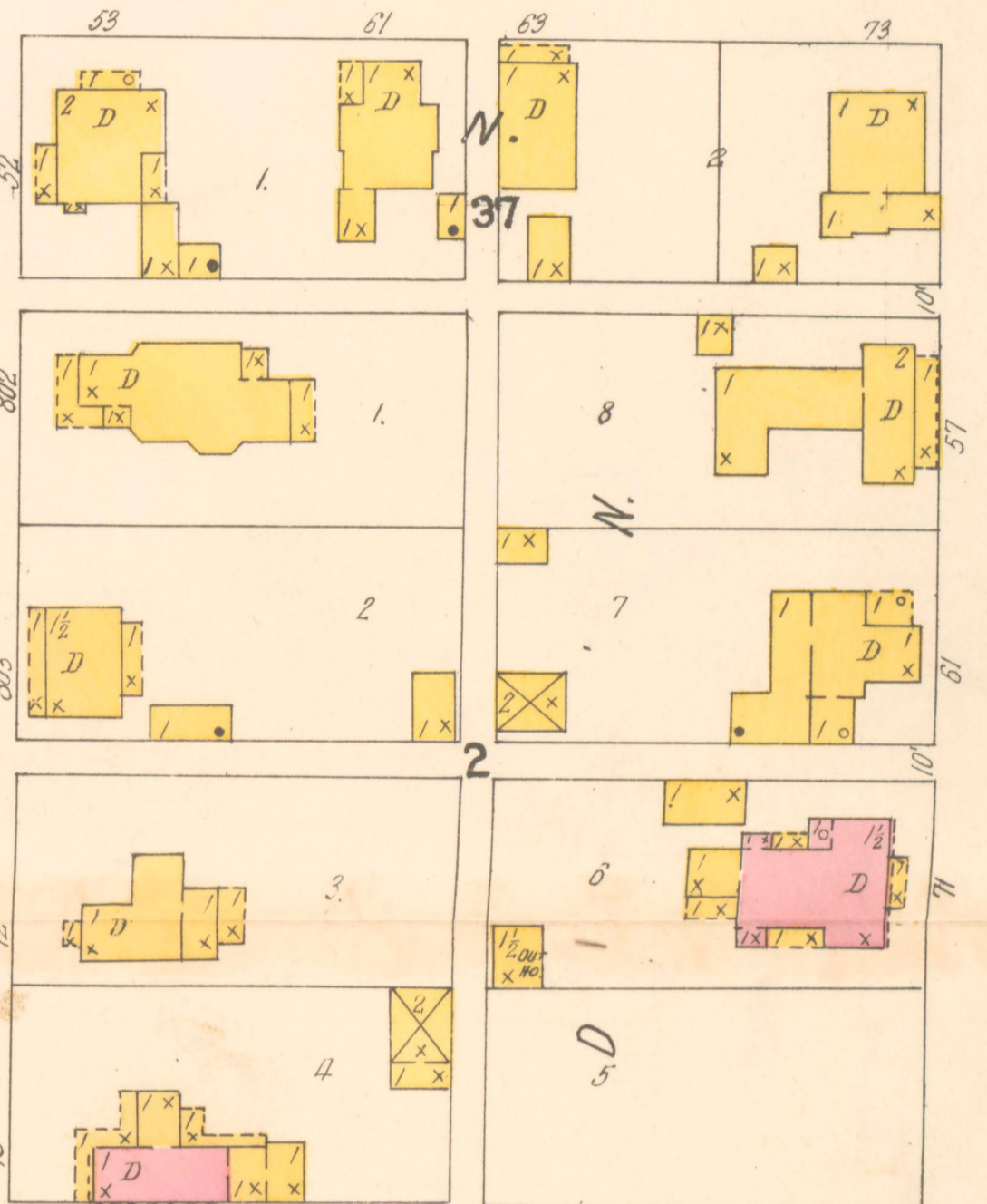
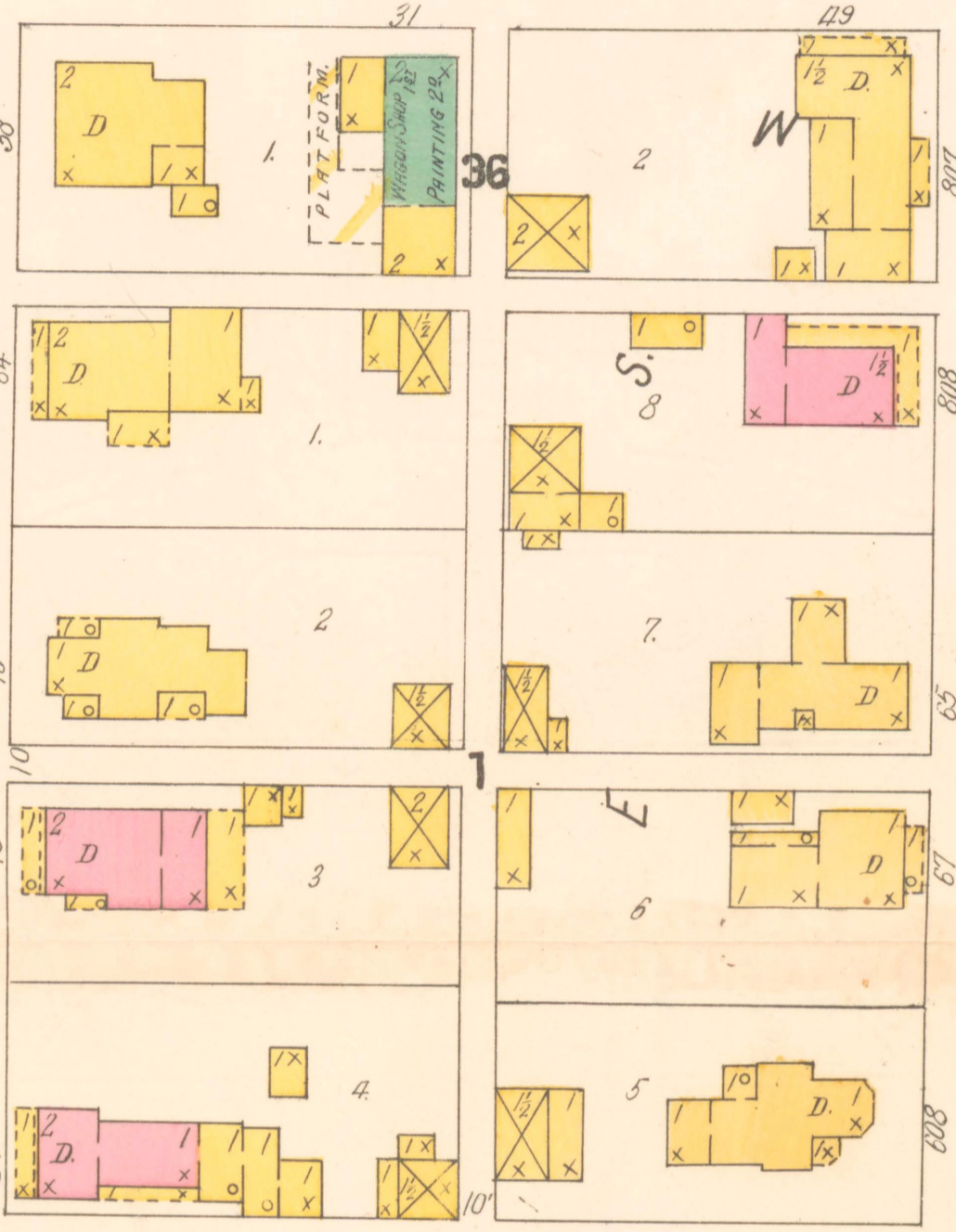
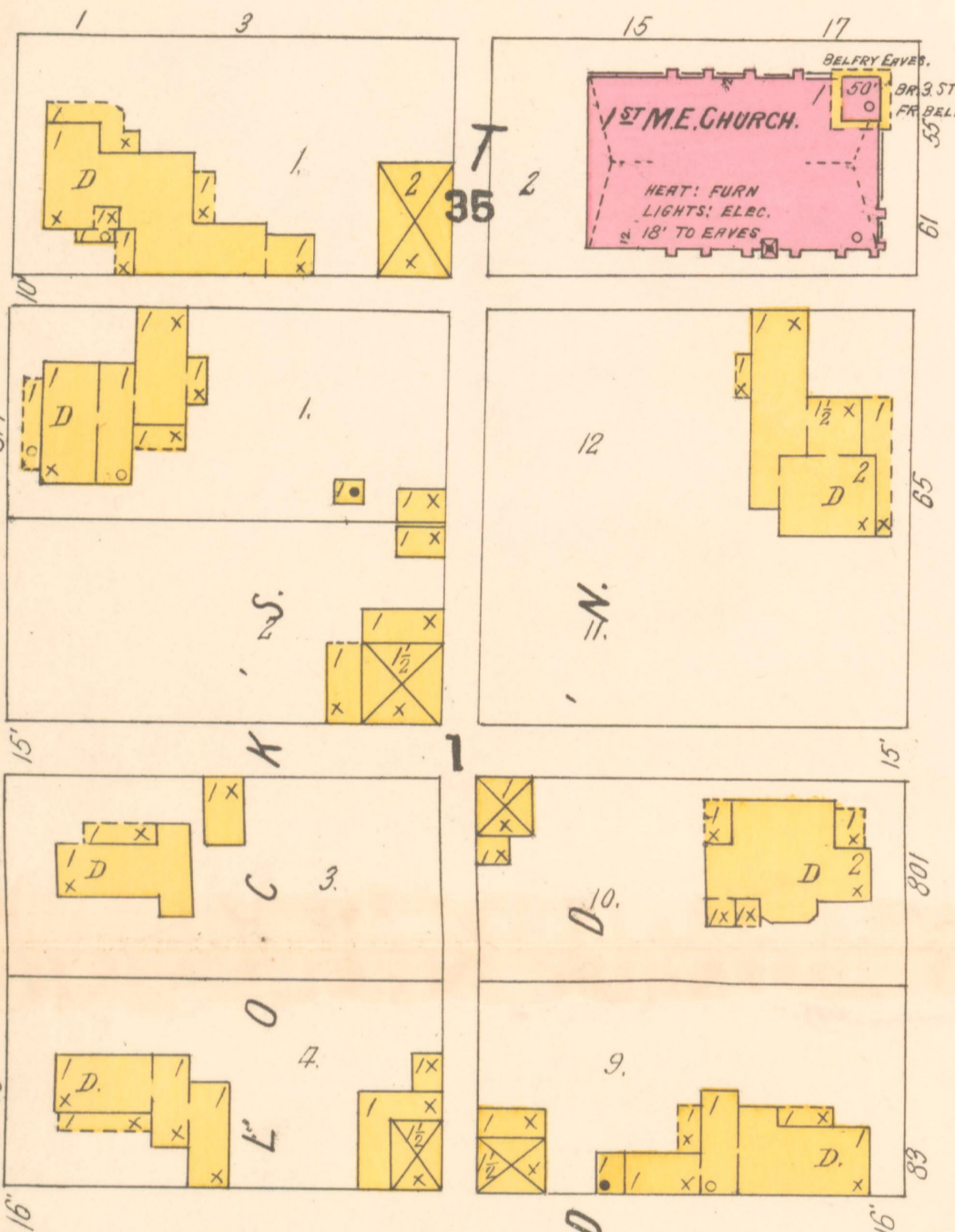
5

3 E. MARION

SANDERS HOTEL 2^o



E. SOUTH 3004



S. JEFFERSON

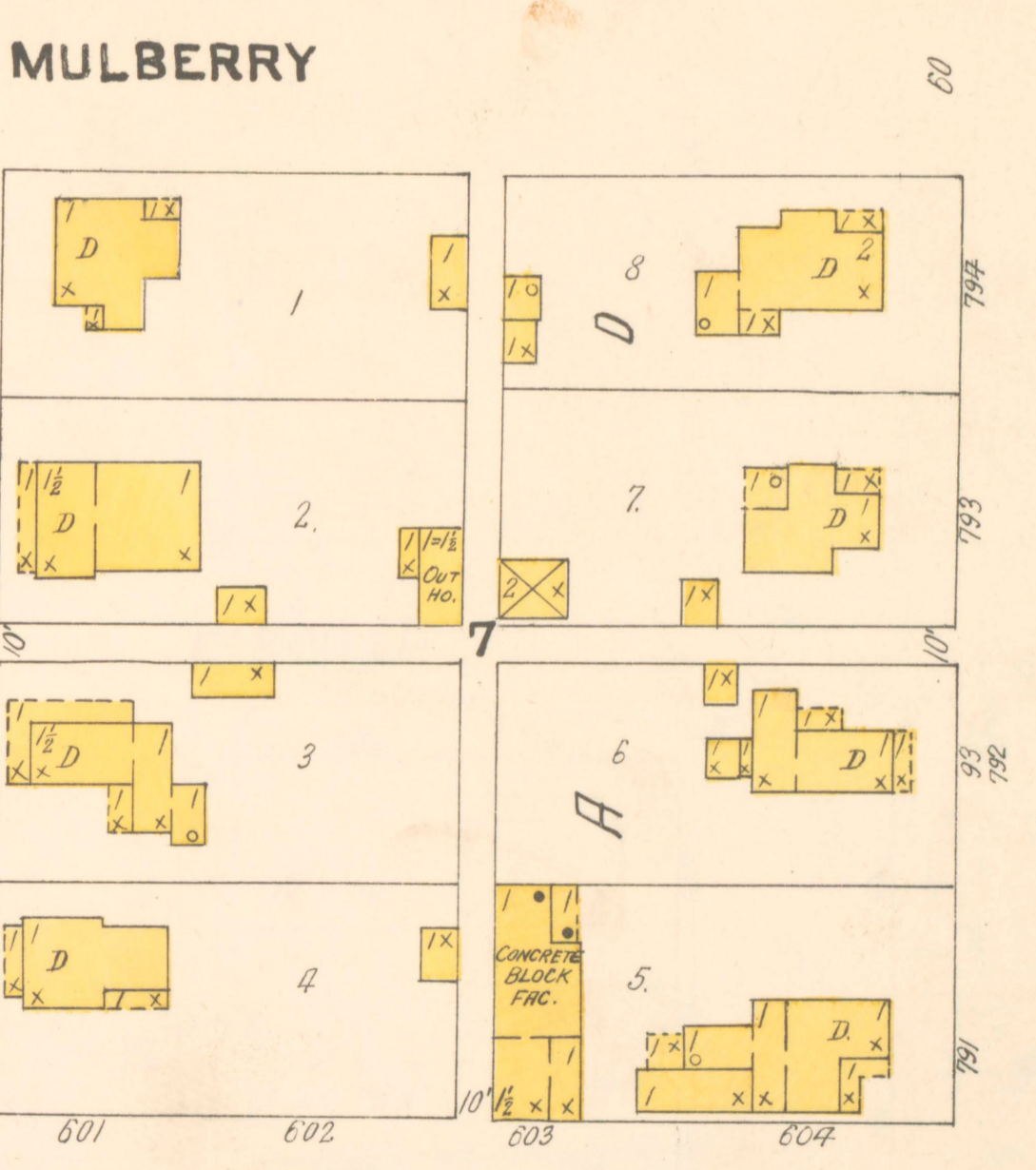
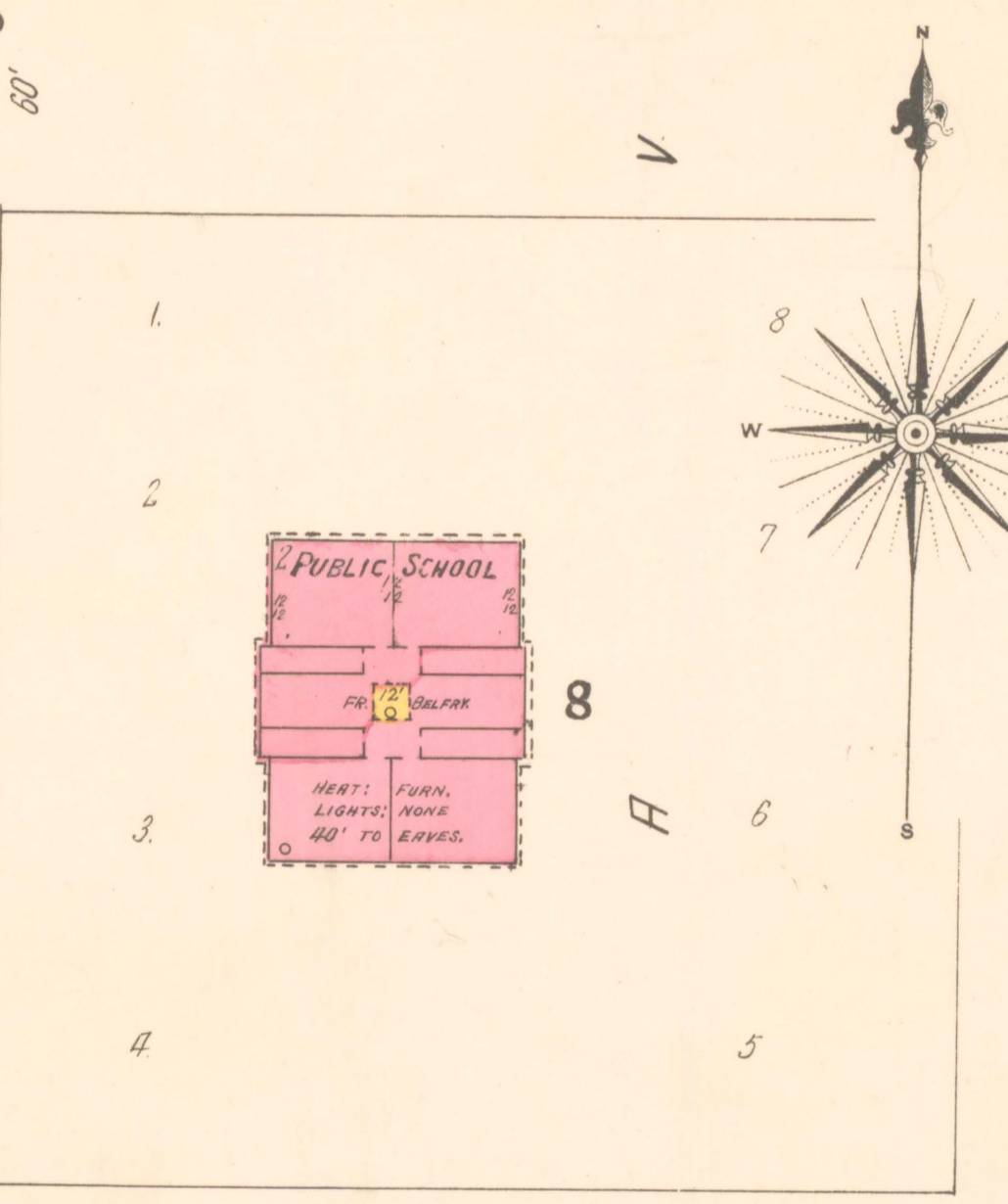
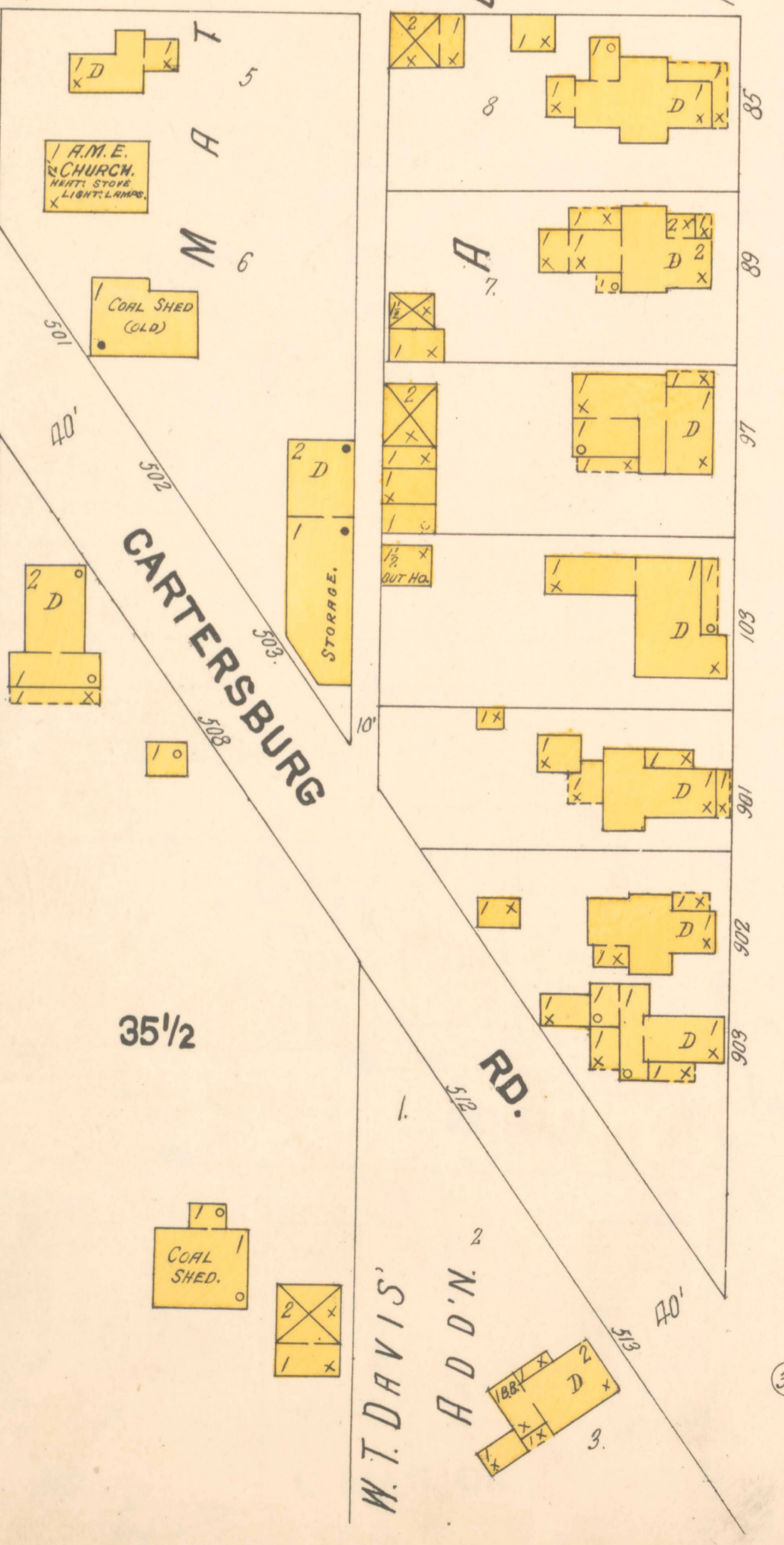
S. WASHINGTON

S. INDIANA

S. TENNESSEE

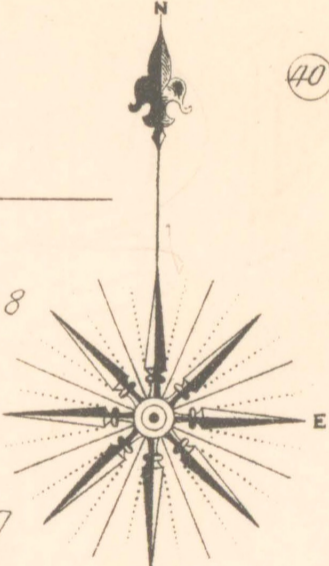
4

6



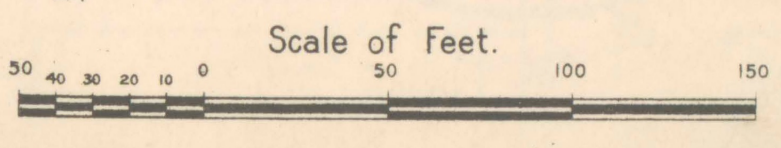
MULBERRY

E. MILL

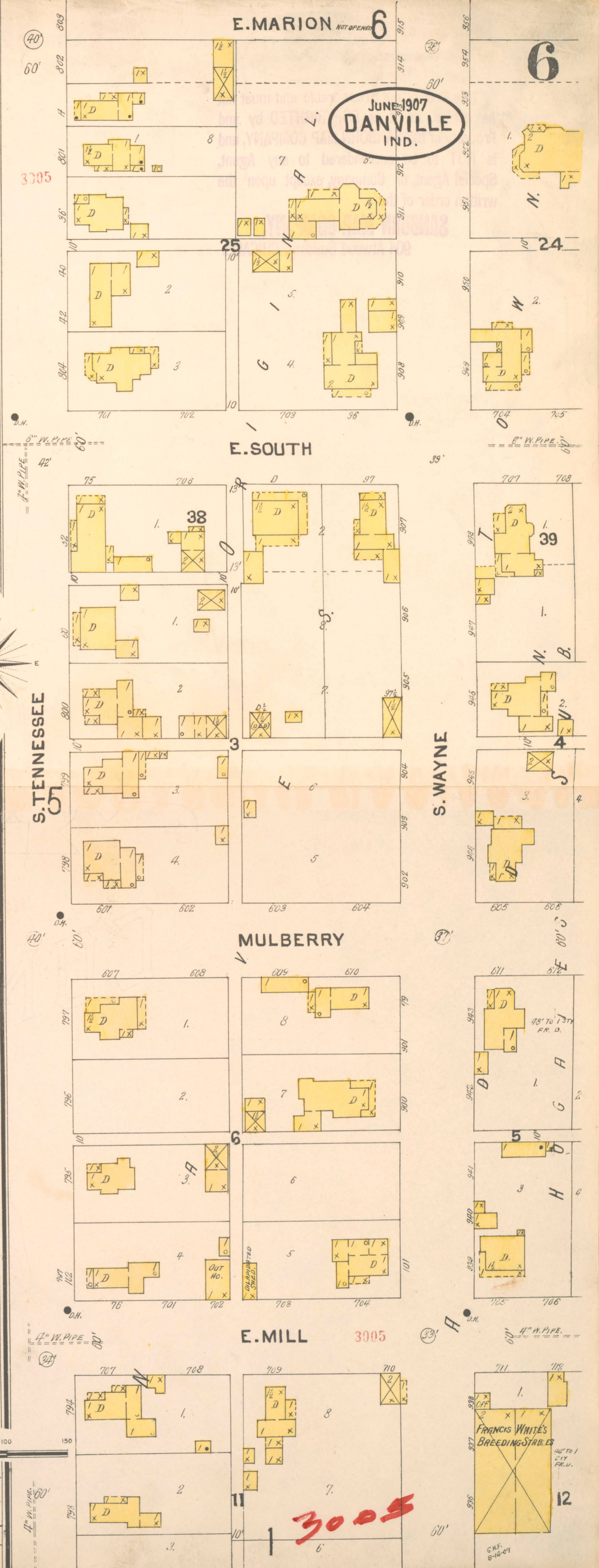


BASE BALL GROUNDS.

3004



G.H.F. 8-14-07



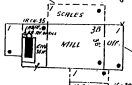
JULY 1907
PLAINFIELD
IND.



2

WASHINGTON
OR
MAIN

PLAINFIELD MILLS
ANDERSON & CUTLER PROP.
FOR INFO REFER TO
ADVERTISING - PAGE 101 - IN THE 1907-8 ST. DIR.
QUARTERS, 400 1/2 W. W. ST.
MILLS - 1000 1/2 W. W. ST.
MILLS - 1000 1/2 W. W. ST.
MILLS - 1000 1/2 W. W. ST.
MILLS - 1000 1/2 W. W. ST.
MILLS - 1000 1/2 W. W. ST.

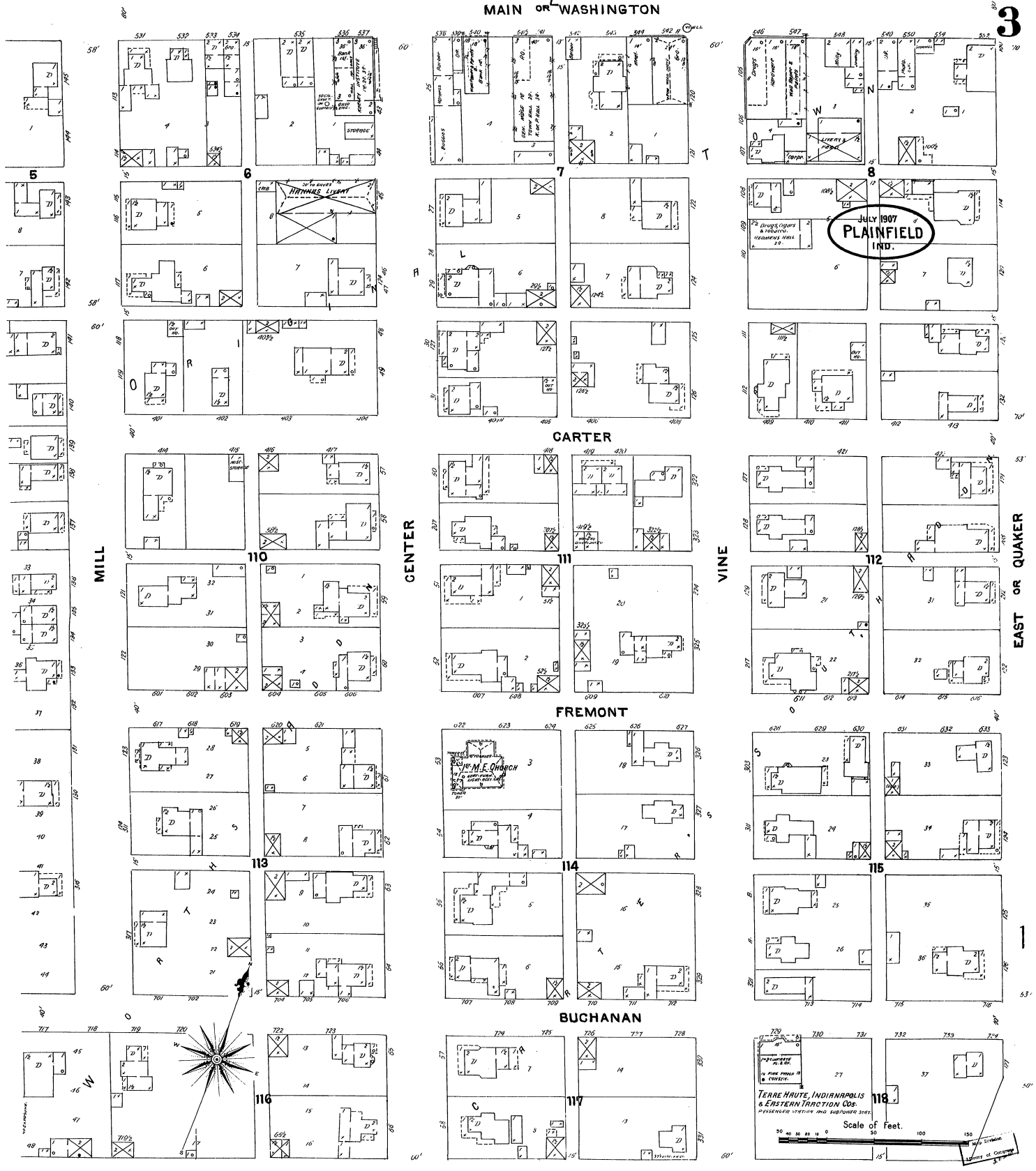


Scale of Feet.
50 100 150

Map Shows
Library of Congress

2
MAIN OR WASHINGTON

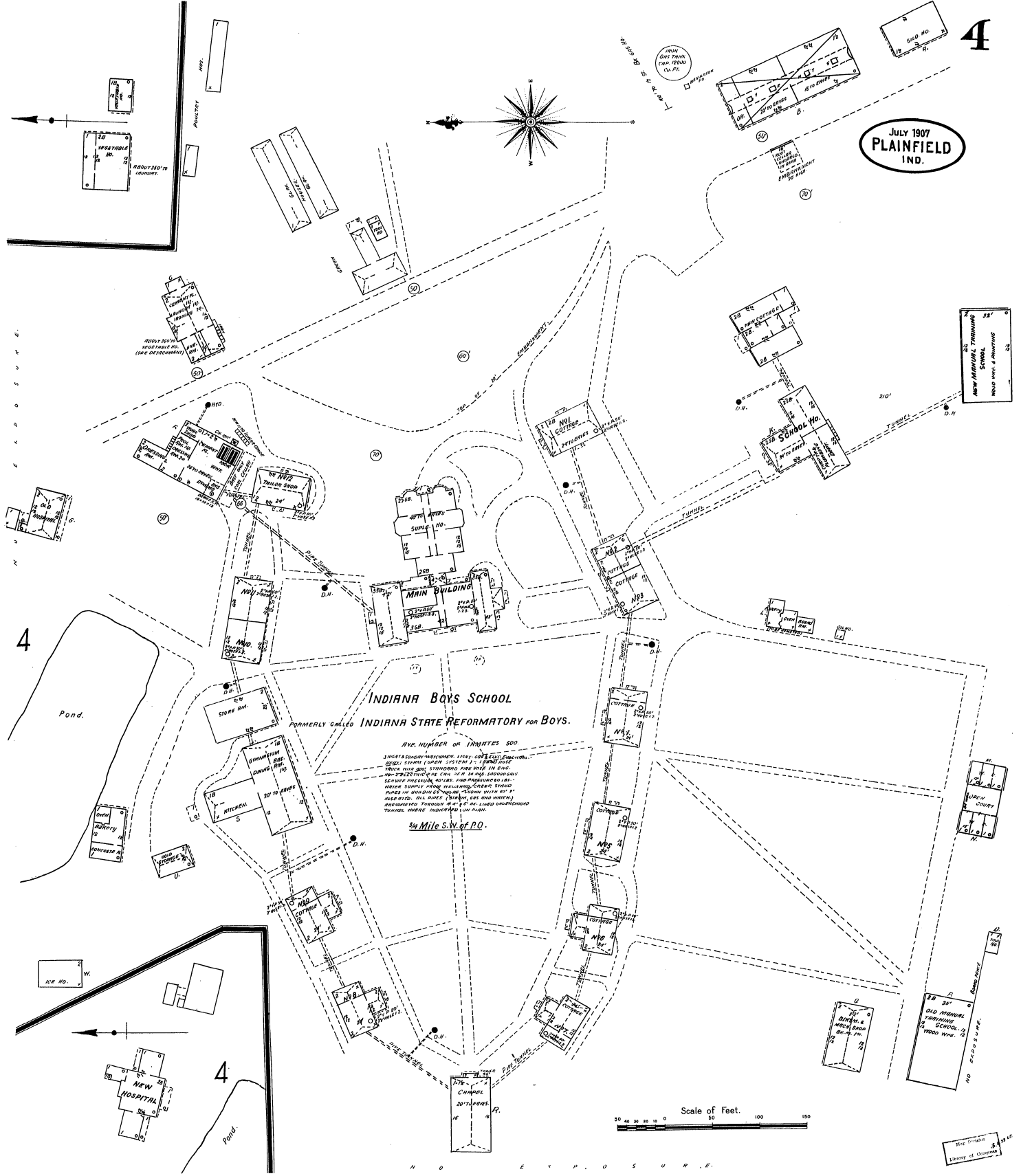
3

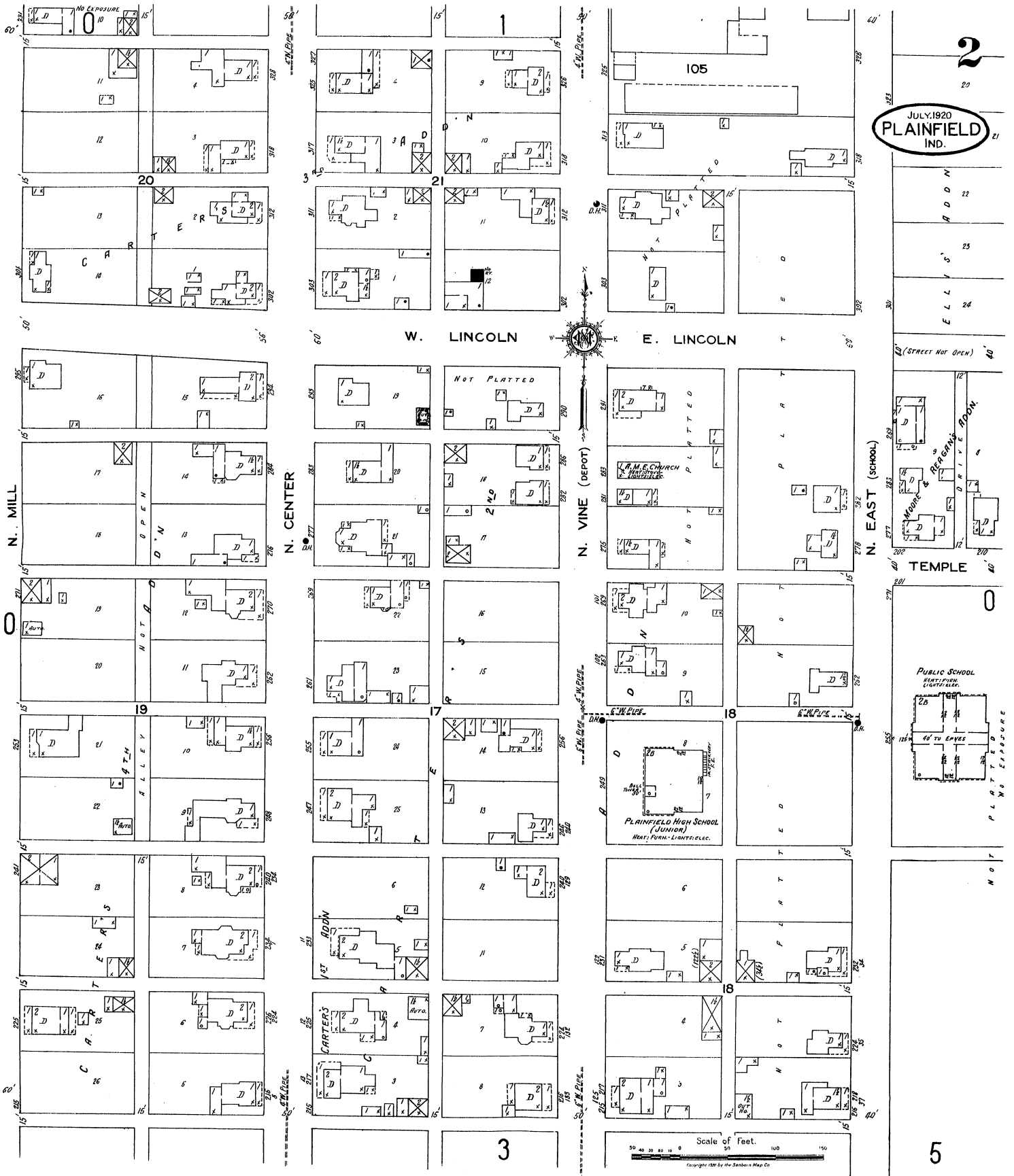


JULY 1907
PLAINFIELD
IND.

Scale of feet.
0 50 100 150
TERRE HAUTE, INDIANAPOLIS
& EASTERN TRACTION CO.
PRESERVE THIS MAP AND SUGGESTIONS.
LIMITS OF CORPUS

JULY 1907
PLAINFIELD
IND.





2
 20
 JULY 1920
PLAINFIELD
 IND.

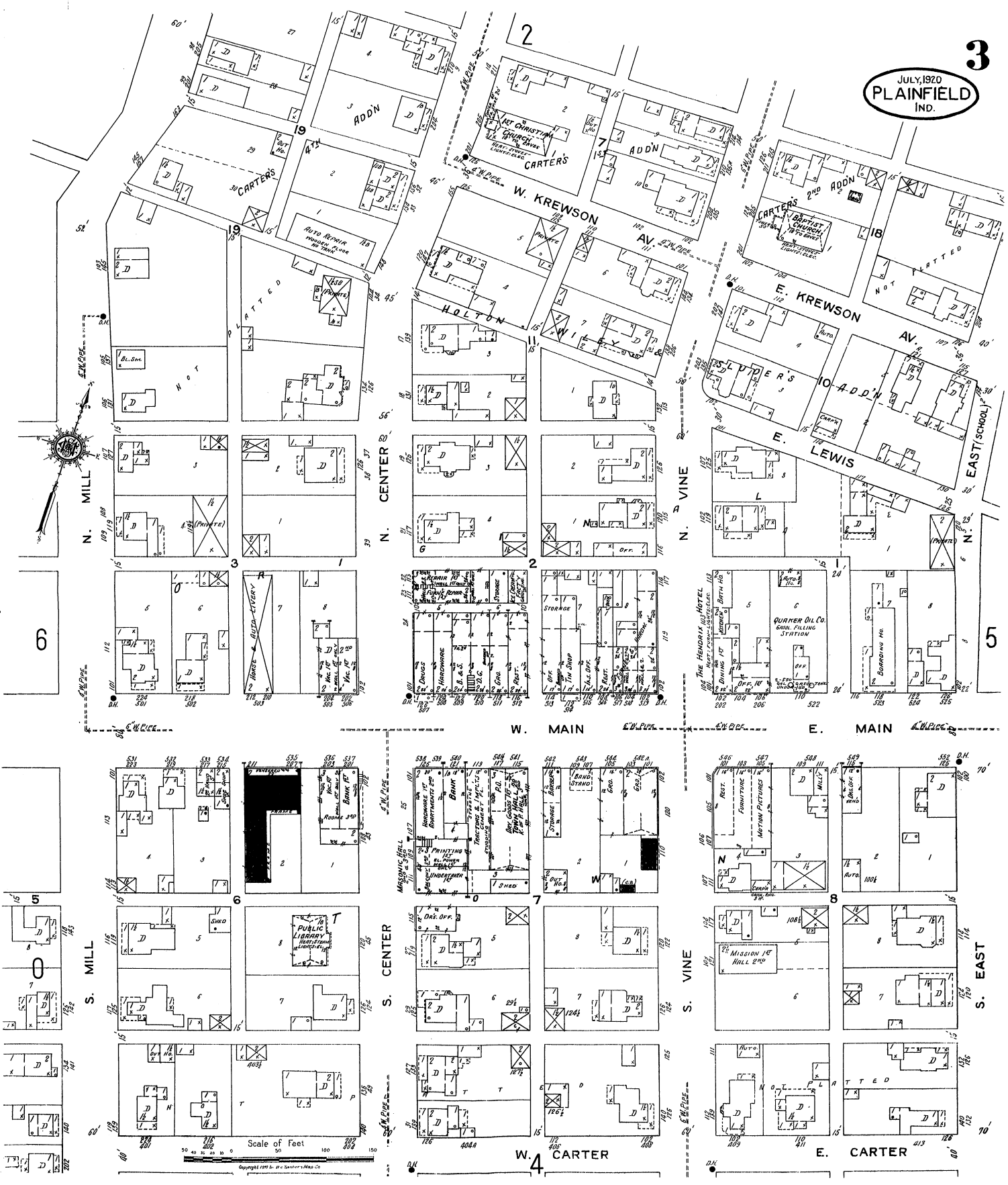
22
 25
 24
 E L L V S

(STREET NOT OPEN)
 40
 12
 11
 10
 9
 8
 7
 6
 5
 4
 3
 2
 1
 0
 1
 2
 3
 4
 5
 6
 7
 8
 9
 10
 11
 12
 13
 14
 15
 16
 17
 18
 19
 20
 21
 22
 23
 24
 25
 26

TEMPLE
 0
 PUBLIC SCHOOL
 HIGH SCHOOL
 LIGHTS, ELEC.
 40' TV EXPOSE
 15
 14
 13
 12
 11
 10
 9
 8
 7
 6
 5
 4
 3
 2
 1
 0
 1
 2
 3
 4
 5
 6
 7
 8
 9
 10
 11
 12
 13
 14
 15
 16
 17
 18
 19
 20
 21
 22
 23
 24
 25
 26

5
 NOT
 PLATTED
 NO EXPOSURE

Scale of Feet.
 50 100 150
 Copyright 1920 by the Sanborn Map Co.



N. MILL

N. CENTER

N. VINE

S. MILL

S. CENTER

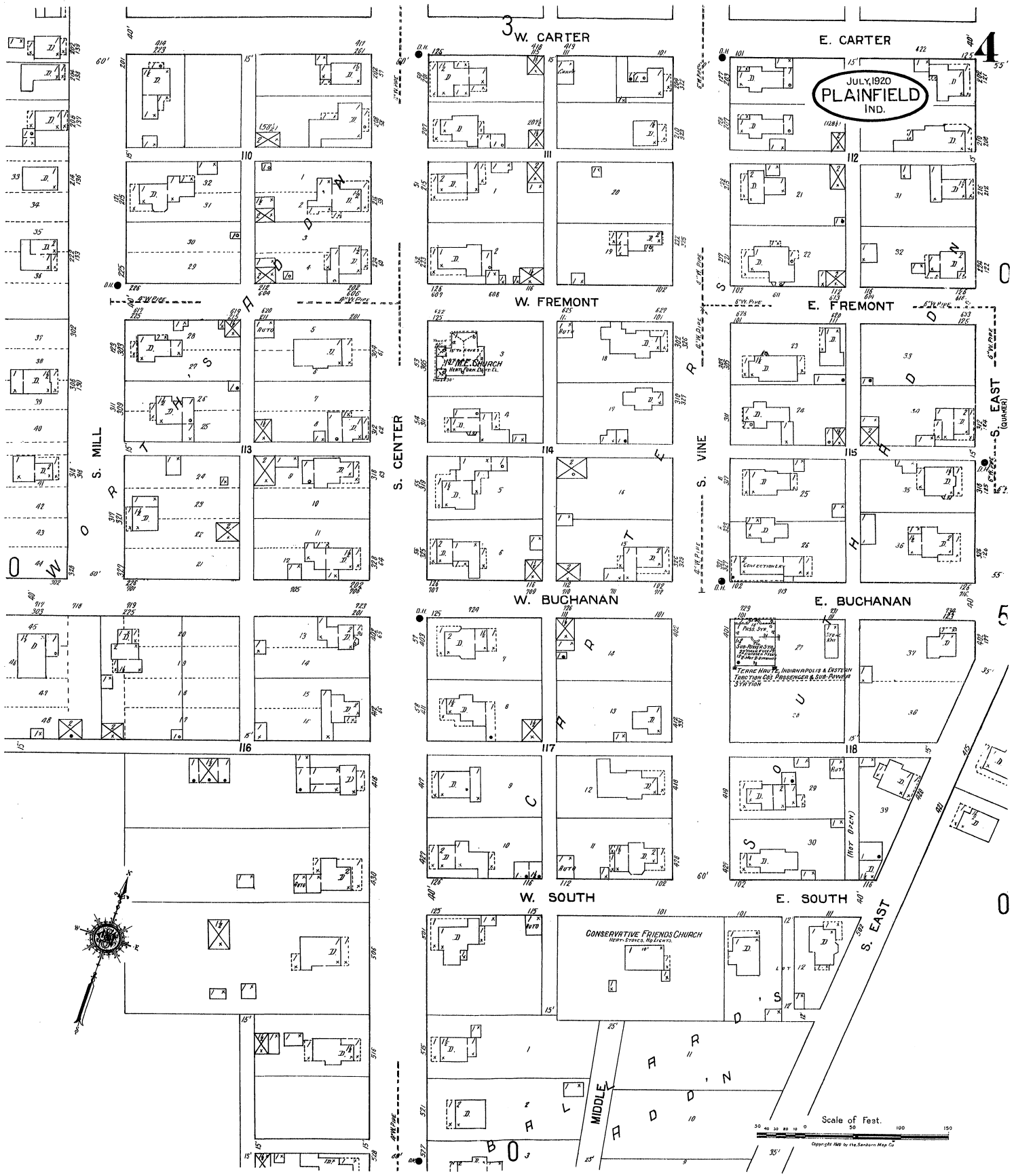
S. VINE

W. CARTER

E. CARTER

Scale of Feet
0 50 100 150

Copyright 1920 by J. P. Sanborn & Map Co.



JULY, 1920
PLAINFIELD
IND.

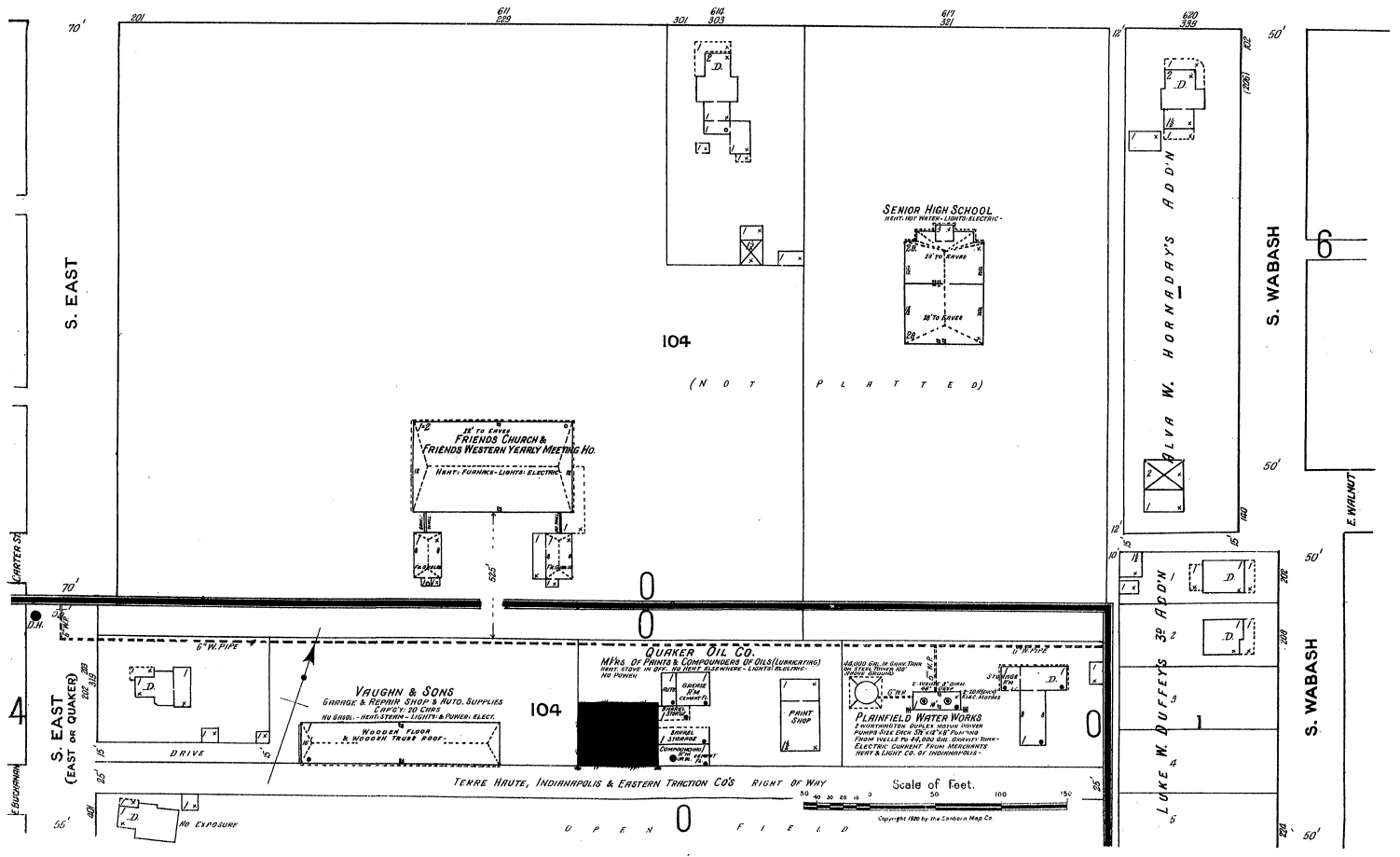
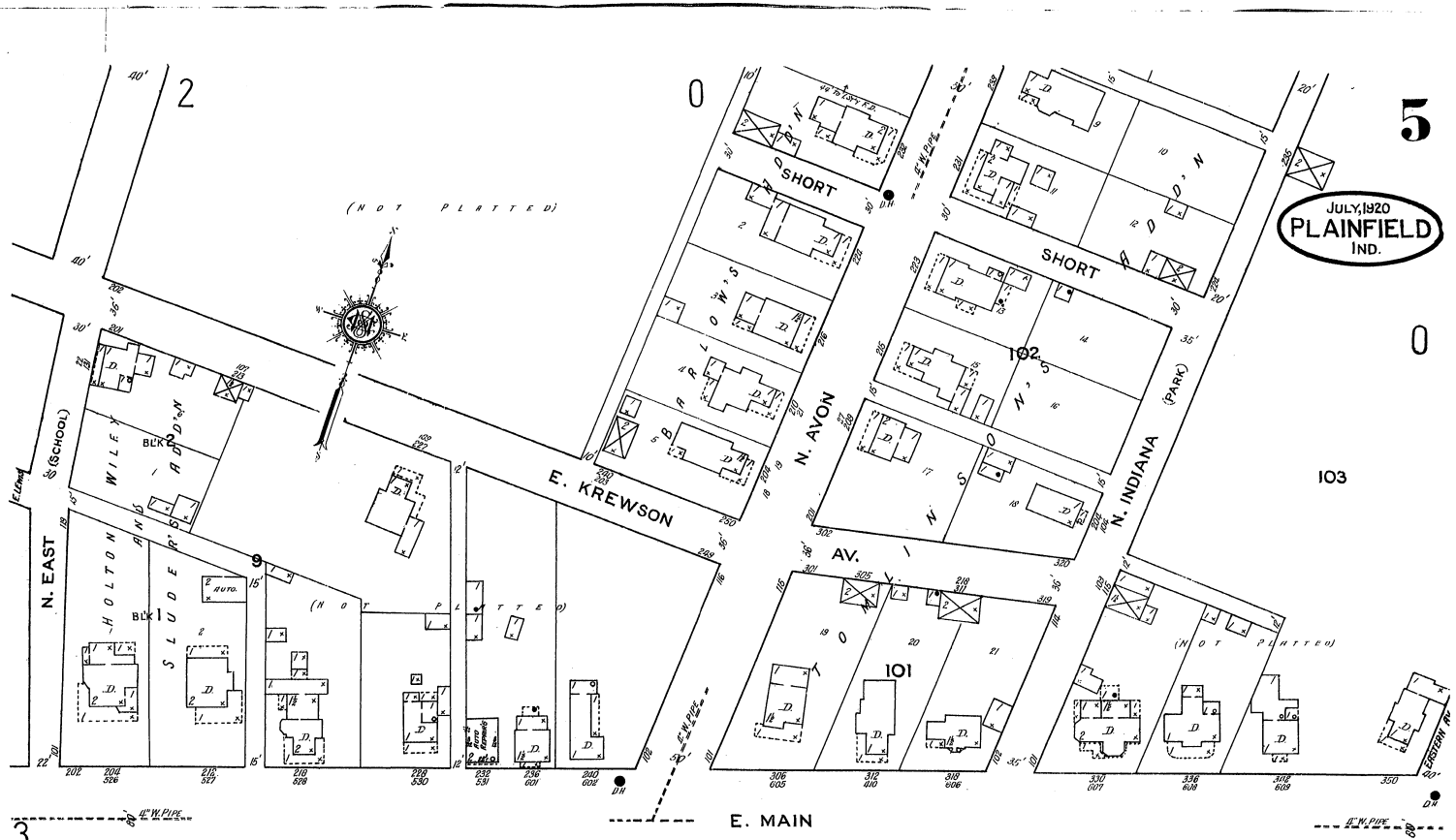
W. FLEMING CHURCH
W. FLEMING CHURCH

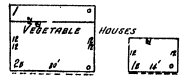
INDIANAPOLIS & EASTERN
TRUST CO. OF INDIANAPOLIS
INDIANAPOLIS & EASTERN
TRUST CO. OF INDIANAPOLIS
INDIANAPOLIS & EASTERN
TRUST CO. OF INDIANAPOLIS

CONSERVATIVE FRIENDS CHURCH
NEAR CORNER 100 S. EAST

Scale of Feet.
0 50 100 150
Copyright 1920 by the Sanborn Map Co.

JULY, 1920
PLAINFIELD
IND.





7

JULY, 1920
PLAINFIELD
IND.

