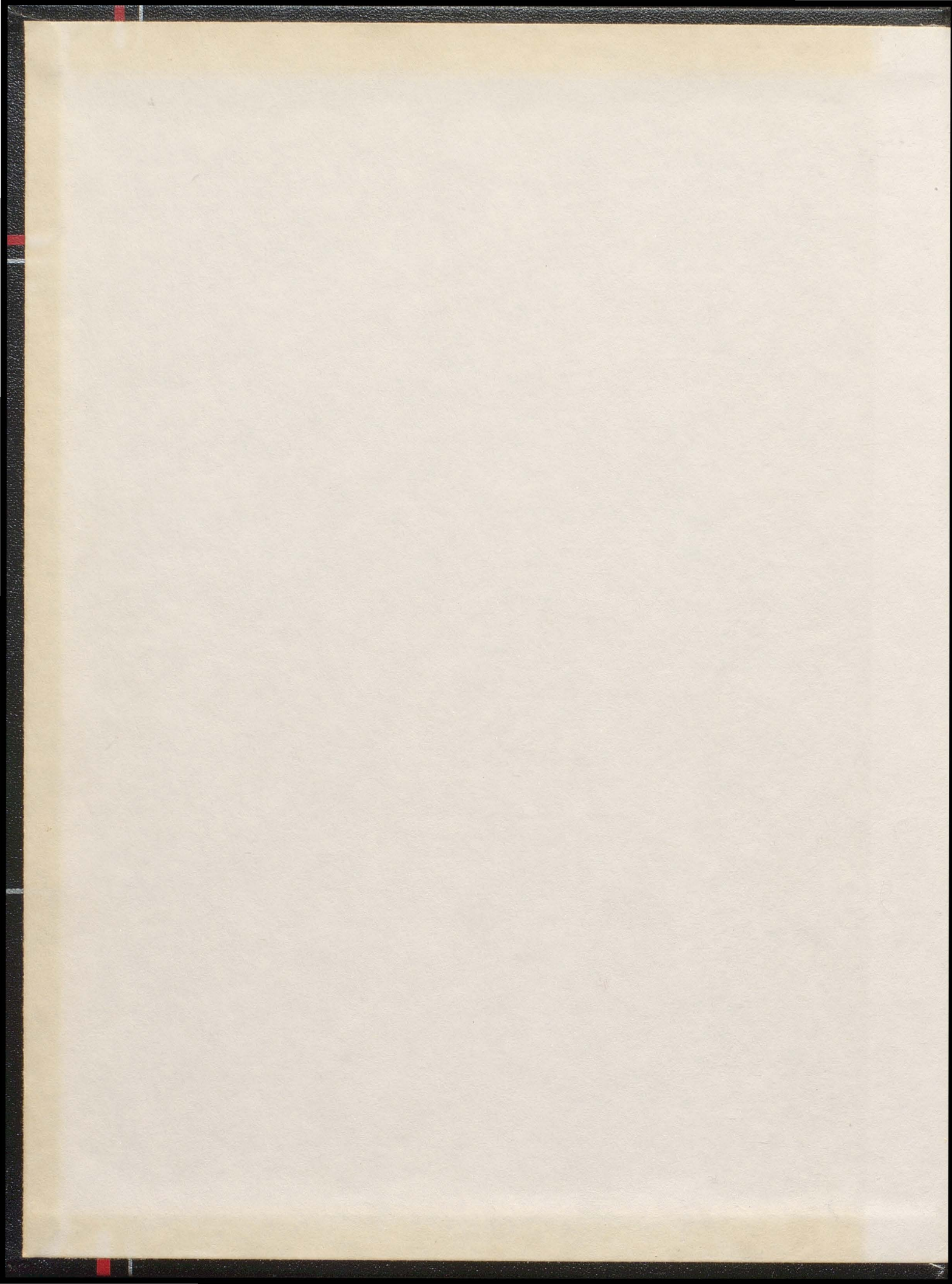


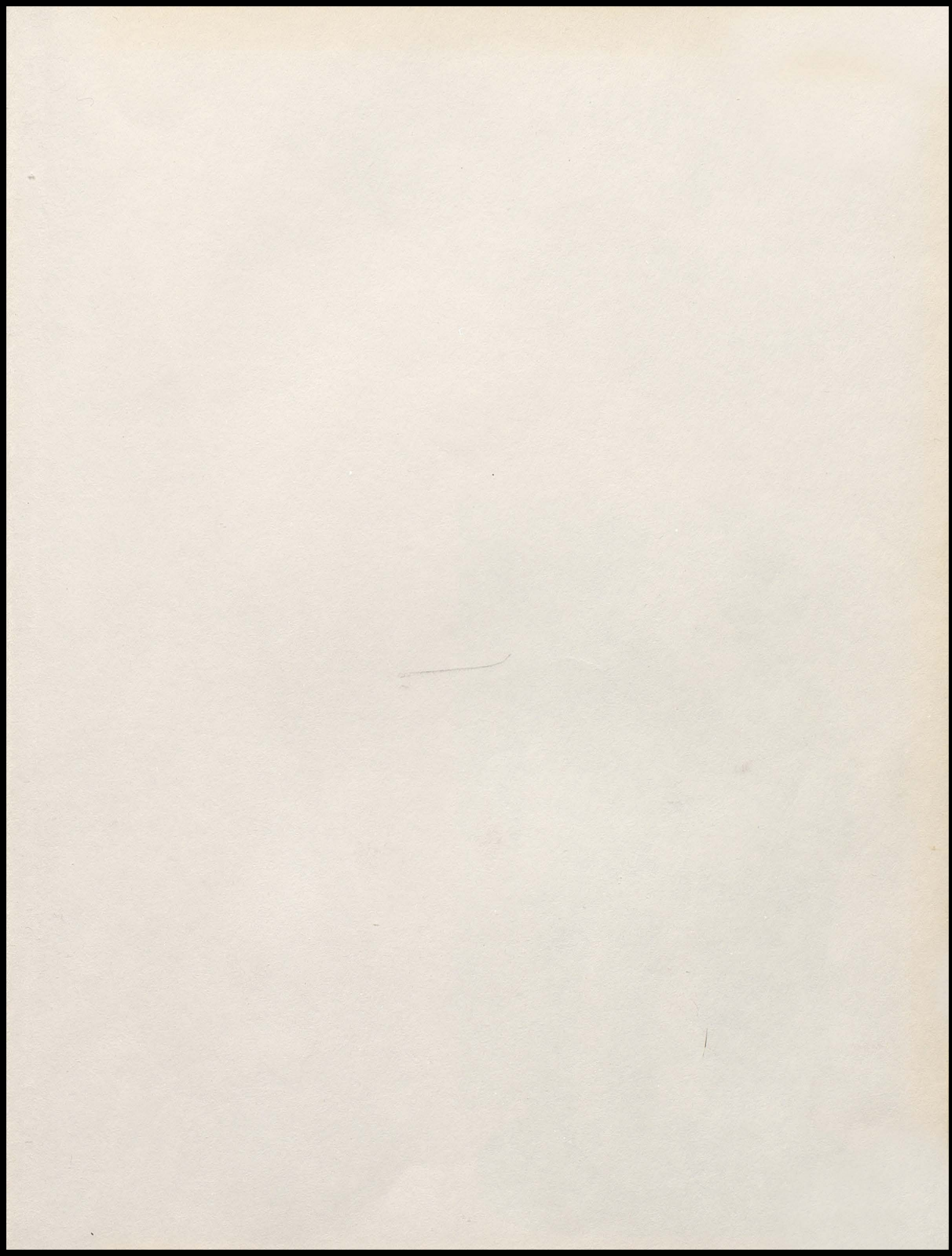
# *Silhouettes*

59

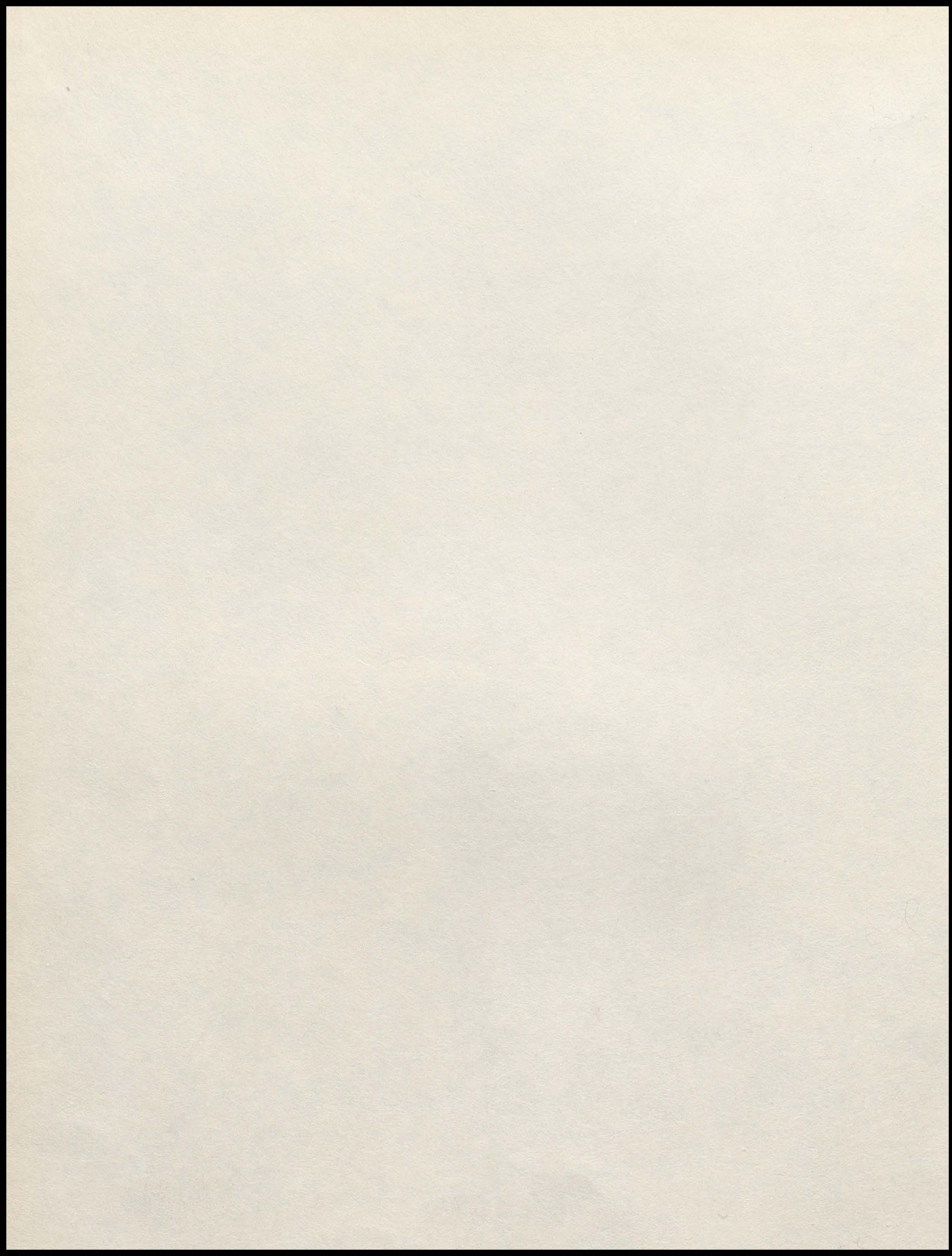














*Silhouettes  
of  
1959*

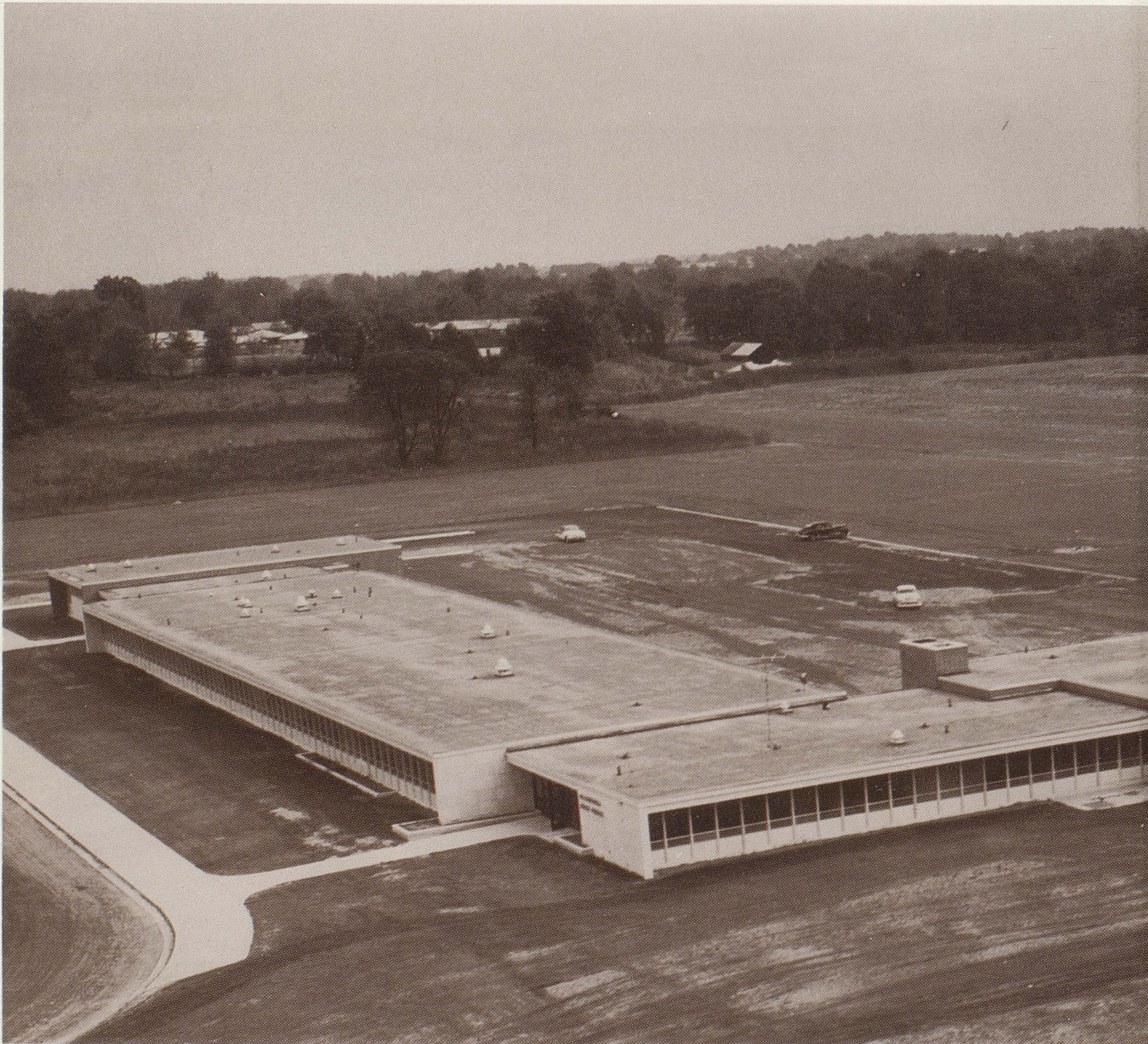
*Vol. V*



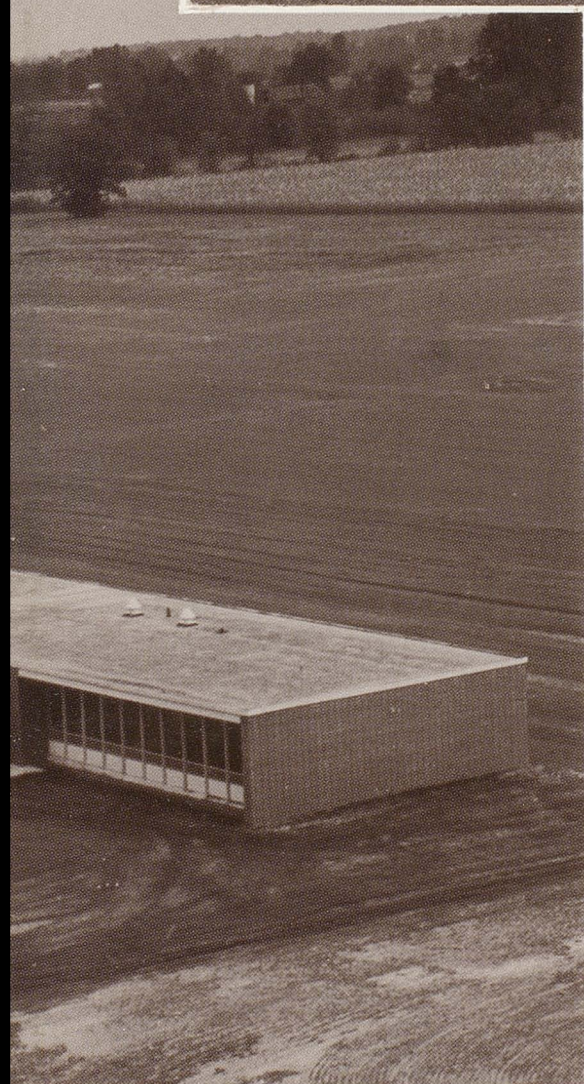
*Plainfield High School  
Plainfield, Indiana*



*With an eye to the future,  
we proudly view our new school!*







The year 1958-59 saw a great many changes at P.H.S. Sophomores, juniors and seniors, the top three grades, were moved from the "old" high school, on Main Street, which many of us had attended since the seventh grade, to a brand-new Senior High School on Stafford Road. Although our new location seemed to be far removed from town, we soon became accustomed to long walks and car pools.

The thought that P.H.S. will expand and grow even more in the future so that the generations to follow will have a beautiful and functional building in which to receive their high school education offset the nostalgia felt by many at leaving of the former school.



Hello!

This was a year of changes at P. H. S. In spite of a few inconveniences due to the newness of our school and some nostalgic memories of the building now the junior high school, we found entering a brand-new high school exciting and different.

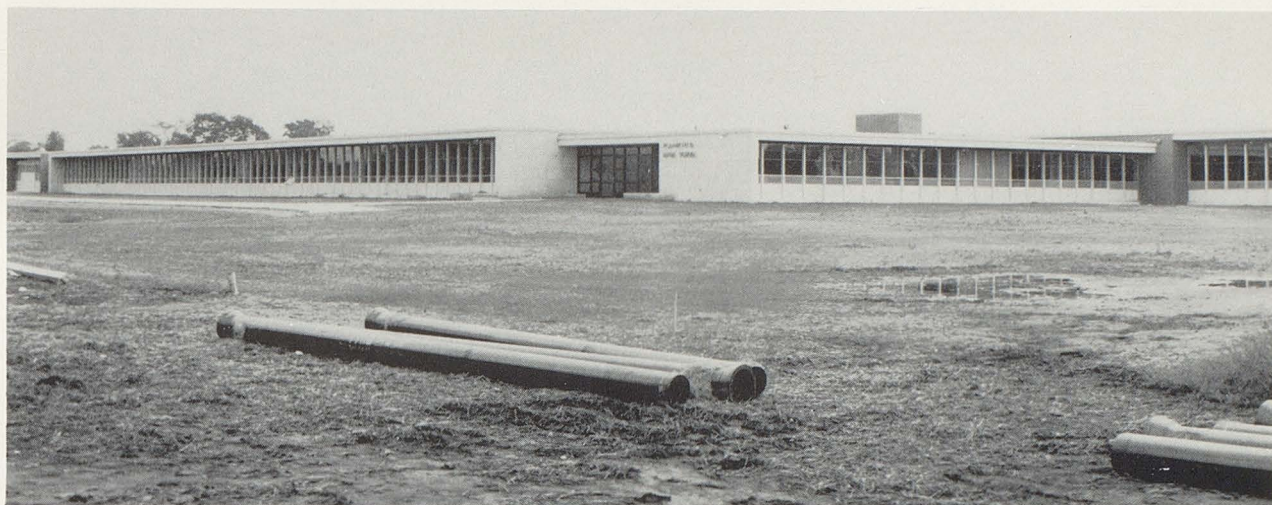
Here's a line to give you the details . . . . .

#### TABLE OF CONTENTS

Administration and Faculty	14
Seniors	18
Juniors	30
Sophomores	35
Organizations	40
Student Life	60
Sports	74
Index	92



## *Our plans became realities . . .*



Before landscaping and students, our building seemed bare and unfriendly.....



but as we registered on the first day, we saw the building's true potentialities.



*on the first days of investigating . . .*





*our new high school building!*

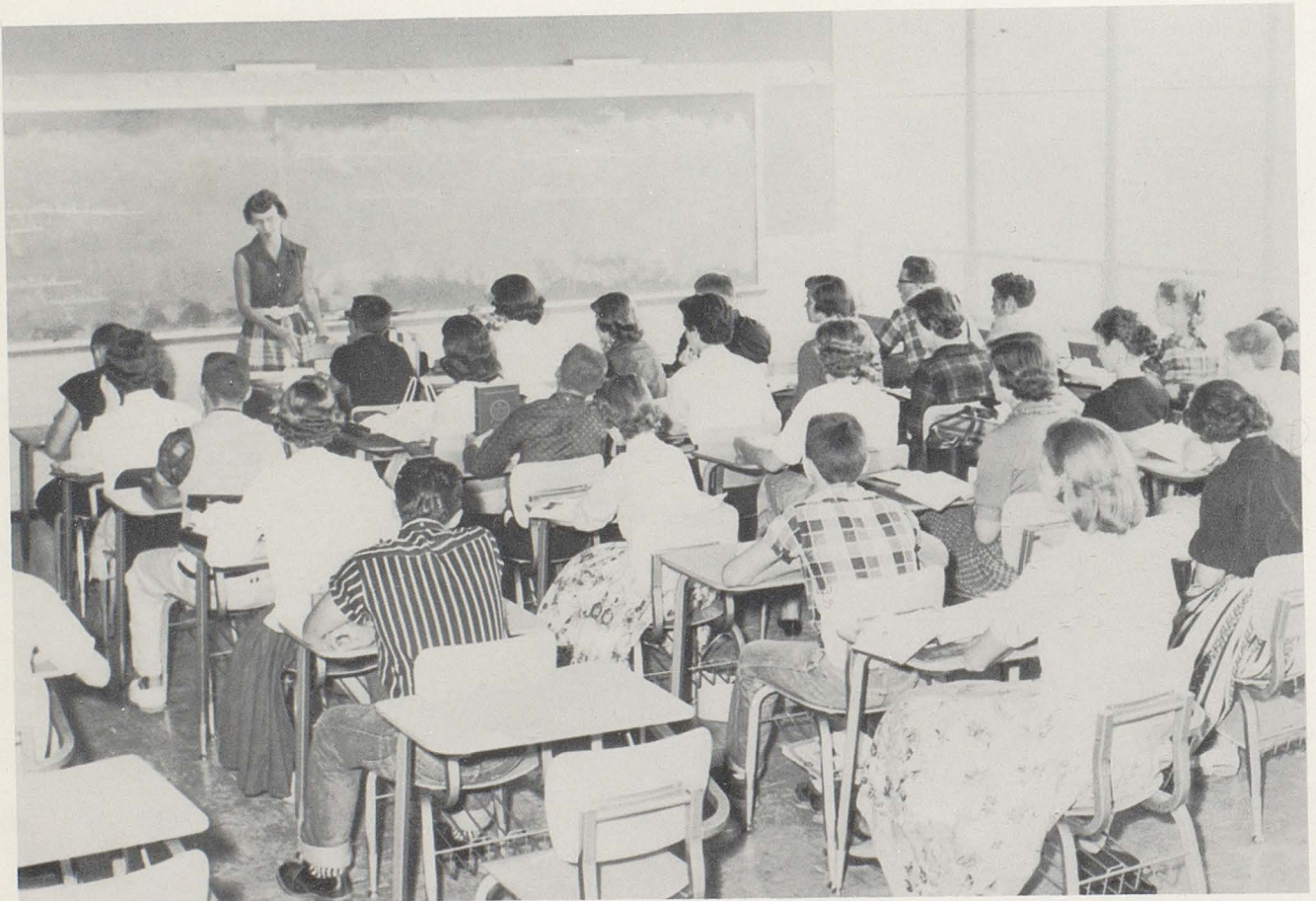




## *Classes were interesting . . .*



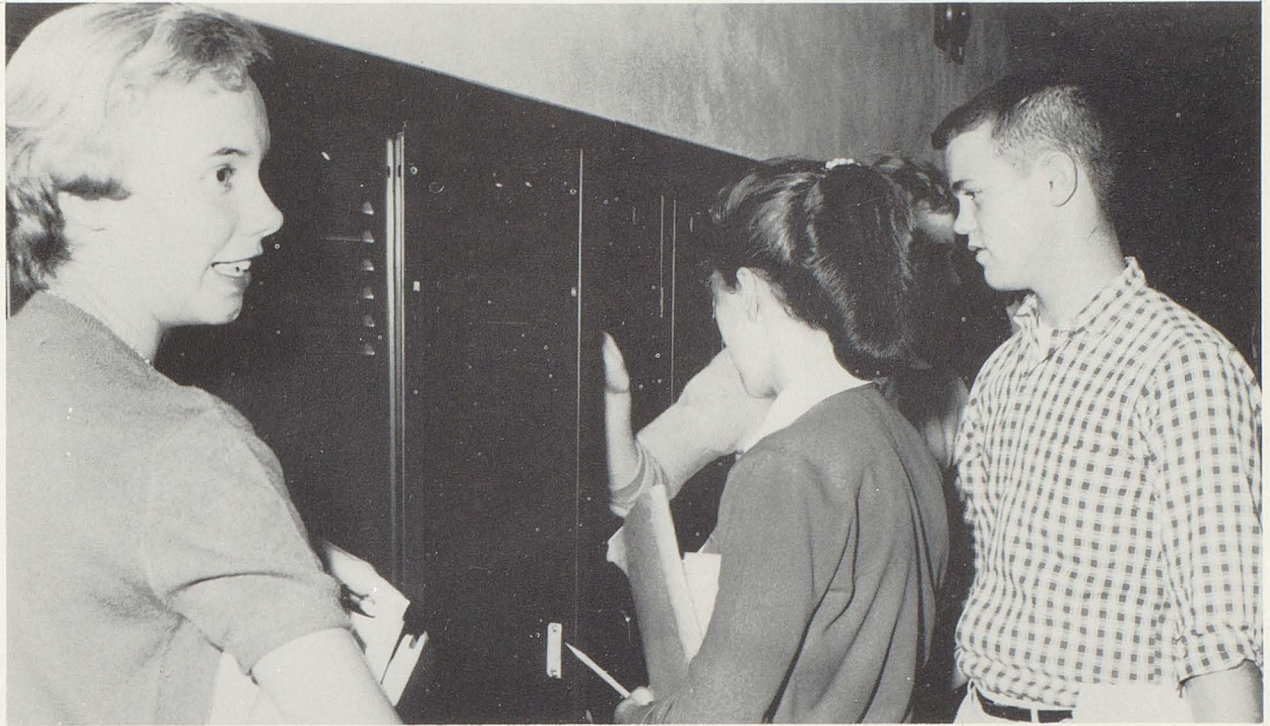
The speech room sported a new stage. Since this was the first year for a stage, students at first suffered from altitude sickness and stage fright, but they soon became accustomed to the change.



Our classrooms were better-lighted, more spacious, and, we found, more adaptable to our needs. The crowded, uncomfortable classes of just a year ago became mere memories.



## *but we found time for friendships*



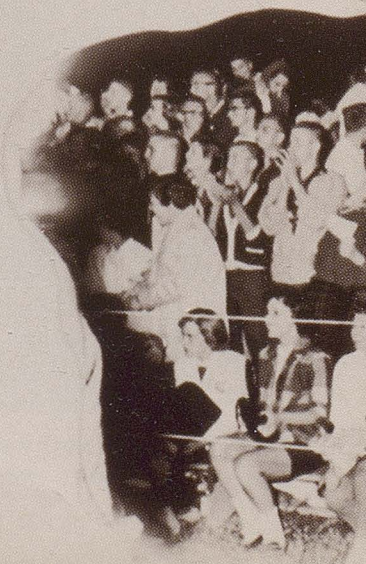
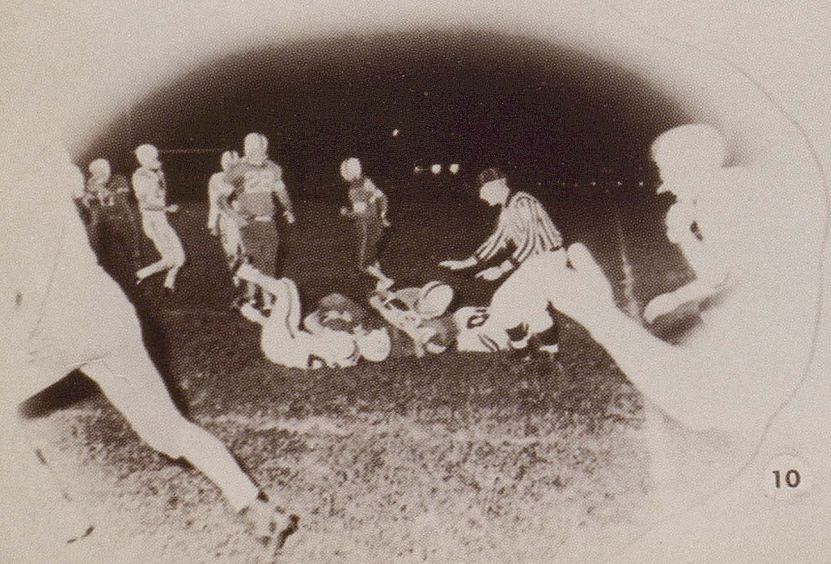
In the five minutes between classes, lockers became the center for conversations, romances, snacks, and preparations for the next class.



On the first day of school, what with so many curious students, it was difficult to find a moment of privacy-even in the faculty lounge.

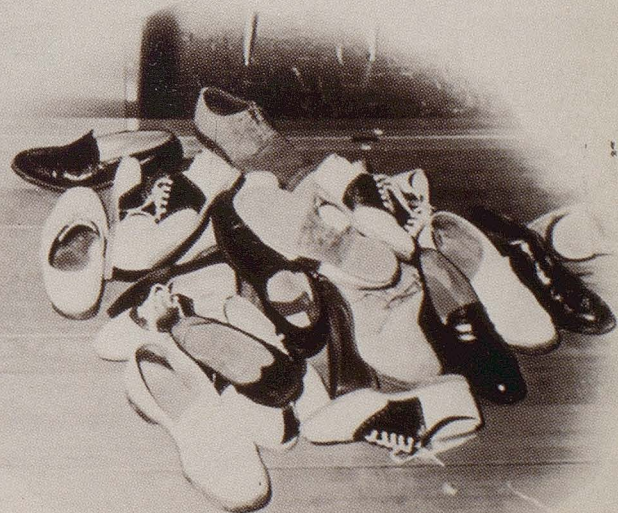
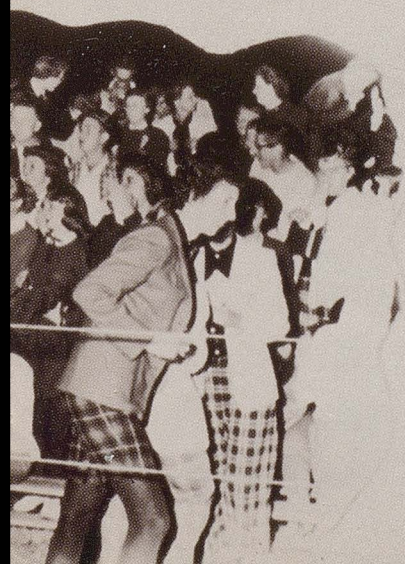


*Remember the first dances and parties . . .*





*the excitement of boosting the team . . .*





# the thrill of wearing senior cards . . .



Don, Mike, Kirk, and Jack seem unaware of their predicament.



Every year new styles appear at P.H.S. say our fashion authorities, Beth, Lynda, Andy, and Kathy.



*and, oh, how we missed the greenies!*



*However, the fact that we now had only three grades was soon over-looked in the hustle of high school activities.*

*In the following pages we present our record of the year 1959 at P. H. S. It was a year to remember. Kathy, Nancy, and the gang*





BILLY L. ABEL, Principal

## *Our administration*



SCHOOL BOARD MEMBERS: Mr. Delbert Hobson, Mr. Willard Jordan, President, Lowell Morgan; Superintendent, Frank Ross; Trustee, Paul Kellum; and Board Member, Albert Jessup.



*and faculty members*



IVAN ALBRIGHT  
Central Normal B. S.  
Social Studies  
Coaching  
Co-Sponsor: Sophomore Class



CAROLYN BARNES  
Butler B. S. - Commercial  
Co-Sponsor: Junior Class



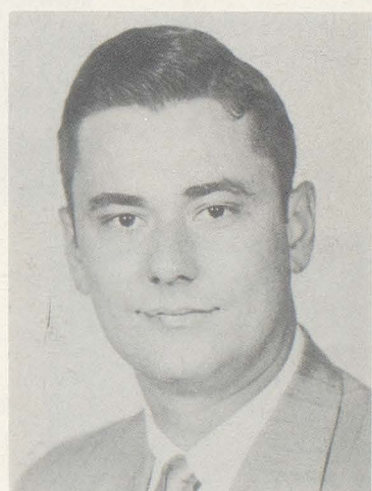
RUTH CRAIG  
Earlham A. B. - English  
Sponsor: Junior Class



HAROLD GROSSKREUTZ  
Wisconsin State B. E.  
Voc. Agriculture, Chemistry,  
Shop, Sponsor: F. F. A.,  
Co-Sponsor: Science Club,  
Sophomore Class



MELBA HAINES  
Illinois B. S.  
English, Sponsor: Senior  
Class, Student Council



ERNEST HOLMES  
Ball State Teachers  
College B. S.  
Industrial Arts



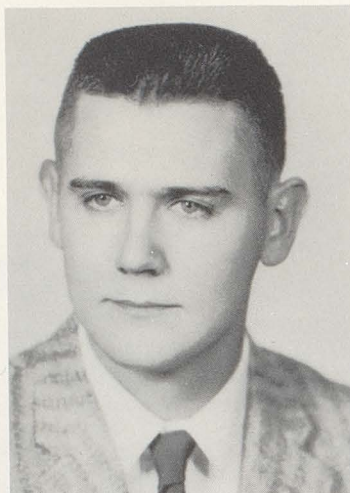


WILLIAM LANTZ  
Ball State Teachers  
College B. S.  
Art



LELAND LEMME  
Oakland City B. S.  
Butler M. S.  
Science  
Sponsor: Science Club

CHESTER LITTLEJOHN  
Arthur Jordan  
Conservatory  
B. M. -Ed.  
Band  
Sponsor: Pep Band



JACK LIVINGSTON  
Indiana State Teachers  
College B. S.  
History  
Commercial  
Co-Sponsor: Sophomore  
Class

MADGE MASTEN  
Purdue B. S.  
Indiana M. S.  
Math  
Sponsor: Honor Society  
Future Teachers



RICHARD METCALF  
Jordan College B. M.  
M. E.  
Vocal Music  
Sponsor: Ensemble

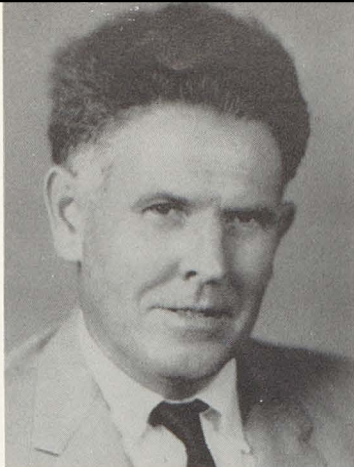


RUTH NEWLIN  
Earlam A. B.  
Latin  
English  
Sponsor: Junior Classical  
League

BETTY NILES  
Indiana State Teachers  
College B. S.  
English  
Speech  
Sponsor: Quaker Shaker,  
Silhouettes, Plays  
Co-Sponsor: Sophomore  
Class





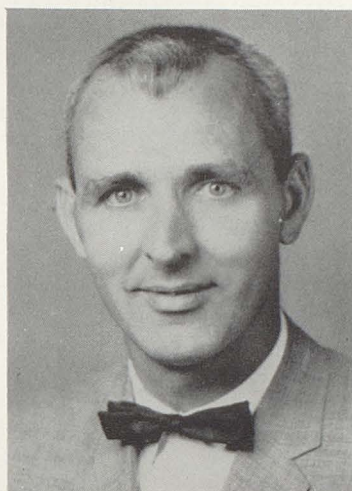


HOWARD PIKE  
Indiana State B. S.  
Commerce

BERYL JESSUP  
Butler B. S. - Ed.  
English  
Co-Sponsor: Junior Class

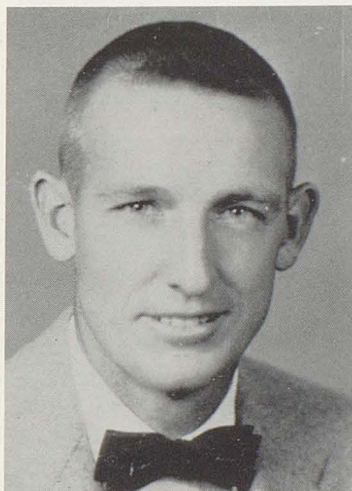


QUENTIN SHORE  
Purdue B. S.  
Butler M. S.  
Drivers Education  
Assistant Principal



JANE SNIDER  
Ball State Teachers  
College B. S.  
Physical Education  
Health/Safety  
Sponsor: G.A.A., Pep  
Club, Cheerblock

PATRICIA SPIELMAN  
Indiana University B. S.  
English  
Spanish



HEROD TOON  
Butler B. S.  
Health/Safety  
Physical Education  
Drivers Education  
Sponsor: Basketball Team  
Co-Sponsor: Sophomore  
Class



MABEL TRUAX  
Purdue B. S. - H. E.  
Home Economics  
Sponsor: F. H. A.  
Co-Sponsor: Senior Class

ESTER COPELAND  
School Secretary









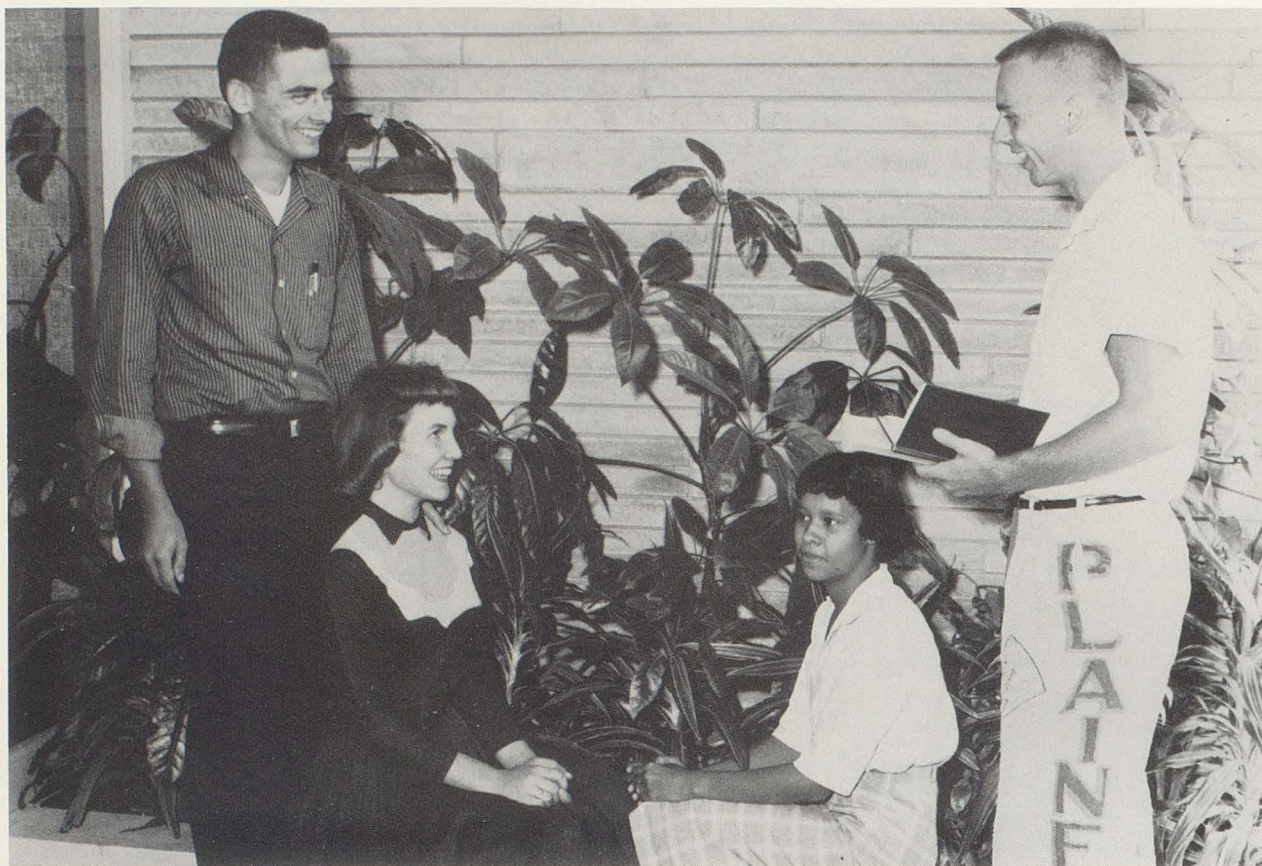
# Classes

The fact that P.H.S. in '59 has only the three upper classes has not divided the student body, rather it has united it. However, in their minds at least, seniors still run the school for the underclassmen.

This haughty attitude typical of seniors is expressed by Kirk Holdcroft at the bungling efforts of underclassmen (such as sophomore, Pam Johnson and junior, Richard Swarn), who attempt such menial jobs as cleaning out their lockers.



## Senior Class History



SENIOR CLASS OFFICERS ARE (LEFT TO RIGHT) David Whited, vice-president; Nan Getchell, treasurer; Judy Powell, secretary; Don Sharer, president.

Over one-hundred members of the Senior Class of 1959 entered the doors of a new high school building to begin their last year. Faithful to tradition, all seniors wore painted senior cords. Mr. Melba Haines and her assistants, Mrs. Masten and Mr. Truax, were the sponsors.

The class officers for the final year shown above proved to be as successful as selections made in previous years.

Officers for the junior year were Don Sharer, president; Joe Baldwin, vice-president; Sandy Klingensmith, secretary; and Nan Getchell, treasurer.

Officers during the sophomore year were Ronnie Richardson, president; Harry Swarn, vice-president; Andy Klingensmith, secretary; and Sue Magee, treasurer.

Freshmen officers were Don Sharer, president; Mike Musgrave, vice-president; Lynda Leech, secretary; and Joe Baldwin, treasurer.

The seniors climaxed a brilliant career in homecoming awards when their float, the Kleenex whale complete with spouting geyser, captured the first place, an honor won by this class for four years.

Sandy Klingensmith was elected Fall Prom Queen in the sophomore year, and Judy Pershing was elected Fall Prom Queen in the senior year.

And so throughout this year, the seniors went down the long hall happily, but each had a trace of sadness in knowing that this would be his last chapter of a high school career.





LOWELL HILTON ACTON

LOIS ELLEN ADAMSON

DAVID DALE ALFRED

Springfield High School 1, 2, 3; Football 1, 2, 3, 4; Basketball 1, 2, 3; Baseball 1, 2, 4; Track 1, 2, 3, 4.



MARGARET ELAINE BABB

F. H. A. 1, 2, 3, 4; G. A. A. 1, 2, 3, 4; F. T. A. 3, 4; Speech Club 3; J. C. L. 1; Pep Club 2, 3; Cheerblock 1, 2, 3, 4.

JOSEPH CLARENCE BALDWIN

Track 1, 2, 4; Baseball 1, 2, 3, 4; Football 1, 2, 3, 4; Class Vice-President 3; Basketball 1, 2, 3.

PAUL SANFORD BARNETT

Football 1, 2; B. A. A. 2.

CHARLES RICHARD BARTLEY  
Cloverdale High School 1, 2, 3; Plainfield High School 4.

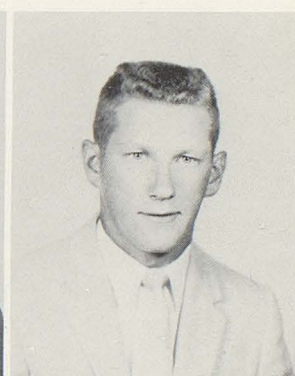
SYLVIA JEAN BAUER  
G. A. A. 1, 2, 3, 4, Secretary 4;  
F. H. A. 1, 2, 3, 4, Assistant Honor  
Chapter Chairman 2. (Continued on  
page 29)

HERBERT LEE CAIN  
Football 1, 2, 3, 4; Basketball 1, 2, 3,  
4; Track 1, 2, 3, 4; Baseball 1, 2, 3, 4.

MARILYN KAY CHILCOTE  
Mooresville High School 1; Plainfield High School 2, 3, 4.

ROBERT EARL CLARK  
Chorus 1; B. A. A. 3; J. C. L. 3; Science Club 3, 4; Honor Society 4.

NANCY KAY COOPRIDER  
F. H. A. 1, 2, 3, 4; S. S. S. 2, 3, 4.





CAROLYN SUE CORCORAN  
S.S.S. 2,3,4; F.H.A. 1,2,3;  
G.A.A. 1,2; J.C.L. 2,3; Pep Club  
3,4; Cheerblock 1,2,3,4.

WALTER HUGH CREEKBAUM  
Football 1,2,3,4; B.A.A. 1; Band 1,  
2; Cheerblock 1,2,3.

NORTA MAE CULVER  
Belle Union High School 1,2; Plain-  
field High School 2,3,4.



PHYLLIS NOREEN DAVIES  
Terre Haute 1; Cleveland, Ohio 2,  
3; Plainfield High School 4; S.S.S.  
4.

GEORGE JAMES DICKINSON  
Football 1; Chorus 1; B.A.A. 2,3.

BARBARA IONA DOWELL  
Pittsboro High School 1; Cheerblock  
1; F.H.A. 1,2,3; S.S.S. 1,2,3.



KATHLEEN VIRGINIA DUNIGAN  
F.H.A. 1,2,3,4, Song Leader 2;  
SILHOUETTES Staff 3,4, Assistant  
Editor 3. (Continued on page 29)

JEROLD ALAN EDMONDSON  
Band 1,2,3,4; Pep Band 1,2,3,4;  
Chorus 1,2,3,4; Ensemble 1,2,3,4;  
B.A.A. 3,4. (Continued on page 29)

LINDA CHARLENE ENDICOTT  
George Washington High School 1,2;  
Plainfield High School 3,4; F.H.A.  
3,4.

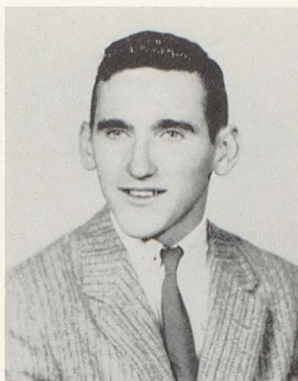


ELLA LOUISE ENGLISH  
F.H.A. 1,2,3,4; S.S.S. 1,2,3,4;  
Band 1,2,3,4; Pep Band 4; Cheer-  
block 1,2; Pep Club 1,2,3,4; Speech  
Club 1.

GARY LEE EPLEY  
Decatur Central High School 1,2,3;  
Plainfield High School 4.

MARJORIE CAROL FIELDS  
Chorus 1; F.H.A. 1,2,3,4.





# DONALD LEE FIRKINS

George Washington High School 1; B. A. A. 2, 3; Science Club 4; Track 3, 4; Cheerblock 3.

# CHARLES EDWARD FOGGATT

Band 1, 2, 3; Chorus 1, 2; Ensemble 2; Speech Club 3; B. A. A. 2, 3; J. C. L. 2, 3; Cheerblock 1, 2, 3; Honor Society 4.

# NAN LOUISE GETCHELL

B-Team Cheerleader 3, Varsity Cheerleader 4; Class Treasurer 3, 4; G. A. A. 1, 2. (Continued on page 29)

# FRED CLEMENT GOFF

Band 1, 2, 3; F. T. A. 3, 4; Chorus 2, 3, 4; Pep Band 2, 3; Track 1; "Girl Crazy" 3.

# RICHARD LEE GRIBBLE

F. T. A. 3, 4; J. C. L. 2, 3, 4; Science Club 3; Band 1, 2, 3; Pep Band 1, 2, 3. (Continued on page 29)

# BETH ANN HADLEY

F. H. A. 1, 2, 3, 4, Secretary 3; Honor Chapter Co-Chairman 4; G. A. A. 1, 2, 3, 4. (Continued on page 29)

# DONALD CARL HATHAWAY

Football 1, 2, 3; Track 1, 4; B. A. A. 1, 2, 3; Cheerblock 1, 2, 3, 4; Chorus 1.

# RICHARD EARL HEALD

F. F. A. 1, 2, 3, 4, Reporter 4; Band 1, 2, 3, 4; Pep Band 1, 2, 3, 4; Science Club.

# JAMES BRUCE HESSLER

Football 1; B. A. A. 2.

# JUDITH ANN HIGGINS

S. S. S. 1, 2, 3, 4; F. H. A. 1, 2, 3, 4; Cheerblock 4.

# JOHN ROBERT HOBBS

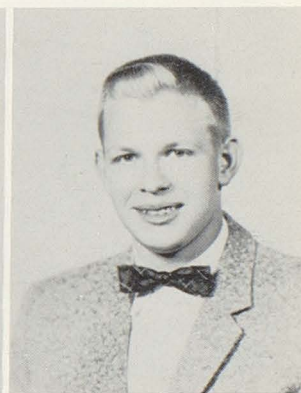
Baseball 1, 2, 3, 4; Track 1, 2; Football 1, 2, 3, 4; Basketball 1, 2, 3, 4.

(Continued on page 29)

# KIRK MARTIN HOLDCROFT

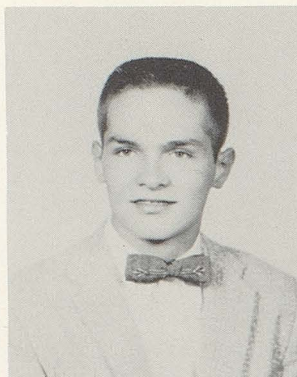
Band 1, 2, 3, Vice-President 3; Chorus 1, 2; Ensemble 1, 2; Football 1.

(Continued on page 29)





THOMAS LEE HOLZKNECHT  
 LARRY MILTON JENKINS  
 Clearspring High School 1, 2, 3;  
 MARGARET ANN JOHNSON  
 S.S.S. 1, 2, 3, 4; Pep Club 3, 4;  
 J.C.L. 1, 2, Treasurer 2; Band 1, 2;  
 (Continued on page 29)



DONNA JEAN JONES  
 F.H.A. 2, 3, 4; S.S.S. 1, 2; Chorus  
 1, 3; Cheerblock 1, 2; Pep Club 3, 4;  
 "Girl Crazy" 3.

FRED WILLIAM JONES  
 Georgetown High School 1, 2, 3; Foot-  
 ball 1, 2; Math Club 3; Class Play 3;  
 Biology Club 2.

JUDITH ANN JONES  
 F.H.A. 2.



JUDITH LEE JONES  
 F.H.A. 1, 2, 3, 4; S.S.S. 2, 3, 4; Pep  
 Club 3, 4; Chorus 3, 4; Ensemble 3,  
 4; "Girl Crazy" 3; Cheerblock 1, 2.

JANET KELSO  
 S.S.S. 2, 3, 4; G.A.A. 2, 3; Pep  
 Club 4.

ANDREA JANE KLINGENSMITH  
 G.A.A. 1, 2, 3, 4, Secretary 3, 4;  
 F.H.A. 1, 2, 3, 4, Parliamentarian 2;  
 (Continued on page 29)



SANDRA JEAN KLINGENSMITH  
 F.H.A. 1, 2, 3, 4; G.A.A. 1, 2, 3, 4,  
 President 4; Cheerblock 1, 2; Pep  
 Club 3, 4; (Continued on page 29)

PAUL MAYNARD KREBS  
 Basketball 1, 2; Track 1, 2, 3, 4;  
 Football 1, 2, 3, 4; Cheerblock 3;  
 Science Club 2, 3, 4, President 4;  
 B.A.A. 3; Chorus 1.

ACY DEWAYNE KYLE  
 George Washington High School; Bas-  
 ketball 1; B.A.A. 2, 3.

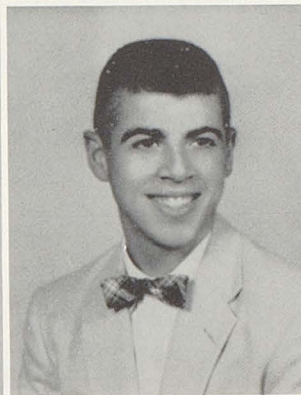




SANDRA SUE LEACH  
Honor Society 3, 4; B-Team Cheerleader 1; Varsity Cheerleader 2, 3, 4. (Continued on page 29)

LYNDA KAY LEECH  
Girls' Glee Club 1; Student Council 1; Class Treasurer 1; S.S.S. 1, 2; F.H.A. 3, 4. (Continued on page 91)

ELLEN ELIZABETH LITTLEHALE  
G.A.A. 1; S.S.S. 3, 4; F.H.A. 1, 3, 4; Pep Club 1, 3, 4; SILHOUETTES staff 4.



SUE ELLEN MAGEE  
Girls' Glee Club 1; Student Council 2; Class Treasurer 2; F.H.A. 1, 2, 3, 4; (Continued on page 91)

MELVYN MAX MARLOWE  
Science Club 1; B.A.A. 2; Track 3; Football 2; Cheerblock 1.

SHARON LEE MARSHALL  
G.A.A. 1, 2, 3, 4; Cheerblock 1, 2; Pep Club 3, 4; Traveling Quakers 2.

DALE EDWIN MARTIN  
Chrisman High School 1; Band 1; Greencastle High School 2; J.C.L. 2; Track 3.

PENNY LEE MAYS  
F.H.A. 1, 2, 3, 4; S.S.S. 2, 3, 4; Pep Club 3; Cheerblock 1, 2, 4.

PEGGY SUE MEYER  
Honor Society 4; Pep Club 3; Cheerblock 2, 3; F.H.A. 2, 3, 4; S.S.S. 2, 3, 4; Library Club 2.



NANCY ANNE MILHOUS  
Band 1; G.A.A. 1; F.H.A. 4; Pep Club 4; S.S.S. 3.

JUDITH ANN MISNER  
F.H.A. 1, 2, 3, 4; G.A.A. 1, 2, 3, 4; Recording Secretary 3; F.T.A. 2, 3, 4. (Continued on page 91)

DELBERT GENE MITCHELL  
F.F.A. 1, 2, 3, 4.





STEPHEN RAY MORRISON  
MARSHA KATHERINE MUNCY  
G.A.A. 1; Honor Society 4.  
JOHN MICHAEL MUSGRAVE  
Band 1, 2, 3, 4; Football Student Manager 1, 2; Basketball 1, 2; Baseball 1, 2, 3, 4. (Continued on page 91)



MARCELL NEAL  
S.S.S. 3; Pep Club 3; Traveling Quakers 3.  
LOUDELLA MARIE NEWBY  
MAX EDWARD NEWLIN  
Baseball 1, 2, 3, 4; Basketball 1, 2, 3; Football 1, 2, 3, 4; B.A.A. 2; F.F.A. 1, 2, 3, 4. (Continued on page 91)



TERESA ELIZABETH NEWLIN  
F.H.A. 1, 2, 3, 4; Historian 3; President 4; S.S.S. 1, 2, 3, 4. (Continued on page 91)

WILLIAM VICTOR NYSEWANDER  
F.F.A. 1, 2, 3, 4; B.A.A. 2, 3; Band 1, 2, 3, 4; Football 1, 2, 3; Cheerblock 1, 2; Track 1.

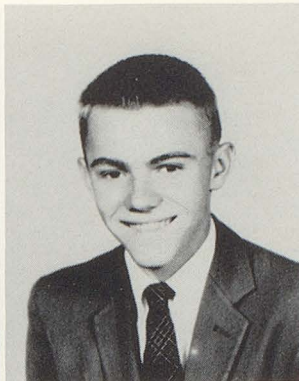
DOROTHY LEE OLIVER  
S.S.S. 2, 3, 4; F.H.A. 2, 3, 4; Pep Club 4.

DAVID ROLAND OSBORN  
Speech Club 3, 4; J.C.L. 1, 2, 3; Football 1, 2; B.A.A. 2, 3; Cheerblock 1, 2, 3; Science Club 4.

JANNIE LOU OVERBY  
Carmel High School 1, 2, 3; Plainfield High School 4.

JUDITH ANN PERSHING  
G.A.A. 1, 2; F.H.A. 1, 2, 3, 4; Pep Club 3, 4; Cheerblock 1, 2, 3, 4; Cheerleader 2, 3; Fall Prom Queen 4.





JUDITH ANN POWELL  
S.S.S. 2,3,4, Corresponding Secretary 4; F.T.A. 2,3,4; Pep Club 3.

LARRY ANTHONY RAY

RONALD DALE RICHARDSON  
J.C.L. 1,2; Football 1,2; Science Club 4; Student Council 2; Track 1, 2. (Continued on page 91)



CORNELIUS EDWARD RILEY  
Track 1,2,3; Golf 1; Cross-Country 1; B.A.A. 2,3; Cheerblock 2,3.

ANNA MARIE ROBINSON  
North Bowling League 2; S.S.S. 4.

LORNA RAE RUSHTON  
Clayton High School 1; Cheerleader 3,4; Cheerblock 2; Track Queen 3; F.H.A. 2,3,4; G.A.A. 2,3,4; Band 2,3.

JANE ELIZABETH SANFORD  
Edgerton, Wisconsin, High School 1,2,3; F.H.A. 4; F.T.A. 4; S.S.S. 4; G.A.A. 4; Pep Club 4; Cheerblock 4.

MARY MARGARET SAXON  
Ankara, Turkey, High School 1; Robert-Sale, Morocco, High School 1; Port Loyalty, Morocco, High School 2. (Continued on page 91)

CLAUDIA ANN SCHOLL  
S.S.S. 1,2,3,4; G.A.A. 1,2,3,4; F.T.A. 3,4, President 4; J.C.L. 2. (Continued on page 91)

BEVERLY ANN SCHULTZ  
S.S.S. 1,2,3,4, Recording Secretary 4; F.T.A. 3,4, Treasurer 4; J.C.L. 2,3. (Continued on page 91)

DON ALLEN SHARER  
Class President 1,3,4; Student Council 1; B.A.A. 2,3, President 3. (Continued on page 91)

HELEN DARLENE SHEETS  
S.S.S. 1,2,3,4; F.H.A. 1,2,3,4; Pep Club 4.





RICHARD LEE SIMPSON  
Honor Society 4; Speech Club 3, 4;  
"The Little Dog Laughed" 3; Chorus  
3. (Continued on page 91)

SHARON LOU SIMS  
S.S.S. 1, 2, 3, 4; Corresponding Sec-  
retary 2, 3; President 4; G.A.A. 1,  
2, 3, 4. (Continued on page 91)

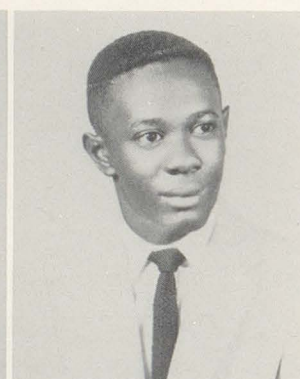
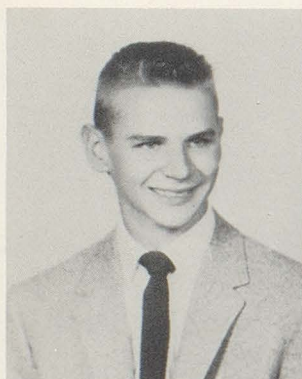
MARSHA DEE SKORJANC  
G.A.A. 1, 2, 3, 4; Treasurer 2; F.H.A.  
1, 2, 3, 4; F.T.A. 3, 4; Pep Club 3, 4.  
(Continued on page 91)



LINDA KAY SMOCK  
G.A.A. 1, 2, 3, 4; S.S.S. 1, 2, 3, 4;  
Treasurer 2, 3; Vice-President 4;  
F.T.A. 3, 4. (Continued on page  
91)

CAROLYN SUE SNODGRASS  
Pep Club 1, 2, 3, 4; F.H.A. 1, 2, 3, 4;  
S.S.S. 1, 2, 3, 4; Band 1, 2, 3.

ETHEL LORETTA STANLEY  
Pep Club; F.H.A. 1, 2, 3, 4; S.S.S.  
2, 3, 4; Band 1, 2, 3; G.A.A. 1.



HAROLD WAYNE STANLEY  
Basketball 1; B.A.A. 2, 3; Treasurer  
3; Cheerblock 1, 2, 3; Science Club  
4.

JERRY LEE SVENDSON  
Basketball 1; Baseball 2, 3, 4; Foot-  
ball Student Manager 2; Cheerblock  
1, 2, 3; Band 1, 2, 3; President 3;  
B.A.A. 2, 3.

HARRY EDGAR SWARN  
J.C.L. 2, 3, 4; Honor Society 3, 4;  
Speech Club 3, 4; Band 1, 2, 3, 4.  
(Continued on page 29)

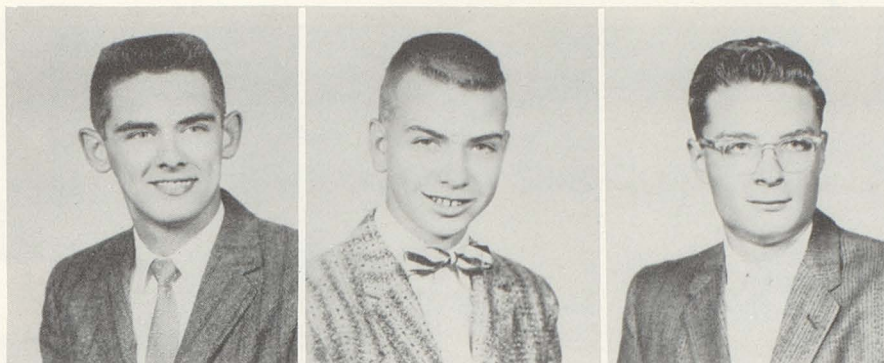


JACK T. TRUCKS  
Warren Central High School; Coffee  
High School. Science Club 2, 3;  
B.A.A. 3.

ANN PAULINE TURNER  
F.H.A. 1, 2, 3, 4; Parliamentarian 4;  
S.S.S. 1, 2, 3, 4; J.C.L. 2, 3; Sec-  
retary. (Continued on page 91)

CHARLES ALFRED TURNER  
Baseball 1, 2; Basketball 2, 3; Foot-  
ball 1, 2, 3, 4; Track 1, 2, 3. (Contin-  
ued on page 91)





DAVID REX WHITED  
Football 2, 3; B. A. A. 2, 3; Science Club 4; Student Council 4; Class Vice-President 4; Track 2, 3.

HAROLD WAYNE WINGLER  
B. A. A. 2, 3; Science Club 4; Football 1.

LARRY ARDEN WOOTON

## Activities Continued

### SYLVIA JEAN BAUER

Honor Chapter Chairman 3, Editor 4; Cheerblock 1, 2, 3, 4; Pep Club 3, 4; J. C. L. 2; Honor Society 4; QUAKER SHAKER Staff 3, 4, Co-Assistant Editor 3, Co-Editor 4; Girls' State 3; Speech Club 3.

### KATHLEEN VIRGINIA DUNIGAN

Editor-in-Chief 4; G. A. A. 1, 2, 3; F. T. A. 2, 3; Speech Club 3, 4; Honor Society 3, 4, Treasurer 3; QUAKER SHAKER Staff 2, 3; "The Little Dog Laughed" 3; "Don't Take My Penny" 3; "The Great Big Doorstep" 4; "Annie Get Your Gun" 2; "Girl Crazy" 3; Chorus 1, 2, 3, 4, Secretary-Treasurer 2; Ensemble 1, 2, 3, 4; Cheerblock 1, 2, 3, 4; Pep Club 3, 4.

### JEROLD ALAN EDMONDSON

J. C. L. 2; "Annie Get Your Gun" 2; "Girl Crazy" 3; Speech Club 4; Science Club 1, 2, 3, 4, Vice-President 3, Secretary 2, 4; Honor Society 3, 4.

### NAN LOUISE GETCHELL

Chorus 1, 2, 3, 4; Ensemble 2, 4; Honor Society 4; F. T. A. 4; J. C. L. 2; "Annie Get Your Gun" 2; "Don't Take My Penny" 3.

### RICHARD LEE GRIBBLE

Cheerblock 1; Speech Club 3, 4; Treasurer 3; Debate Team 3; "Don't Take My Penny" 3; QUAKER SHAKER Staff 4; Boys' State 3.

### BETH ANN HADLEY

Treasurer 4; F. T. A. 2, 3, 4, Secretary 3; QUAKER SHAKER Staff 4; SILHOUETTES Staff 4; Band 2, 3, 4, Librarian 4; Pep Band 3; Cheerblock 1, 2, 4; Pep Club 4; Traveling Quakers 3; Chorus 1; Speech Club 4; "The Great Big Doorstep" 4; Honor Society 4.

### JOHN ROBERT HOBBS

Honor Society 3, 4, President 4; J. C. L. 2, 3; Science Club 1, 2; Band 1, 2, 3; Pep Band 1, 2.

### KIRK MARTIN HOLDCROFT

Basketball Student Manager 1; J. C. L. 2, 3, Vice-President 3; Student Council 3; Speech Club 3, 4, President 4; Honor Society 4; QUAKER SHAKER Staff 3, 4, Sports Editor 4; SILHOUETTES Staff 2, 3, 4; "The Little Dog Laughed" 3; "The Great Big Doorstep" 4; Cheerblock 1, 2, 3.

### MARGARET ANN JOHNSON

Traveling Quakers 3; Pep Band 1, 2; Girls' Glee Club 1; F. T. A. 2, 3, 4, President 3, State Editor 4; G. A. A. 1, 2, 3, 4, Secretary 2; Honor Society 3, 4; "Don't Take My Penny" 3; QUAKER SHAKER Staff; SILHOUETTES Staff 4.

### ANDREA JANE KLINGENSMITH

Song Leader 3, Historian 4; Class Secretary 2; Student Council 2; Honor Society 4; Cheerblock 1, 2; Pep Club 3, 4; Traveling Quakers 3; Speech Club 3.

### SANDRA JEAN KLINGENSMITH

Speech Club 3; Traveling Quakers 3; Class Secretary 3; Honor Society 4; Fall Prom Queen 2.

### SANDRA SUE LEACH

Athletic Council 3, 4; Girls' Glee Club 1; Chorus 2, 4; Ensemble 4; "Annie Get Your Gun" 2; G. A. A. 1, 2, 3, 4, President 3; F. T. A. 2, 3, 4; F. H. A. 1, 2, 3, 4; Speech Club 3, 4; "Don't Take My Penny" 3.



## Junior Class



THE JUNIOR CLASS OFFICERS ARE Darryl Miracle, president; Bill Bally, vice-president; Dorothy Barnaby, secretary; and Sally Bly, treasurer.

Every king has a crown prince. This is the role of the Junior Class. Ready and eager to thrust the seniors from their throne and take over as student kings, the juniors, the class of 1960, rolled up many honors. It was a junior, Nina Neel, who won the prime honor of being elected the 1958 Homecoming Queen. This was the third year for the class of "60" to have the queen chosen from their ranks.



# *Juniors*



Andrews, William  
Arden, Nancy  
Atkinson, Carolyn  
Austin, Jo Ann  
Averette, Barbara



Baines, Robert  
Baldwin, Susan  
Bally, William  
Barnaby, Dorothy  
Bayles, Bruce



Bayliff, Sandy  
Bennett, Forrest  
Blair, John  
Blanton, John  
Bly, Sally



Bolen, Susan  
Brinker, Gloria  
Burns, Jill  
Calbert, Gretchen  
Carter, David



Castetter, Carl  
Castetter, Marcia  
Claxton, Pat  
Cooper, Dean  
Copeland, John



Cornelius, Ann  
Corrie, Martha  
Covert, Sharon  
Craige, Janice  
Crews, Diane





Crowe, Darlene  
Cummings, Jerry  
Curtis, Glenn  
Daum, Russell  
Decker, Bill



Deissler, Hazel  
Engle, Judy  
Etherington, Howard  
Ferrell, Jerry  
Ferrell, Larry



Friel, Faith  
Gaddie, Doris  
Gannon, Earl  
Gorman, David  
Gosnell, Jo Ann



Green, Mark  
Groninger, Judy  
Hancock, Steve  
Happel, Peggyetta  
Hardin, James



Hardin, Rita  
Harris, Kenneth  
Heald, Eileen  
Hopkins, Linda  
Hutchens, Rosalie



Janssen, James  
Jones, Martha  
Karpel, Robert  
Keck, Ronnie  
Keller, Sandy

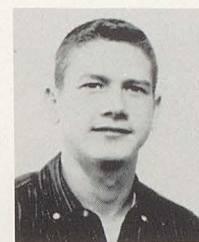




Lease, Janice  
Leech, Carolyn  
Long, Carolyn  
McAninch, Cheryll  
McIndoo, Mary



McMullin, Odis  
Mabrey, Eunice  
Marks, Mike  
Martin, Walter  
Maupin, Maxine



Mays, Linda  
Miracle, Darryl  
Mitchell, Carol  
Mitchell, Don  
Neel, Nina



Newlin, Mary  
Nichols, Jackie  
O'Brien, Karen  
Olvey, Don  
Parsley, Jerry



Pettit, James  
Pickett, Tom  
Piper, Sue  
Pope, Jon  
Powell, Bonnie



Priest, Sharon  
Raper, Heath  
Ray, Janice  
Rush, Larry  
Rushton, Diane





Schendel, Tom  
Schlegel, Sandra  
Shadwick, Scott  
Sharer, Rob  
Shook, Raymond  
Sims, Jimmy



Skolaut, Carolyn  
Slaughter, Mike  
Smith, Nancy  
Sommers, Kathe  
Southworth, Alice  
Stafford, Robert



Stanley, Judy  
Steele, Walter  
Sterrett, Robert  
Storms, Linda  
Sutton, Harold  
Sutton, Loretta



Svendsen, Larry  
Swan, Sam  
Swarn, Emma  
Swarn, Richard  
Thompson, Rose  
Wade, Ed



Walker, Connie  
Watson, Shirley  
Weddle, Jack  
Whitaker, Bill  
White, Jill  
Willis, Rita



Wilson, Judy  
Wilson, Paul  
Winstead, Marilyn  
Winsted, Max  
Wittorff, Judy  
Wright, Larry

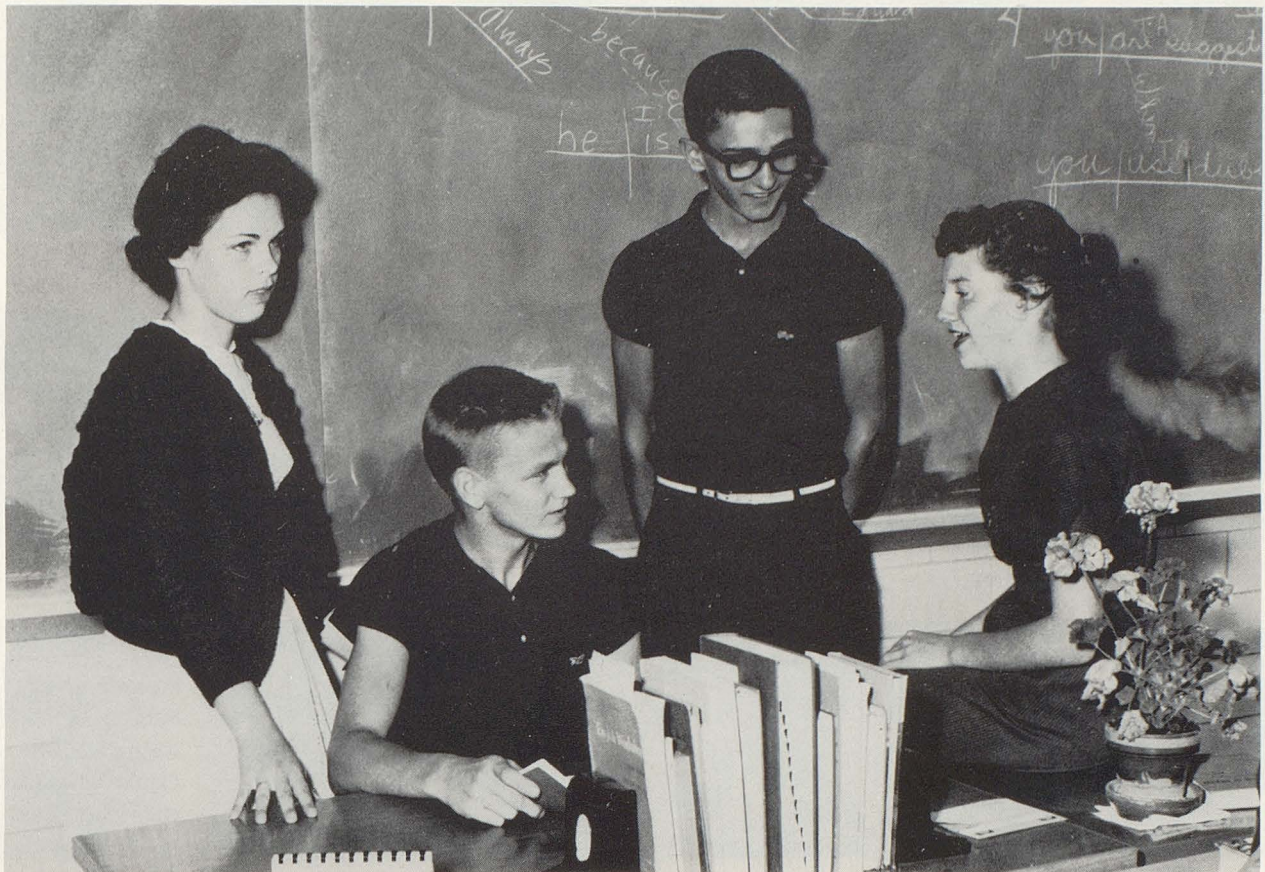


Young, Carol

NOT PICTURED: Christopher, Don  
Polson, Linda  
Ashworth, Paul



## Sophomore Class



SOPHOMORE CLASS OFFICERS ARE Pat Tompkins, treasurer; Charles Greene, president; Terry Hayden, vice-president; and Kay Welch, secretary.

The Sophomore Class during the year carried a heavy burden. Last year as freshmen they underwent all the humiliation to which, by tradition, the youngest class is subjected. This year they flexed their muscles and prepared to assert their rights as mature high school students. Then they discovered, alas, the freshman class would not be in high school; they were again the youngest!



# Sophomores



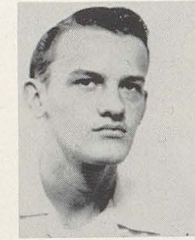
Alexander, Nancy  
Anderson, Larry  
Arnold, Mary  
Baker, Ann  
Bissey, Annette



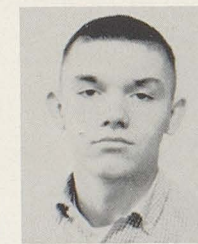
Blanton, Carol  
Boles, David  
Bowman, Diane  
Brandgard, Robin  
Brizendine, James



Brunson, Mary  
Buis, Bonnie  
Campbell, Diana  
Canary, James  
Chandler, Paul



Cook, Eddie  
Culver, Lorin  
Davis, David  
DePriest, Jack  
Dewar, David



Earhart, Mike  
Edmondson, Jim  
Edwards, Bernard  
Ellis, Mildred  
Etchason, Beverly



Fields, Marcia  
Fields, Patty  
Finchum, Robbie  
Foley, Jerry  
Fouts, Castyle

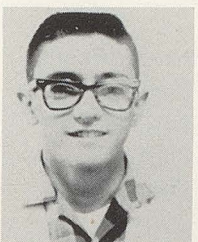




Ford, Carol  
 Fredrick, Raymond  
 Fulkerson, Robert  
 Getchell, Martha  
 Grable, Barbara



Greene, Charles  
 Gribble, Ronnie  
 Hallatt, Bonita  
 Harlan, Steve  
 Hartgraves, Beverly



Hayden, Terry  
 Heald, Robert  
 Heald, Diana  
 Hicks, Judy  
 Holzknicht, Larry



Jenkel, Sidney  
 Jennings, Carolyn  
 Johnson, Pam  
 Johnston, Vicki  
 Jones, Margaret



Kellum, Evalyn  
 Kellum, Kathy  
 Kern, Harry  
 Killman, Betty  
 Kirsch, Judy



Kyle, Loretta  
 Lampert, Thomas  
 Lane, Mary Lou  
 Lawton, Leigh  
 Long, Peggy





Long, Rosemary  
Lynch, John  
Lynch, Sally  
McDaniel, Ted  
Mahan, Mary



Mayer, Susan  
Meeks, Mason  
Mitchell, Mike  
Modglin, William  
Muncy, Gwinetta



Neal, Karen  
Newlin, Susan  
Pell, Randy  
Pope, Don  
Price, Larry



Raper, Todd  
Rhea, Ronald  
Robson, Jay  
Roth, Virginia  
Schenck, Georgianna



Searcy, Revin  
Sharp, Marilyn  
Simmons, Judy  
Skirvin, Ronald  
Skorjanc, Bill



Smith, Billy  
Stafford, Don  
Stamper, Jane  
Stanley, Annamae  
Starbuck, Sandra





Storms, Mike  
Swarn, Charles  
Swift, Meredith  
Switzer, Mike  
Taylor, James



Tompkins, Pat  
Trusty, Richard  
Utt, Ernie  
VanWinkle, Terry  
VanGordon, Mike



Vickers, Nancy  
Wagner, Diana  
Wagner, Robert  
Ward, Kenneth  
Watson, Mary Jo



Watts, Robert  
Weber, Judy  
Webster, John  
Welch, Kay  
Westbrook, Linda



Whicker, Garford  
Whited, Sue  
Wiggins, Stephen  
Wilson, Joe  
Wise, William



Wiseman, Betty  
Wootton, Walter  
Young, Phyllis

NOT PICTURED:  
Givens, Robert  
Harvey, Wayne  
Mullican, John  
Stamper, David  
Sullivan, Carl







# Organizations

Organizations and their activities consume much of the P.H.S.er's time in an interesting and sometimes educational fashion. Don Sharer, busy senior class president, and Judy Misner, equally busy senior, are typical of the officers and members of the many organizations that keep P.H.S. busy and informed.



# Silhouettes of '59



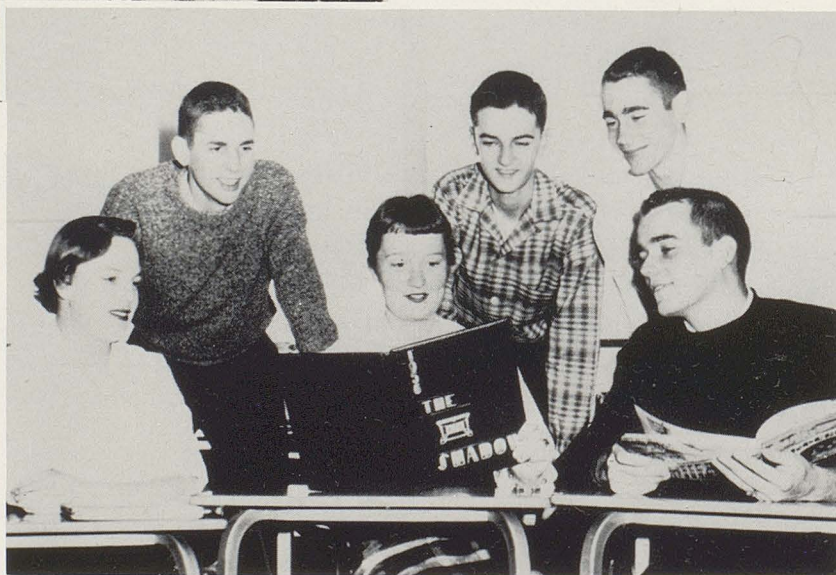
Mrs. Niles, SILHOUETTES advisor, discusses a layout with Nancy Arden, assistant editor, and Kathy Duni-gan, editor-in-chief. The practice of naming a junior as assistant editor began three years ago for the pur-  
pose of providing valuable training for the junior.



(ABOVE, LEFT TO RIGHT) Ellen Little-hale, (art editor), points out a cover design to Lynda Leech (faculty editor), Glen Curtis, Margaret Johnson, Beth Hadley, Mike Marks (club editors), and Sue Magee, (baby pictures).

(RIGHT) The business staff consists of (BACK ROW) Kirk Holdcroft, Dean Cooper, and David Gorman (advertis-  
ing). (FRONT ROW) Claudia Scholl, Carolyn Leech (subscriptions), and Mike Musgrave (advertising). (NOT PICTUR-  
ED Sydney Jenkel, subscriptions).

SILHOUETTES OF '59, P.H.S. annual, is put out by two edi-  
tors and a staff under the guid-  
ance of Mrs. Niles, advisor.  
The ninety-six page book pre-  
sents an interesting and accur-  
ate record of school events,  
faculty, sports, classes and  
organizations for present en-  
joyment and future reference.





# Quaker Shaker

Through the QUAKER SHAKER, our school paper, the staff seeks to inform and entertain the student body and parents. The paper, which is published twelve times a year, last year received a second place rating from CSPA and hopes to receive an All-American rating for the year 1958-59.



Nancy Alexander, Rita Harden, and Sally Bly, assistant editors, and Garford Whicker, assistant sports editor, all worked on the paper this year.



Reporters Claudia Scholl, Carolyn Leech, Beth Hadley, Judy Wittorff, Lynda Leech, and Richard Gribble contributed to the paper throughout the year.



(ABOVE): The senior editors, Teresa Newlin and Sylvia Bauer, and the sports editor, Kirk Holdcroft, confer with the QS advisor, Mrs. Niles.



Our amateur photographer, Mike Musgrave, took pictures of many school events for the QUAKER SHAKER. His pictures provided a good cross-section of life at P. H. S.



# Student Council

The Student Council is an organization of students, elected by the students, to serve as their official representatives in all matters of concern to the entire school. It provides a medium through which student opinion may be heard and a forum for the consideration of common school problems. The main purpose of the Student Council is to teach citizenship, and thus, the council becomes, in reality, a laboratory of citizenship. It also acts as a clearinghouse for most, if not all, student activities.



OFFICERS OF STUDENT COUNCIL ARE Pat Tompkins, secretary; Joe Baldwin, vice-president; Mrs. Haines, sponsor; Mike Musgrave, president; and Kay Welch, treasurer.

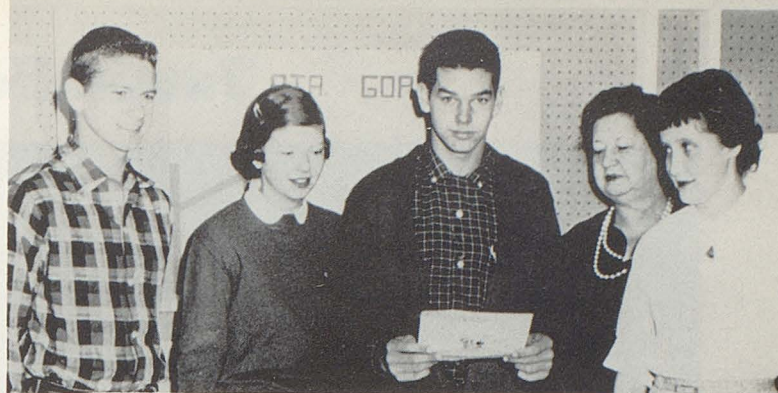
STUDENT COUNCIL REPRESENTATIVES FOR 1958-59 ARE (STANDING) Bill Bally, Larry Ferrell, Dean Cooper, Charles Greene, Harry Swarn, Terry Hayden, and Mrs. Haines. (SEATED) David Whited, Kay Welch, Pat Tompkins, Mike Musgrave, Joe Baldwin, and Emma Swarn.





# Honor Society

The goal of every conscientious student is to make Honor Society. An honorary organization, it admits only those who qualify on the basis of leadership, scholarship, character, and service. Ten percent of the junior class and fifteen percent of the senior class can be elected to membership. The largest project, the annual Sample Fair held in the spring, provides funds for the Girard Award, which is given to the graduate with the highest average in mathematics for four years.



OFFICERS OF HONOR SOCIETY ARE Darryl Miracle, vice-president; Mary Saxon, secretary; Jack Hobbs, president; Mrs. Masten, sponsor; and Nancy Arden, treasurer.



HONOR SOCIETY MEMBERS ELECTED IN 1957 ARE (BACK ROW) Mike Musgrave, Jerry Edmondson, Harry Swarn, Jack Hobbs, Kathy Dunigan, Teresa Newlin. (FRONT ROW) Margaret Johnson, Lynda Leech, Sandy Leach, Mary Saxon, Claudia Scholl, and Ann Turner.



MEMBERS ELECTED IN 1958 ARE (BACK ROW) Ronnie Keck, Mike Marks, Dean Cooper, Kirk Holdcroft, Mike Slaughter, Richard Simpson, Charles Foggatt, Darryl Miracle, Don Sharer, Tom Schendel, Bob Clark. (SECOND ROW) Sharon Priest, Beth Hadley, Sandy Klingensmith, Sue Magee, Nancy Arden, Nan Getchell, Peggy Meyers, Sylvia Bauer, Andy Klingensmith, Judy Powell, Marsha Muncy. (FRONT ROW) Rita Hardin, Carolyn Leech, Janice Craig, Nancy Stanley, Sally Bly, Jo Anne Austin.



# Future Teachers



F.T.A. OFFICERS ARE (LEFT TO RIGHT) Martha Corrie, vice-president; Beverly Schultz, treasurer; Claudia Scholl, president; Carolyn Leech, secretary; Mrs. Masten, sponsor.



State editor, Margaret Johnson

The F.T.A. organization is for students who are interested in teaching as their life's occupation. Many members are given the opportunity to "try their wings" by doing substitute teaching in the lower grades during the school year.



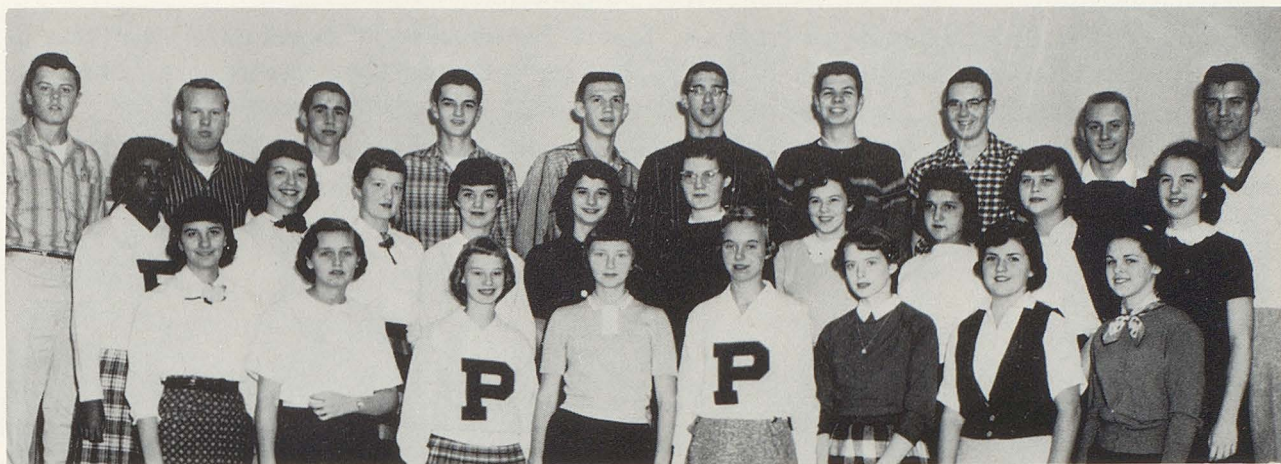
F.T.A. MEMBERS ARE (LEFT TORIGHT, BACK ROW) R. Gribble, D. Davis, R. Finchum, C. Fouts, R. Gribble, M. Slaughter, D. Sharer, B. Watts, F. Goff. (MIDDLE ROW) S. Leach, T. Newlin, M. Brunson, E. Kellum, C. McAninch, N. Getchell, M. Saxon, J. Sanford, L. Leech. (FRONT ROW) S. Magee, N. Arden, M. Corrie, L. Smock, E. Swarn, C. Leech, S. Bolen, M. Arnold.



F.T.A. MEMBERS ARE (LEFT TO RIGHT, BACK ROW) J. Burns, C. Long, B. Schultz, J. Lease, M. Johnson, S. Sims, C. Scholl, J. Kirsch. (MIDDLE ROW) S. Priest, M. McIndoo, E. Babb, N. Alexander, B. Hartgraves, K. Kellum, P. Tompkins, J. White. (FRONT ROW) J. Wittorff, L. Storms, J. Powell, J. Misner, B. Hadley, J. Simmons, S. Bly.



# Speech Club



SPEECH CLUB MEMBERS SHOWN ABOVE ARE (BACK ROW) Garford Whicker, Forest Bennett, David Gorman, Dean Cooper, Larry Ferrell, Bill Bally, Mike Slaughter, Bob Karpel, Bill Wise, Eddie Cook. (SECOND ROW) Emma Swarn, Sandy Bayliff, Carolyn Leech, Susie Bolen, Janice Lease, Martha Getchell, Pam Johnson, Diana Heald, Carolyn Jennings, Mary Arnold. (FRONT ROW) Ann Cornelius, Gloria Brinker, Judy Wittorff, Pat Claxton, Janice Craige, Virginia Roth, Kathy Kellum, and Pat Tompkins.



THE SENIOR SPEECH CLUB MEMBERS ARE (BACK ROW) Harry Swarn, Jerry Edmondson, David Osborn, Richard Gribble, Richard Simpson, Kirk Holdcroft, Al Turner, Mike Musgrave. (SECOND ROW) Don Sharer, Linda Smock, Teresa Newlin, Kathy Dunigan, Nan Getchell, Sandy Leach, Lynda Leech, Sue Magee. (FRONT ROW) Judy Misner, Claudia Scholl, Margaret Johnson, Beverly Schultz, Louise English, Beth Hadley, and Ann Turner.

Speech Club is an honorary organization; all prospective members must have a "B" average and must audition before the club to become members. The main activities of the club are the two plays that are presented annually, in which every member is able to participate, either behind the lights or on stage.

Executive power of Speech Club is vested in (right) Mrs. Betty Niles, advisor; Lynda Leech, vice-president; Kirk Holdcroft, president; Janice Craige, secretary; and Harry Swarn, treasurer.





## Future Homemakers remained active

One of P.H.S.'s largest organizations, Future Homemakers of America, is also one of the busiest. The annual Work Day, at which time the enthusiastic members rake leaves, wash windows, and clean house for community housewives, provided money for the Fall Prom. Sponsoring the Purdue Glee Club for the second successful year helped finance the W.P.A. dance in the spring. Besides keeping busy, F.H.A. spreads good cheer at Christmas time by visiting the Lebanon Orphanage, loaded down with gifts for all the children.



SOPHOMORE MEMBERS ARE (BACK ROW) Annamae Stanley, Nancy Alexander, Sally Lynch, Carolyn Jennings, Judy Weber, Ann Baker, Sidney Jenkel, Evalyn Kellum, Martha Getchell, Beverly Etchason, Diane Bowman. (SECOND ROW) Marcia Fields, Jane Stamper, Ann Ellis, Pam Johnson, Mary Lou Lane, Diana Wagner, Sue Whited, Diane Heald, Susan Mayer, Diana Campbell, Judy Kirsch, Susie Newlin, Mary Jo Watson, Barbara Grable. (FIRST ROW) Sandra Starbuck, Kay Welch, Judy Simmons, Georgianna Schenck, Kathy Kellum, Annette Bissey, Marilyn Sharp, Phyllis Young, Pat Tompkins, Carol Ford, Bonnie Buis, Judy Hicks, and Meredith Swift.



JUNIOR MEMBERS ARE (BACK ROW) Nina Neel, Carolyn Skolout, Rosalie Hutchens, Darlene Crowe, Bonnie Powell, Janice Lease, Martha Corrie, Jo Ann Gosnell, Cheryl McAninch, Connie Walker, Nancy Arden, Susie Bolen, Linda Polson, Janice Craig, Carolyn Leech, Alice Southworth, Judy Stanley. (SECOND ROW) Nancy Smith, Eilene Heald, Diane Crews, Barbara Averette, Rita Hardin, Jill Burns, Carolyn Atkinson, Faith Friel, Carol Young, Jill White, Jo Anne Austin, Carol Mitchell, Susan Baldwin. (FIRST ROW) Peggy Happell, Linda Storms, Diane Rushton, Gretchen Calbert, Dorothy Barnaby, Karen O'Brien, Judy Wittorff, Sandy Keller, Linda Hopkins.



## and influential at P.H.S.



SENIOR MEMBERS OF F.H.A. ARE (BACK ROW) Carole Fields, Lynda Leech, Sue Magee, Sandy Leach, Peggy Meyers, Kathy Dunigan, Donna Jones, Jane Sanford, Teresa Newlin, Mary Saxon, Nancy Milhous, Sylvia Bauer. (SECOND ROW) Beth Hadley, Penny Mays, Helen Sheets, Elaine Babb, Sandy Klingensmith, Judy Jones, Judy Higgins, Andy Klingensmith, Louise English, Linda Endicott, Carolyn Snodgrass. (FIRST ROW) Nancy Coop-rider, Loretta Stanley, Marsha Skorjanc, Lorna Rushton, Judy Misner, Judy Pershing, Ann Turner, and Dorothy Oliver.



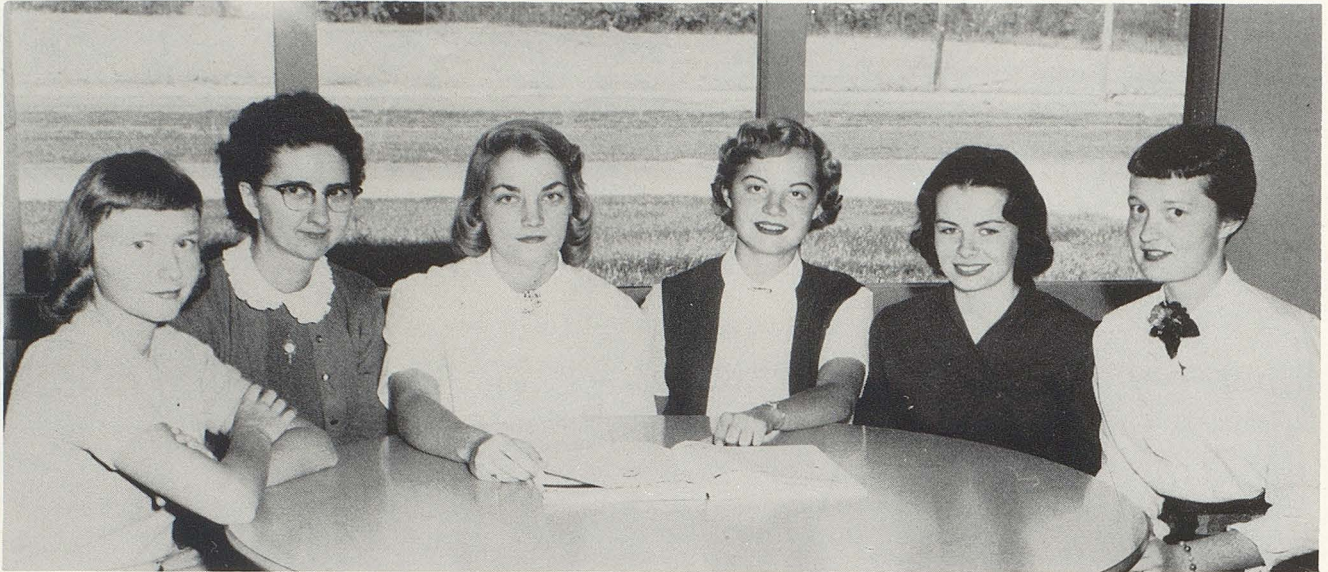
The executive power of F.H.A. is given to the officers and members of the board shown above: (LEFT TO RIGHT) Marilyn Sharp, song leader; Beth Hadley, assistant Honor Chapter chairman; Judy Wittorff, Honor Chapter chairman; Mrs. Truax, sponsor; Sylvia Bauer, editor; Andy Klingensmith, historian; Carolyn Atkinson, secretary; Teresa Newlin, president; Sue Magee, vice-president; Judy Stanley, treasurer; and Ann Turner, parliamentarian.

(LEFT) Rita Hardin represented the Central District F.H.A. on the state level as historian. She was responsible for keeping an accurate history of the organization and for compiling a yearbook for display.





## G.A.A.: Sports-minded



G.A.A. OFFICERS FOR THE YEAR ARE (LEFT TO RIGHT) Patty Claxton, vice-president; Miss Snider, sponsor; Sandy Klingensmith, president; Sylvia Bauer, secretary; Beth Hadley, treasurer; and Carolyn Leech, recording secretary.

The G.A.A., sponsored by Miss Snider, stresses good sportsmanship and improvement of athletic abilities. Skill in athletics is obtained by weekly games in such sports as basketball, hit pin, volleyball, baseball, and deck tennis.

Points are earned for participation in these sports. Awards are given for attainment of a certain number of points and are received by the girls at a Mother and Daughter Banquet held annually in the spring. For earning 250 points a girl receives a letter; for 350, a state plaque award; and for 500, a sweater.



STATE PLAQUE WINNERS IN THEIR JUNIOR YEAR WERE (LEFT TO RIGHT, BACK ROW) Andy Klingensmith, Sharon Sims, Sharon Marshall, Judy Misner, Marsha Skorjanc. (FRONT ROW) Margaret Johnson, Sylvia Bauer, Lynda Leech, Sandy Leach, Sandy Klingensmith.



# girls' organization



JUNIOR AND SENIOR MEMBERS OF G.A.A. ARE (BACK ROW, LEFT TO RIGHT) S. Bauer, J. Craig, J. Groninger, S. Bayliff, L. Smock, J. Gosnell, J. Sanford, C. McAninch, C. Walker, S. Leach, M. Castetter, J. Lease, L. Leech, S. Magee, C. Leech. (SECOND ROW) M. Johnson, D. Crews, R. Hardin, C. Scholl, S. Marshall, A. Klingensmith, S. Sims, J. Stanley, J. Burns, E. Babb, S. Klingensmith, P. Claxton. (FIRST ROW) L. Storms, J. Misner, L. Rushton, B. Hadley, J. White, D. Barnaby, M. Skorjanc, D. Rushton.



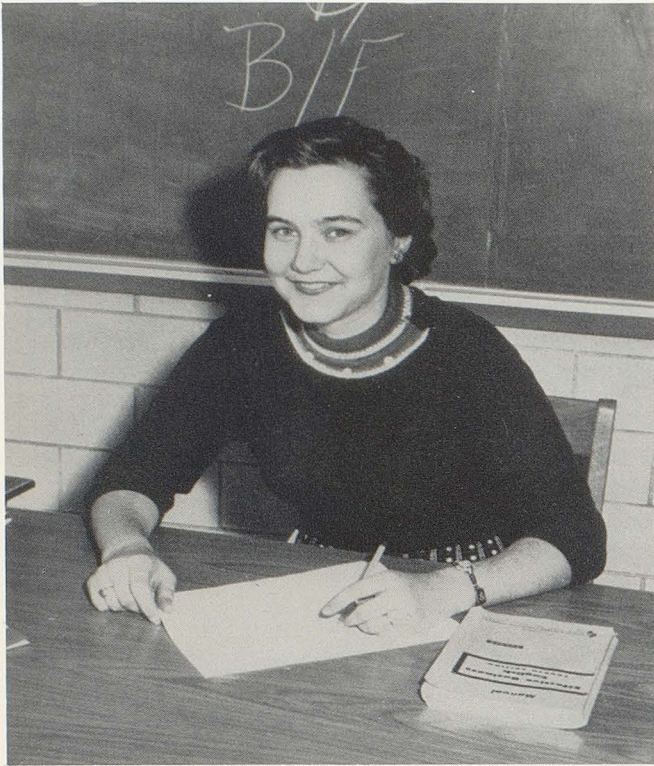
SOPHOMORE MEMBERS OF G.A.A. ARE (LEFT TO RIGHT, BACK ROW) S. Mayer, P. Johnson, S. Lynch, V. Johnston, M. Brunson, M. Getchell, A. Baker, E. Kellum, B. Etchason, C. Jennings, M. Lane, N. Alexander, A. Stanley, D. Campbell. (FIRST ROW) D. Welch, B. Grable, G. Schenck, B. Buis, S. Newlin, J. Kirsch, D. Heald, K. Kellum, M. Watson, P. Tompkins, J. Simmons, P. Long.



FRESHMAN MEMBERS OF G.A.A. ARE (BACK ROW, LEFT TO RIGHT) S. Page, K. Ziegler, C. Truax, A. Arden, B. Riddle, T. Bally, B. Andrews, D. Tompson, A. Newlin, J. Praay, B. Norris. (FRONT ROW) P. Kelly, L. Leach, B. Burkhalter, M. Ross, S. Whitaker, K. Bryant, J. Reagan, L. Smock, J. Weddle, J. James.



## Sunshine Society:



Sunshine sponsor, Mrs. Barnes

The Sunshine Society raises money to give to needy organizations. At Christmastime, donations and food were taken to the Nursing Home in Plainfield and the County Home in Danville. The old folk also enjoyed the Christmas carols sung by the girls.

The Sunshine girl has very high ideals which are to be followed. To help carry out this idea, each girl selects an "ideal lady" at the beginning of the year. The identity of the girl is unknown to the ideal lady until a tea that is given in honor of the mothers of the girls and the ideal ladies.



OFFICERS ARE (LEFT TO RIGHT) Judy Powell, corresponding secretary; Linda Smock, vice-president; Sharon Sims, president; Beverly Schultz, recording secretary; and Ann Cornelius, treasurer.



## *a charitable organization*



S. S. S. MEMBERS ARE (LEFT TO RIGHT, BACK ROW) E. Swarn, P. Claxton, J. Groninger, S. Bayliff, J. Gosnell, C. McAninch, C. Walker, M. Castetter, S. Bolen, E. Mabrey, A. Cornelius, A. Southworth. (FRONT ROW) S. Priest, L. Mays, C. Young, M. Maupin, C. Skolaut, S. Covert, J. White, S. Schlegel, G. Brinker, N. Smith, L. Storms.



S. S. S. MEMBERS ARE (LEFT TO RIGHT, BACK ROW) C. Snodgrass, S. Whited, L. Smock, P. Meyer, T. Newlin, J. Sanford, R. Long, P. Fields, M. Brunson, M. Mahan, M. Saxon, J. Higgins, N. Milhous, A. Robinson, M. Johnson. (MIDDLE ROW) J. Blanton, P. Mays, C. Corcoran, H. Sheets, C. Scholl, B. Schultz, S. Sims, K. Neal, L. English, E. Littlehale, J. Jones, B. Hartgraves. (FRONT ROW) L. Stanley, A. Turner, J. Powell, M. Fields, N. Davies, C. Ford, N. Coopriders, J. Kelso, D. Oliver, G. Schenck.



## Science Club



MEMBERS OF THE SCIENCE CLUB ARE (LEFT TO RIGHT, BACK ROW) David Osborn, Larry Ferrell, Russell Canary, Mike Slaughter, Richard Simpson, Charles Foggatt, Dean Cooper, David Gorman. (SECOND ROW) Bob Clark, Bob Stafford, Larry Rush, Bob Karpel, Jerry Edmondson, Bob Sterret, and Lee Lawton. (FIRST ROW) Mr. Lemme, sponsor; David Boles, Paul Krebs, Terry VanWinkle, Jackie Nichols, and Bob Watts.

In keeping with the space-consciousness of the times, the Science Club had for its main project this year the building of a space rocket.

Under the direction of Mr. Lemme, the club holds meetings with speakers, films, or discussions of past experiments. Also in the plans for this year was the development of a Chemistry and Physics club for the purpose of combining the resources of the two.

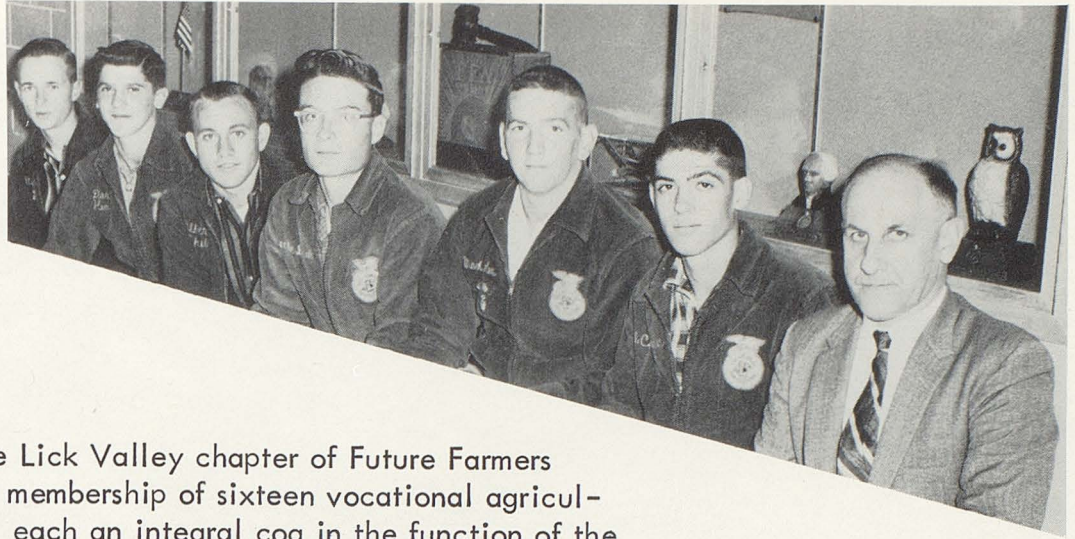


OFFICERS OF THE SCIENCE CLUB ARE (LEFT TO RIGHT) Mr. Lemme, sponsor; Jerry Edmondson, secretary-treasurer; Paul Krebs, president; Dean Cooper, vice-president.



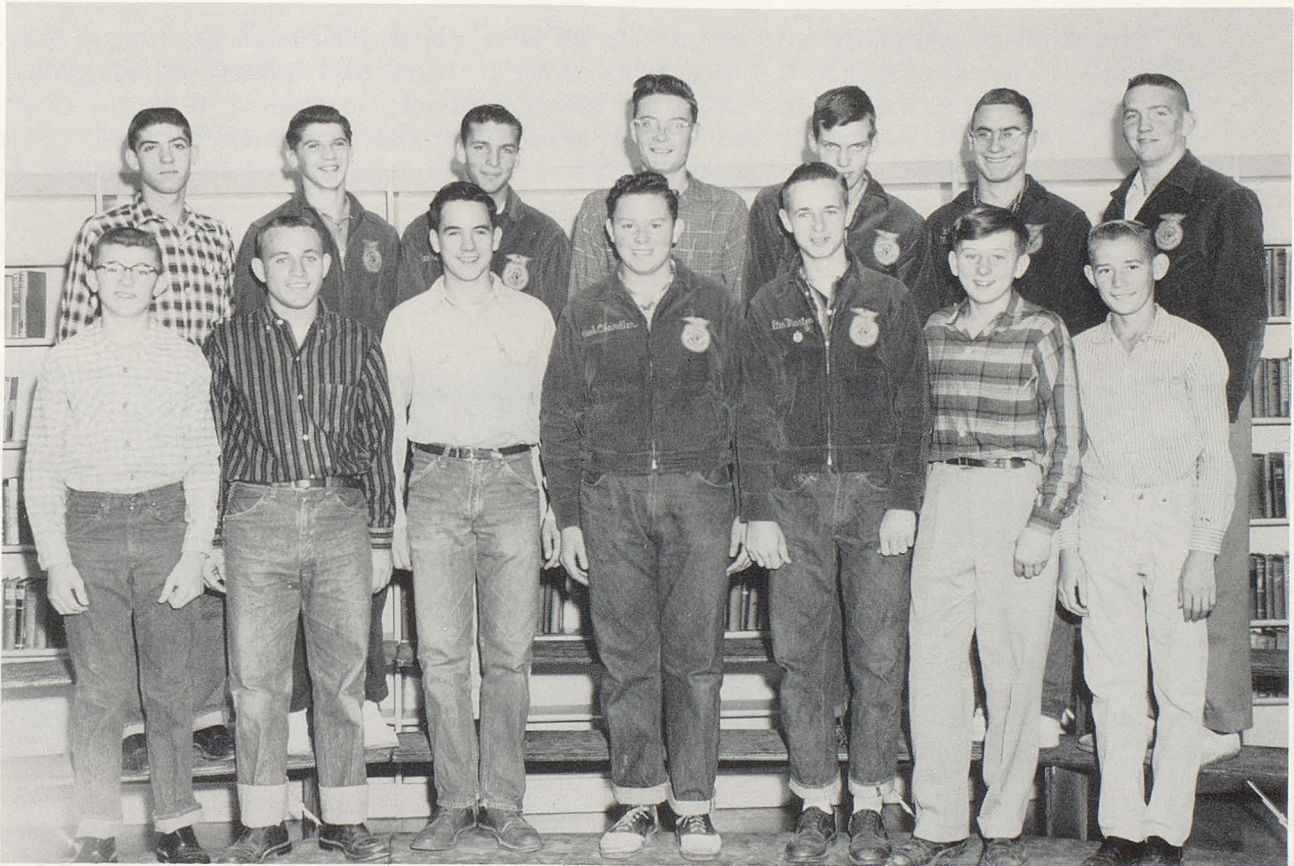
# Future Farmers of America

F.F.A. OFFICERS ARE (LEFT TO RIGHT) Walter Martin, sentinel; Dick Heald, reporter; Raymond Shook, treasurer; Larry Wooton, secretary; Max Newlin, vice-president; Victor Nysewander, president; and Mr. Grosskreutz, advisor.



The White Lick Valley chapter of Future Farmers has an active membership of sixteen vocational agriculture students, each an integral cog in the function of the organization. The objects of the activities are to promote wholesome recreation, thrift, establishment in productive enterprise, scholarship, and to sponsor community activities.

Participation in the organization is year round, with activities adapted to the summer interum as well as during the school year.



F.F.A. MEMBERS ARE (BACK ROW) Victor Nysewander, Dick Heald, Ted McDaniel, Larry Wooton, Ronnie Lumpkin, Delbert Mitchell, Max Newlin. (FRONT ROW) Bob Heald, Raymond Shook, Willis Pope, Paul Chandler, Walter Martin, Manford Nickerson, and Ottis Holland.



## Musical background



BAND MEMBERS ARE (BACK ROW, STANDING) Mr. Littlejohn, director; L. Storms, J. Wittorff, E. Swarn, Castle, B. Heald, L. English, C. Truax, E. Kellum, C. Swarn, D. Templeton, S. Page, S. Bayliff, L. Cagle, J. Boles, E. Gannon, D. Stafford, M. Storms, A. Newlin, J. Copeland, D. Carter, C. Musgrave, Edmondson, M. Newlin. (SECOND ROW) C. Skolaut, A. Turner, A. Stanley, D. Heald, A. Arden, K. ROW) T. Bally, B. Schultz, T. Anderson, M. Ross, J. Blair, S. Sims, P. Tompkins, M. Casttetter, E. ston.



BAND OFFICERS (SHOWN ABOVE) ARE (BACK ROW) Chance Musgrave, librarian; Sidney Jenkel, librarian; Beth Hadley, librarian; Emma Swarn, treasurer; David Gorman, drum major, (FRONT ROW) Vicki Johnston, librarian; Terry Bally, librarian; Lynda Leech, secretary; Max Newlin, vice-president; Richard Swarn, president; and Mr. Littlejohn, director.



## for P.H.S.!



J. Groninger, J. Lease, C. Walker, majorettes; D. Gorman, drum major; V. Nysewander, D. Heald, H. Swarn, N. Leech, F. Babb. (THIRD ROW) M. Newlin, J. Simmonds, M. Andis, S. Starbuck, D. Newlin, N. Vickers, B. J. Stanley, J. Castleman, M. Sweet, B. Cagle, M. Musgrave, B. Riddle, R. Agan, D. Hardin, J. Svendsen, J. Jenkle, J. Winstead, J. Burns, R. Swarn, T. Schendel, R. Gribble, S. Jenkle, J. Humphrey, D. Cooper. (FIRST ROW) Heald, K. Kellum, B. Hodson, M. Skolout, D. Heath, N. Alexander, L. Walls, J. Praay, N. Arden, and V. John-

From the combined efforts and talent of director Mr. Littlejohn and seventy-two amateur musicians come the P.H.S. band, the Pep Band, and the various trios, quartets, duets and soloists which entertain the student body and the community.

At right are the strutters who lead the Pep Band at football and basketball games. They are (kneeling) Connie Walker. (STANDING) Judy Wittorff, Janice Lease, Judy Groninger, David Gorman, Emma Swarn, Janice Craige, and Linda Storms.





# Chorus and Ensembles



CHORUS MEMBERS ARE (BACK ROW, LEFT TO RIGHT) Joe Baldwin, Jim Pettit, Fred Goff, Harry Swarn, Mike Slaughter, Jerry Edmondson, Don Sharer, Max Newlin, Gordon Martin. (THIRD ROW) Donna Adamson, Joan Bailey, Marty Castetter, Marcia Fields, Becky Burkhalter, Rosemary Wooley, Forest Bennett, (SECOND ROW) Nan Getchell, Judy Hoffman, Jackie Weddle, Kathy Dunigan, Sandy Leach, Judy Misner. (FIRST ROW) Mr. Metcalf, director, Judy Jones, Marilyn Sharp, Diana Campbell, Jill White, Kathy Ziegler, Marsha Skorjanc, and Mary Margaret Arnold, accompanist.



THE ENSEMBLE MEMBERS ARE (BACK ROW) Marty Castetter, Joe Baldwin, Jim Pettit, Harry Swarn, Mike Slaughter, Jerry Edmondson, Don Sharer, Max Newlin, Kathy Dunigan. (FRONT ROW) Mr. Metcalf, Nan Getchell, Judy Jones, Marilyn Sharp, Diana Campbell, Marcia Fields, Jim White, Becky Burkhalter, Judy Misner, Sandy Leach, and Mary Margaret Arnold.



OCTET MEMBERS ARE Mr. Metcalf, director, Joe Baldwin, Mike Slaughter, Max Newlin, Mary Arnold, Judy Jones, Marcia Fields, Judy Misner, and Marty Castetter.

The Plainfield High School vocal music department, directed by Mr. R. Metcalf, has flourished in the past three years. At Christmas the group presents a program of Christmas music which is inspiring and beautiful.

The Ensemble, consisting of chosen Chorus members, sings at various public and private meetings, as does the Octet, which is also chosen from the Chorus. In 1958 and in 1959 the Ensemble won a first-place rating at both District and State music contests.



# Junior Classical League



J.C.L. MEMBERS ARE (BACK ROW) Harry Swarn, Eddie Cook, Darryl Miracle, Richard Gribble, Rob Sharer, Mike Slaughter, Bob Karpel, Bob Stafford, Don Stafford, David Gorman, Richard Swarn. (THIRD ROW) Ronnie Gribble, Larry Svendson, Ronald Ray, Bill Wise, Ronnie Keck, David Davis, Jack Nichols, Robbie Finchum, Jerry Folley. (SECOND ROW) Carolyn Leech, Mary Arnold, Judy Engel, Mary Ellen Brunson, Janice Lease, Emma Swarn, Betty Killman, Janice Craige. (FIRST ROW) Judy Wittorff, Virginia Roth, Faith Friel, Karen Neal, Beverly Hartgraves, and Peggy Happell.

Membership in the Junior Classical League indicates a desire to "hand on the torch of classical civilization to the modern world." This aim is accomplished through meetings at which Latin orations, Latin films, and Latin songs are utilized.

The officers of J.C.L. are shown below. THEY ARE Emma Swarn, treasurer; Peggy Happell, secretary; Miss Newlin, sponsor; Larry Svendson, vice-president; and Ronnie Keck, president.









# *Student Life*

Fall is the time of year when student life is at its peak--football games, meetings, classes, dances, new clothes, parties, and of course romances. New couples and "old steadies" stroll hand-in-hand in school and out, a symbol of one of the most important facets of student life.



## *The Class of '59 gave a wonderful*



Class president, Don Sharer, welcomed the outgoing seniors at the pre-dance dinner. Others shown at the speakers' table are Beth Hadley, Mike Musgrave, (toastmaster,) and Mrs. Robert Garvue. The reception was held Friday evening, May 23, 1958, in the Indianapolis Medical Center.



Members of the senior and junior classes enjoyed a full-course dinner in the banquet hall before the dance.



## *reception for the graduating class!*



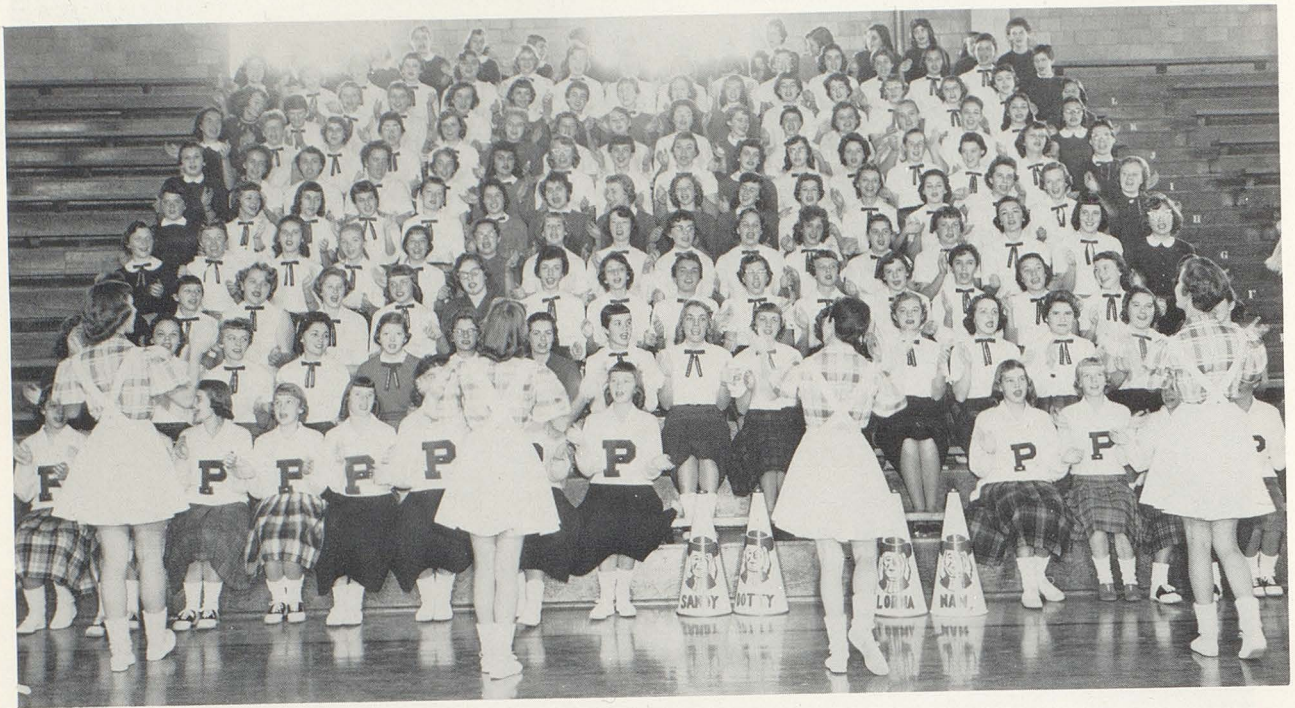
After months of anticipation, the night finally arrived. The beautiful ballroom of the Medical Center was filled with starry-eyed couples who danced the evening away.



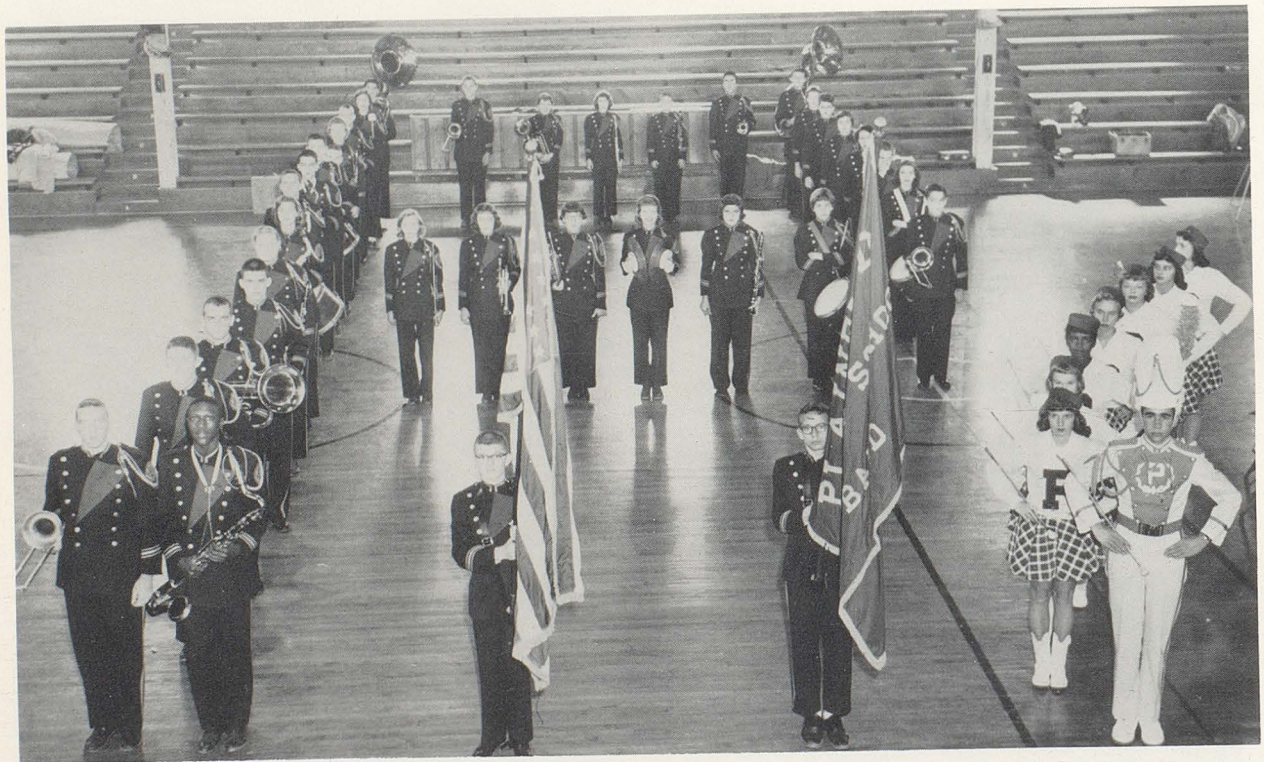
Charlie Bowers' nine-piece band provided a background of wonderfully danceable music.



# Quaker Boosters



Enthusiastic fans in the Quaker cheerblock back the team under the leadership of the cheerleaders. Always ready and willing to boost the team, our cheerblock adds variety and pep to each game.



An added attraction at all home games is our pep band. Halftime performances show original ideas as the band plays the school song, the visitor's school song, and other special musical numbers.



## F.H.A. Fall Prom



Queen Judy



Queen candidates were Judy Pershing, senior; Carolyn Leech, junior; Judy Simmons, sophomore.

The theme of the annual F.H.A. Fall Prom, held this year on November 9, was "The Nautical Ball."



Beneath the glittering fish, couples danced and romanced to the dreamy music of Charlie Bowers' band.



## Homecoming '58

"A Whale of



Princess Bonnie



Queen Nina



Princess Dorothy



# a Victory''

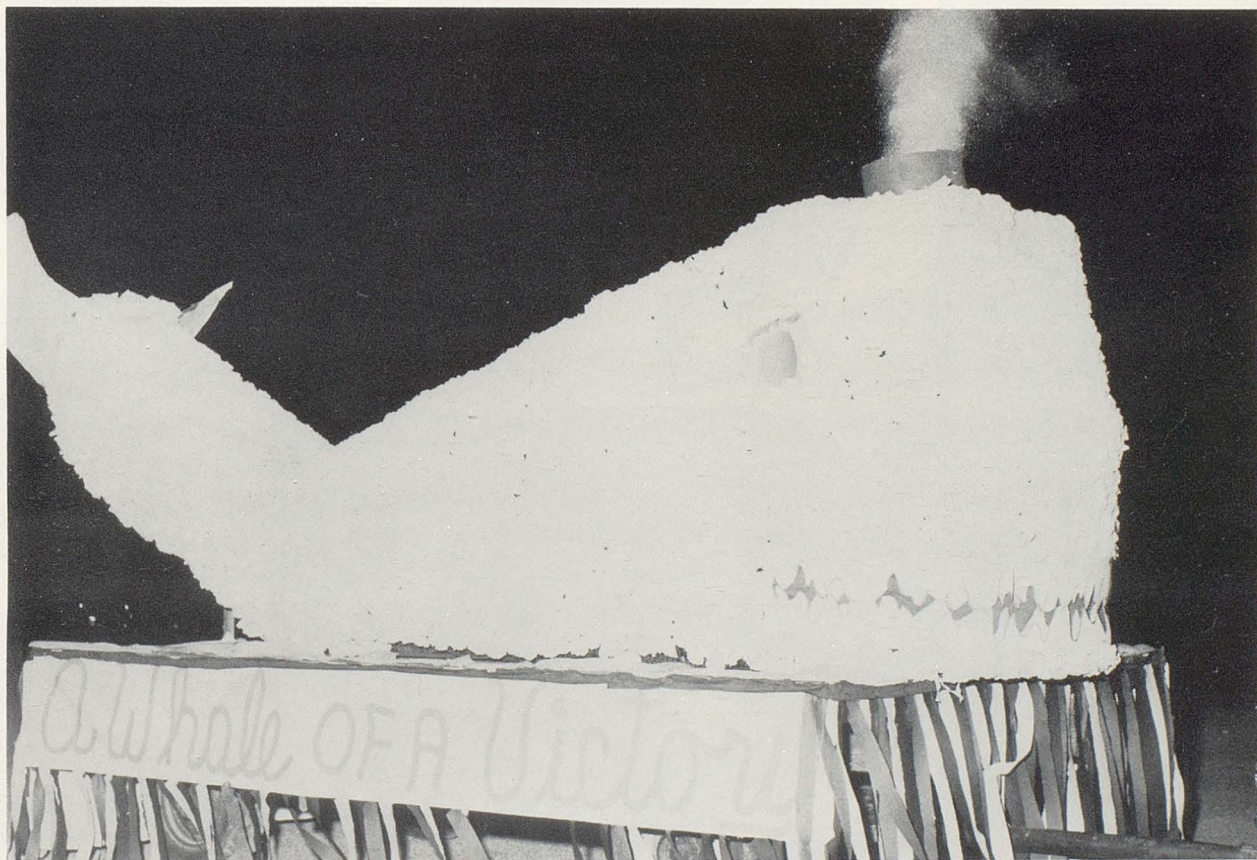


"Scent A Quaker Victory" - Juniors



"Hats Off" - Sophomores

Football Game:  
Plainfield 31 Mooresville 0  
Queen Candidates:  
Bonnie Buis, Sophomore  
Nina Neel, Junior  
Dorothy Oliver, Senior  
Float Winner:  
Class '59 (4th  
Consecutive year)



"A Whale Of A Victory" - Seniors



# Speech Club presented



SPEECH CLUB'S SPRING PLAY  
"DON'T TAKE MY PENNY"

Members of the play cast (in order below) were (seated) Margaret Johnson, Teresa Newlin, Richard Simpson, (standing) Beverly Castleman, Eddie Cook, Sue Jones, Al Turner, Dean Cooper, Sandy Leach, Mike Slaughter, Sue Magee, Bill Bally, Susie Bolen, David Gorman, Kathy Dunigan, Nan Getchell, and Richard Gribble. The play was directed by Mrs. Betty Niles.





## two professional (?) productions



MEMBERS OF THE "GREAT BIG DOORSTEP" CAST ARE Mrs. Niles, director; Lynda Leech, David Gorman, Beth Hadley, Ann Turner, Judy Wittorff, Dean Cooper, Mike Musgrave, Kathy Dunigan, Sue Magee, Kirk Holdcroft, Kathy Kellum, and Bill Wise.



### SPEECH CLUB'S FALL PLAY "THE GREAT BIG DOORSTEP"

(LEFT) "Oh, Mr. Tobin, you're just saying that!" (BETH HADLEY)

(RIGHT) "Hey there, sassy toes!" (MIKE MUSGRAVE and KATHY DUNIGAN)



"Ain't that a pitchuh'! Tryin' to get a pool ball in his mout'" (M. MUSGRAVE, B. HADLEY, S. MAGEE, K. HOLDCROFT, D. COOPER, K. DUNIGAN)





King candidates and their escorts were (LEFT TO RIGHT) Pat Tompkins, Terry Hayden, Jill White, Dean Cooper, Ann Turner and Al Turner.

The F.H.A. sponsors a dance in the spring to which the girls ask the boys and for which they make their corsages. The dance was held at the Public Service Auditorium on April 26. The corsage winners were Nancy Milhous and Darlene Morris, and the lucky boys who sported the corsages were Steve Morrison and Dick Heald.

## W.P.A. Dance



Dick Calbert, senior, was crowned King by his escort Dianne Rushton.



Thanks to a skillful decorating committee, suspended Japanese lanterns provided a mysterious Oriental theme for the 1958 W.P.A.

The dancing couples enjoyed also the music of Ray Edwards' band.



# Students Honor Retiring Teacher



Mrs. Jessup, (ABOVE), admires some of the many flowers sent to honor her on the memorable occasion.

One of the outstanding events of the year was the honoring of Mrs. Beryl Sanderson Jessup, a P.H.S. teacher for forty-seven years, who retired in December, 1958.

At a reception sponsored by the Future Teachers Club, girlhood classmates and friends, former students and teachers, and present patrons of the school expressed their appreciation for Mrs. Jessup's years of service and loyalty to the Plainfield schools.



(ABOVE) Mr. Albert Jessup, present Plainfield School Board member, and Miss Mary Jessup, Indianapolis, reminisce with Mrs. Donald Jessup at the reception. Mr. Jessup and Miss Jessup were students in the latter's first class in 1911.



The people pictured (above) were students in Mrs. Jessup's classes from 1914-1916. They are (LEFT TO RIGHT) Mary Jamison, Gertrude Garrett, Harry Spears, and to Mrs. Jessup's left, Mary Hagee, Plainfield elementary teacher.



Many family members have "shared" Mrs. Jessup's teaching, but the (above) picture shows three generations of the same family who have studied under her. To Mrs. Jessup's left, are Mrs. Joseph Lease, Sr., Joseph Lease, Jr., and Janice Lease, P.H.S. junior.



# Senior Baby Pictures



D. Alfred



E. Babb



J. Baldwin



P. Barnett



S. Bauer



J. Blanton



H. Cain



M. Chilcote



B. Clark



N. Coopridger



C. Corcoran



W. Creekbaum



N. Culver



N. Davies



J. Dickinson



B. Dowell



K. Dunigan



J. Edmondson



L. English



C. Fields



D. Firkins



C. Foggatt



F. Goff



R. Gribble



B. Hadley



D. Hathaway



D. Heald



J. Higgins



J. Hobbs



K. Holdcroft



M. Johnson



D. Jones



B. Jones



J. Jones



S. & A. Klingensmith





P. Krebs



D. Kyle



S. Leach



L. Leech



J. Kelso



E. Littlehale &  
R. Richardson



S. Magee



S. Marshall



M. Marlowe



D. Martin



P. Mays



P. Meyer



N. Milhous



J. Misner



D. Mitchell



S. Morrison



M. Muncy



M. Musgrave



L. Newby



M. Newlin



T. Newlin



V. Nysewander



D. Oliver



J. Overby



J. Pershing



A. Robinson



L. Rushton



J. Sanford



C. Scholl



B. Schultz



D. Sharer



H. Sheets



R. Simpson



S. Sims



M. Skorjanc



L. Smock



C. Snodgrass



L. Stanley



J. Trucks



A. Turner



D. Whited

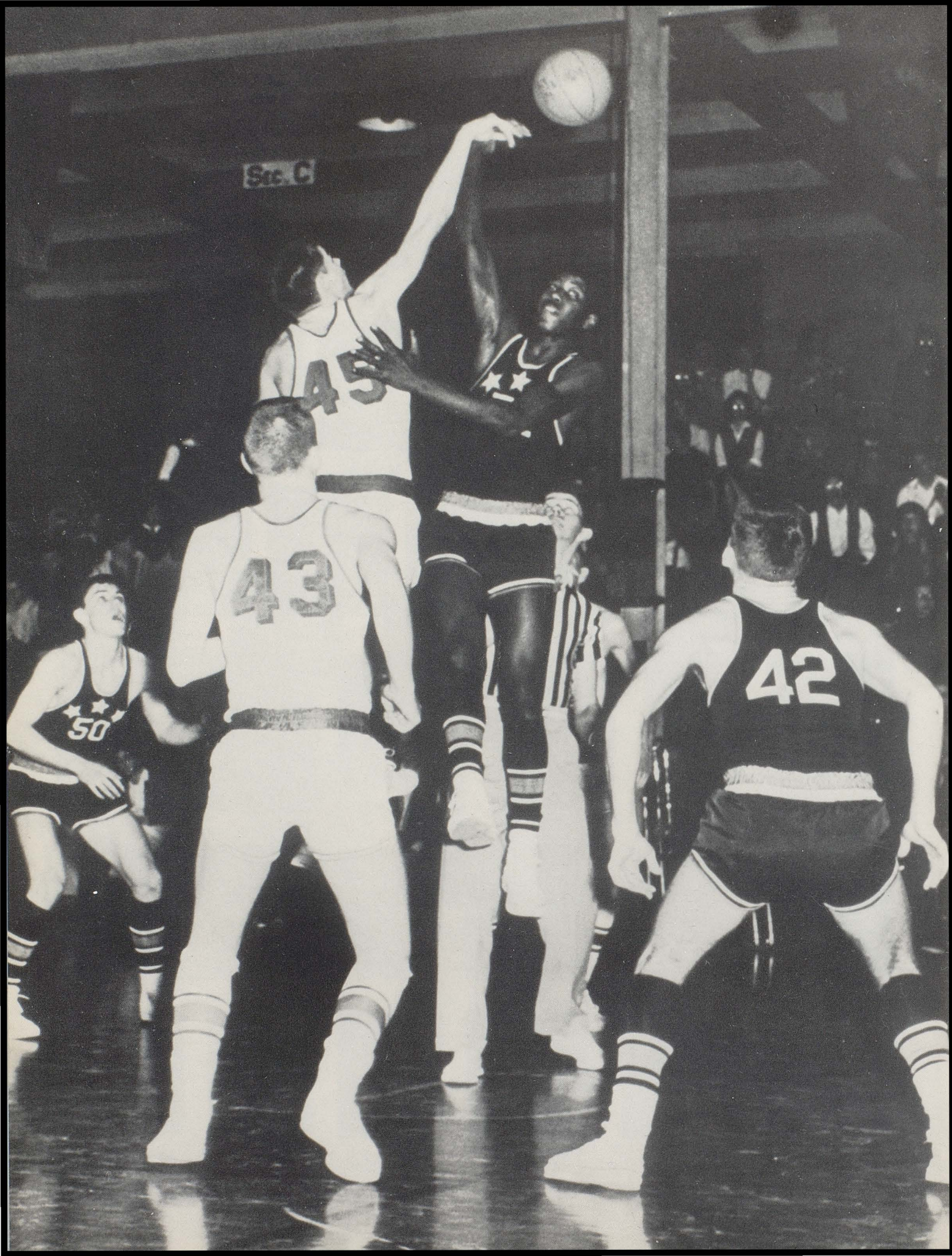


H. Wingler



L. Wootton







# Sports

Basketball is truly a "fever"--in Plainfield as in all of Indiana. However, it is only one of the many sports, valuable and entertaining, which are played throughout the year.

The tip-off is the signal for an exciting game to begin. At the Glenn game, Plainfield player Jack Hobbs (45) outjumps a tall Glenn player as Mason Meeks (43) waits for the action to begin. The final score, 61-53 (Plainfield, of course!)





Members of the varsity football team are: FRONT ROW LEFT TO RIGHT: L. Svendsen, J. Copeland, D. Carter, J. Nichols, SECOND ROW: J. Edmundson, J. Cummings, H. Kern, D. Sharer, W. Wise, J. Pope, P. Krebs, D. Pope, S. Harlan, C. Castetter, T. Raper, W. Creekbaum. THIRD ROW: S. Shadwick, H. Cain, M. Earhart, A. Turner, J. Hardin, M. Newlin, B. Raper, S. Swan, J. Lynch, J. Baldwin, Coach Combs. FOURTH ROW: (Cheerleaders) D. Barnaby, L. Rushton, S. Leach, and N. Getchell. (Players) R. Trusty, R. Sharer, M. Meeks, B. Andrews, J. Mullican, D. Alfred, J. Hobbs, J. Pettit, Coach Albright.



Coaches Albright (left) and Combs (right) talk shop with captain Don Sharer. Don, a fullback, added much to the team by his determination and running ability.





## FOOTBALL SCHEDULE

Opponent	Plainfield Score	Opponents Score
Decatur Central	7	13
Edinburg	19	7
Greencastle	7	13
Brownsburg	7	12
Center Grove	26	0
Danville	39	6
Greenfield	32	6
Mooresville	31	0
Speedway	32	7
W Kirklin	35	0

## Football

Senior Captain Don Sharer





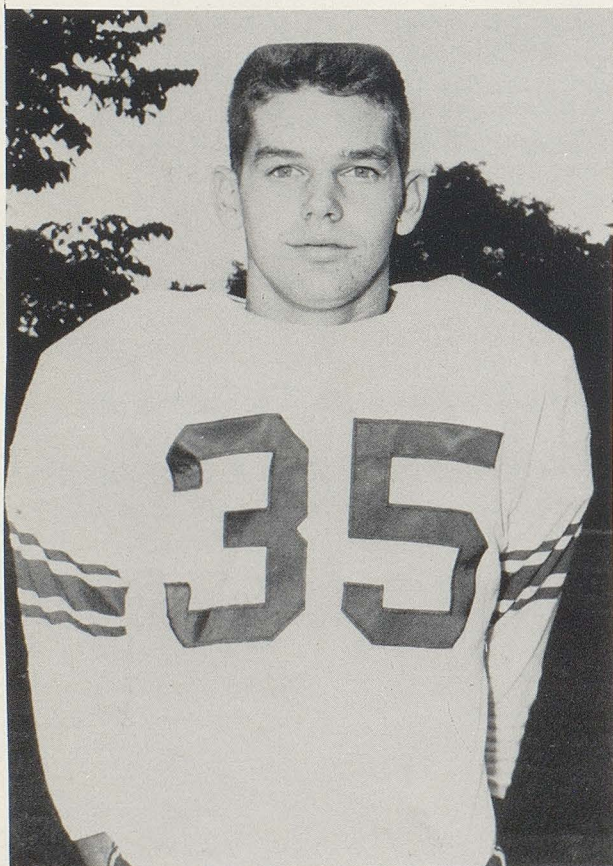
*Senior football players are an*



David Alfred, End



Joe Baldwin, Halfback



Jack Hobbs, End



Paul Krebs, Quarterback



*important part of any team*



Herb Cain, End



Walter Creekbaum, Guard



Max Newlin, Guard



Al Turner, Guard



## B-Team Football



MEMBERS OF THE B-TEAM FOOTBALL SQUAD ARE (LEFT TO RIGHT, BACK ROW) Mr. Combs, (assistant coach), H. Newlin, B. Cadwell, N. Cassell, J. Edmondson, J. Mullican, M. Earhart, M. Sullivan, D. Agan, P. Trusty, Mr. Albright (coach). (FIRST ROW) M. Switzer, J. Humphrey, C. Castetter, T. Raper, J. Webster, B. Wise, C. Swarn, B. Skorjanc, J. Thomas, J. Cummings, K. Ward.



Scott Shadwick tackles a tough Decatur Central player.



Jon Pope runs for a touchdown on the new Decatur Central field.



A Decatur "Hawk" successfully tackles a Quaker player.



Paul Krebs successfully evades a tackle.



# Varsity cheerleaders



NAN GETCHELL, Senior  
Cheerleader two years.



Cheerleaders back the team on the home floor.



DOROTHY BARNABY, Junior  
Cheerleader three years.



LORNA RUSHTON, Senior  
Cheerleader two years.



Yell leaders lead the parade on Homecoming night.



SANDY LEACH, Senior  
Cheerleader four years.



## B-team Cheerleaders



B-Team Cheerleaders conclude an evening's practice with one of their gymnastic formations.



PATTY CLAXTON, Junior



VICKI JOHNSTON, Sophomore



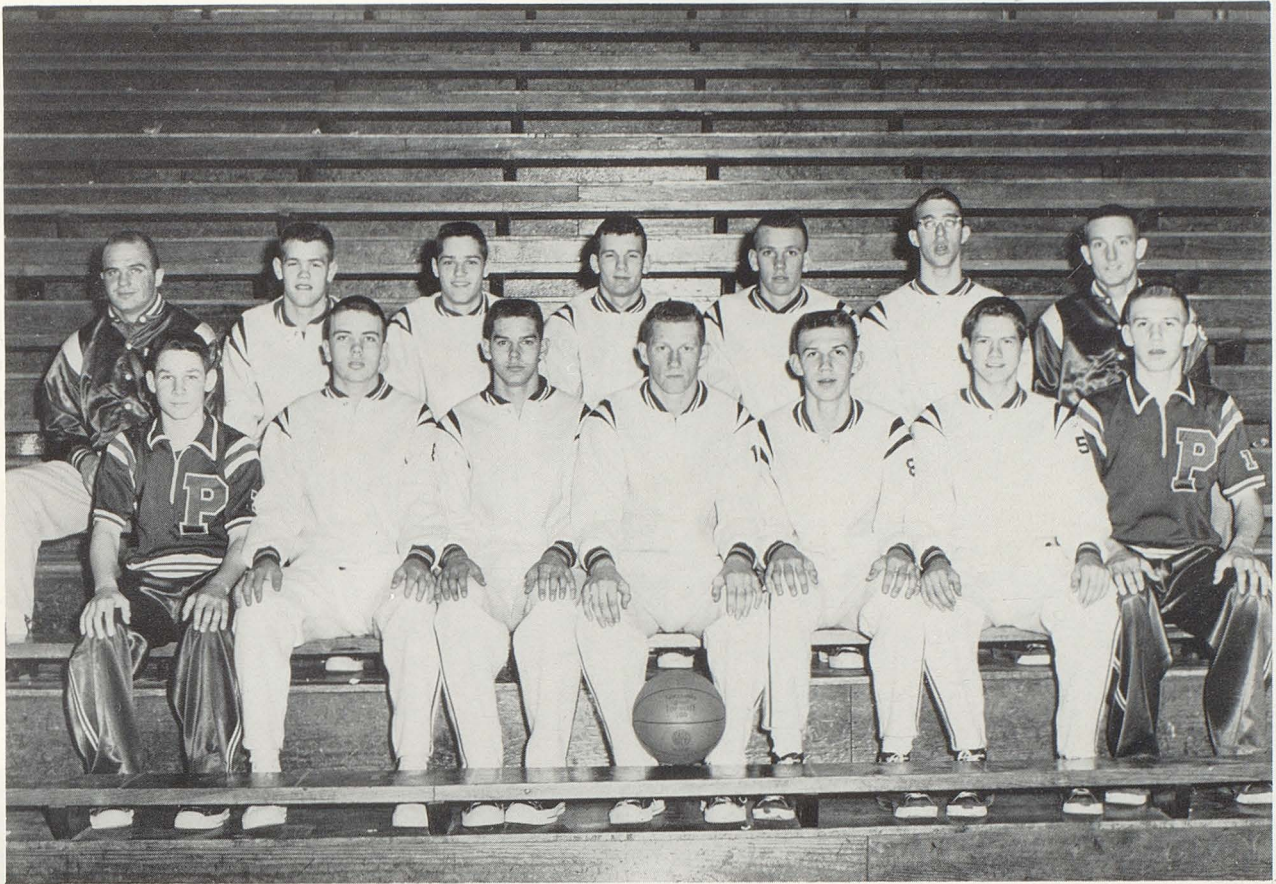
KATHY KELLUM, Sophomore



KAY WELCH, Sophomore



# Varsity Basketball



MEMBERS OF THE VARSITY BASKETBALL SQUAD ARE (LEFT TO RIGHT, BACK ROW) Mr. Combs (assistant coach), Don Pope, Steve Harlan, Jon Pope, Mason Meeks, Bill Bally, Mr. Toon (coach). (FRONT ROW) Carl Castetter, Bill Decker, Jack Hobbs, Herb Cain, Larry Ferrell, Darryl Miracle, Jerry Ferrell.

## SCHEDULE

WE		THEY
57	Zionsville	61
63	Speedway	55
69	Clayton	46
55	Avon	51
62	Greencastle	55
55	Greenwood	57
56	Center Grove	41
81	Decatur Central	60
37	Mooresville	29
62	Brownsburg	64
62	Wiley	66
57	Spencer	71
75	Danville	54
47	Wood	48
61	Glenn	53
74	Ben Davis	81
61	Avon	54
	Pike Township	



COACH HEROD TOON

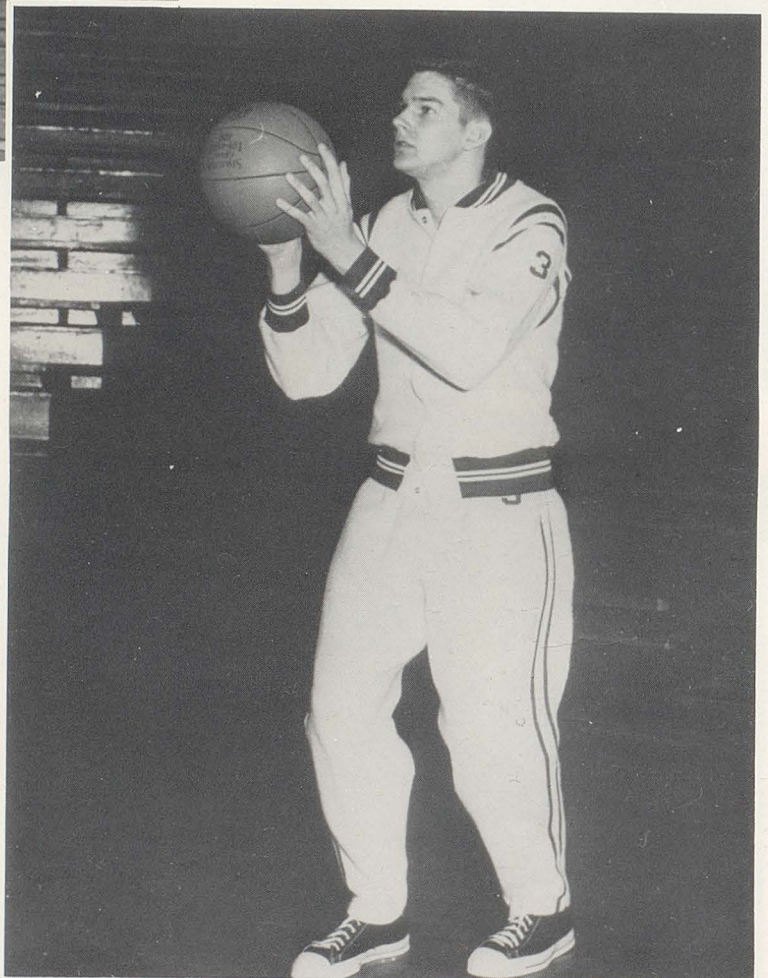




HERB CAIN, Center

Only two seniors finished their high school basketball careers in 1959. Herb Cain and Jack Hobbs, both over six feet in height, added much to the team during their four years in playing ability and team spirit. Although others will replace them on the team, they will be missed by all P.H.S. booster.

## Senior Basketball Players



JACK HOBBS, Center



## B-Team Basketball



MEMBERS OF THE B-TEAM BASKETBALL TEAM ARE (LEFT TO RIGHT, BACK ROW) Mr. Combs (assistant coach), Paul Ashworth, Jim Edmondson, Mike Earhart, Charles Greene, Terry Hayden, Mr. Toon (Coach). (FRONT ROW) Chance Musgrave, Nicky Kellum, Dick Hardin, Jimmy Cummings, Harris Newlin, Norman Cassel.



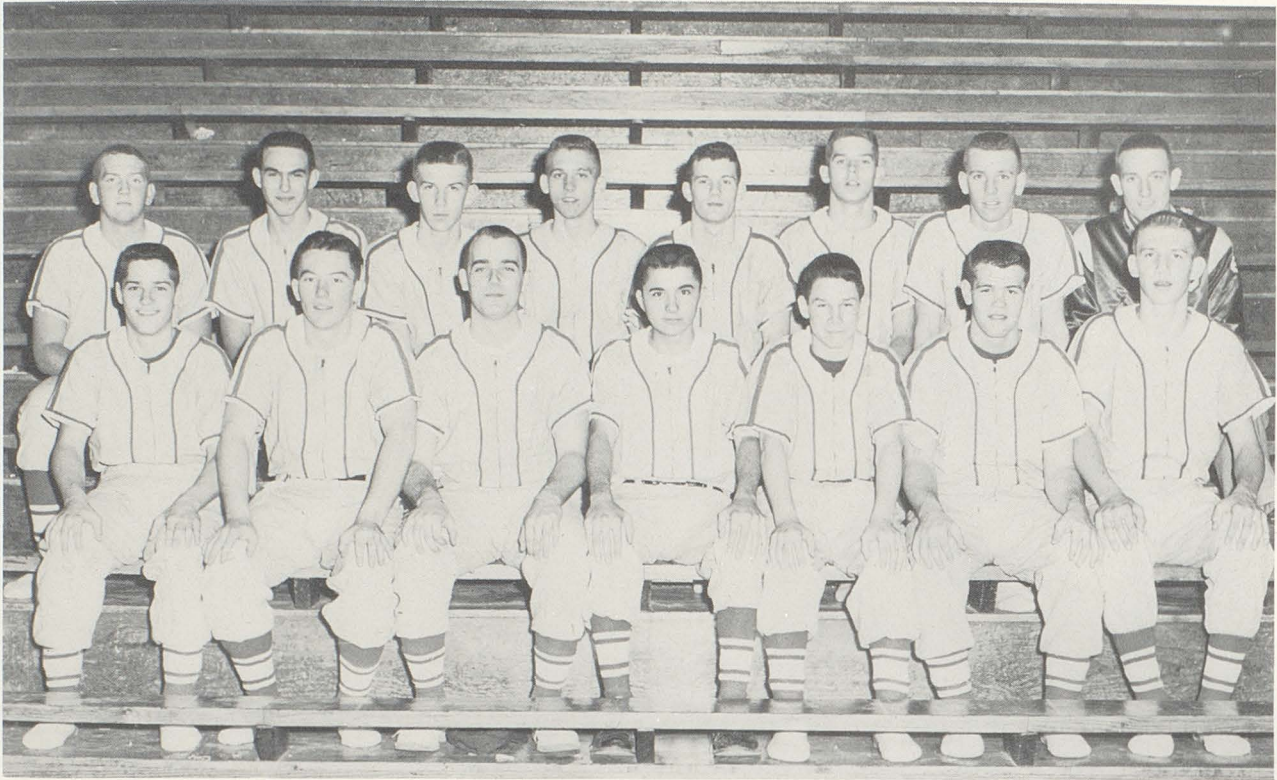
MANAGERS FOR THE VARSITY AND B-TEAM BASKETBALL TEAM ARE: Larry Svendson, Jackie Nichols, and David Carter.

### SCHEDULE

WE		THEY
30	Zionsville	56
34	Speedway	19
35	Clayton	22
55	Avon	40
40	Greencastle	24
36	Greenwood	24
34	Center Grove	46
55	Decatur Central	26
44	Mooresville	29
44	Brownsburg	39
42	Wiley	46
39	Spencer	26
45	Danville	24
16	Wood	30
36	Glenn	47
36	Ben Davis	54
51	Avon	31
	Pike Township	

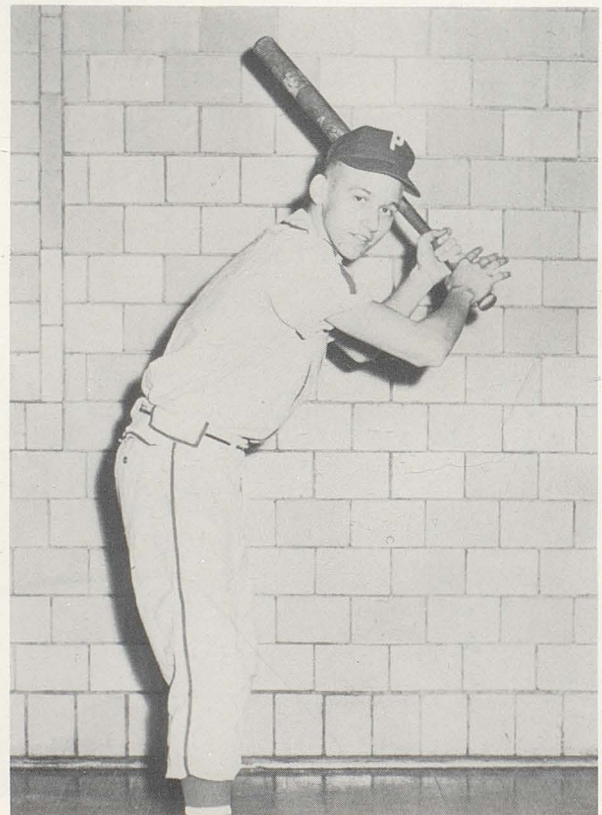


# Baseball team loses five



MEMBERS OF THE BASEBALL TEAM ARE (LEFT TO RIGHT, BACK ROW) Max Newlin, Ed Wade, Larry Ferrell, Jerry Svendsen, Jon Pope, Jack Hobbs, Mason Meeks, Mr. Toon (coach). (FRONT ROW) Steve Harlan, Joe Baldwin, Mike Musgrave, Ronnie Keck, Carl Castetter, Don Pope, Jerry Ferrell.

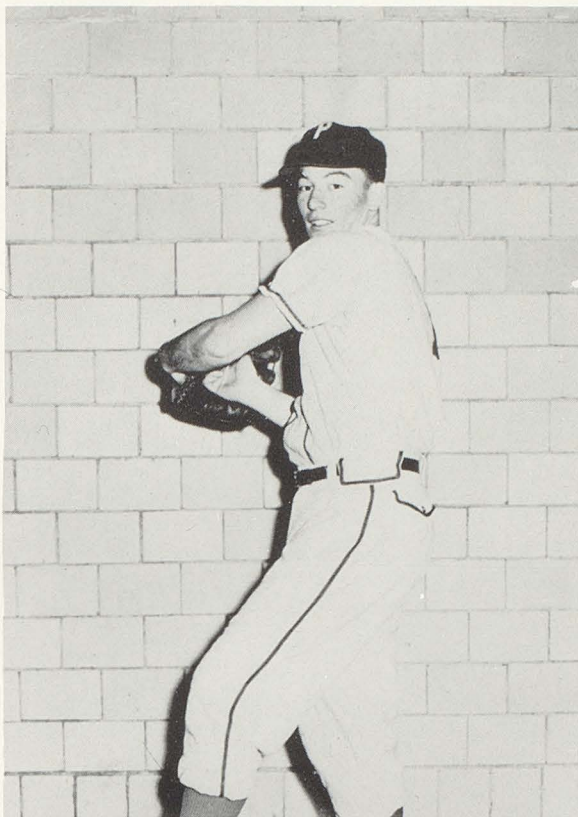
<u>SCHEDULE</u>		
April 14	Greenwood	H
17	Brownsburg	T
21	Danville	T
23	Speedway	H
29	Decatur Central	H
May 1	Washington	T
5	Mooreville	T
7	Center Grove	H
11	Zionsville	T
14	Bloomington	T



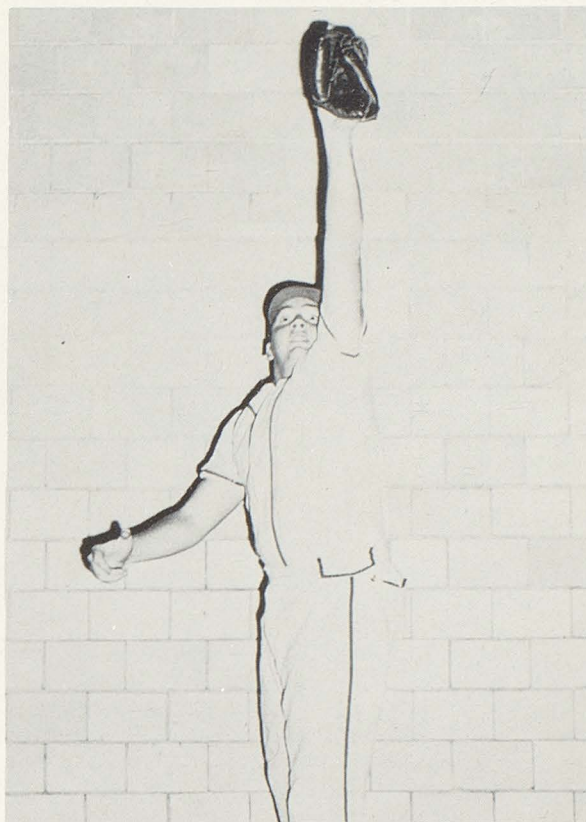
An all-around team man, Senior Jerry Svendsen adds much encouragement and spirit.



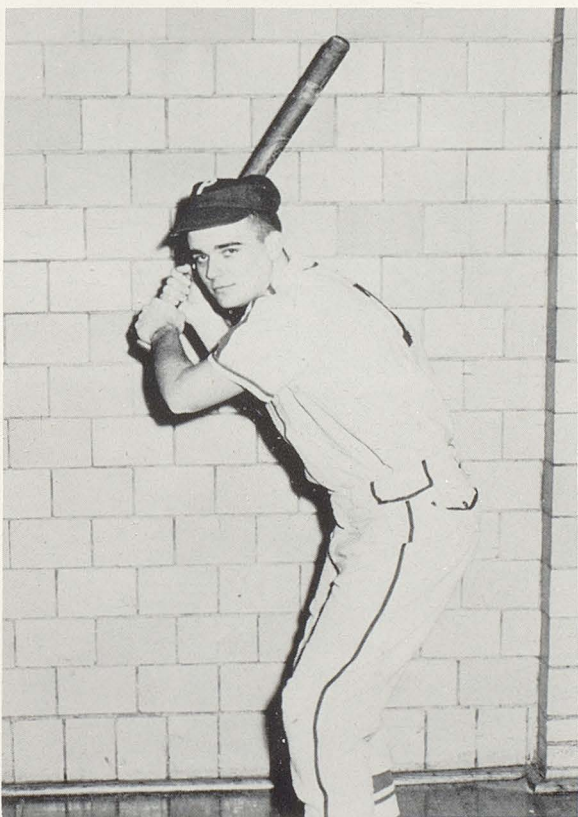
## *championship senior players.*



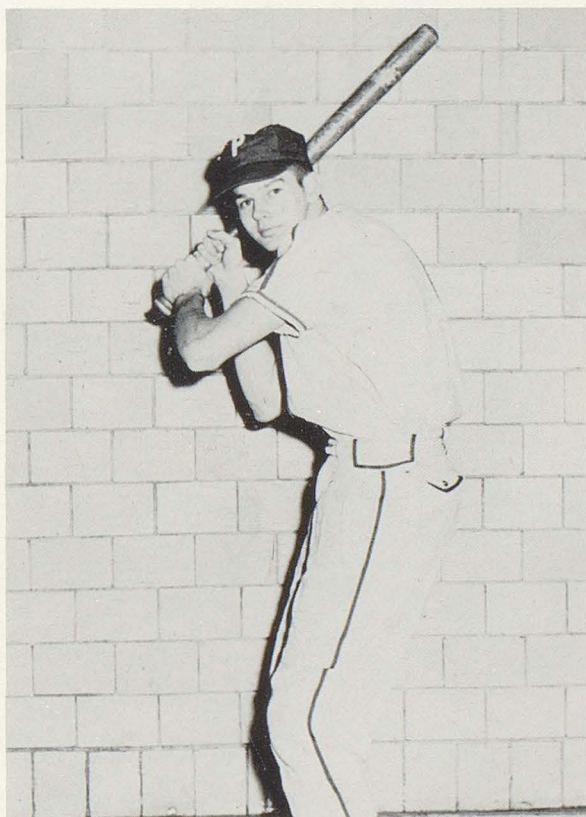
Joe Baldwin is one of the best on our pitching staff and is an important team member.



Max Newlin, always ready with a joke to encourage the team, plays with great determination.



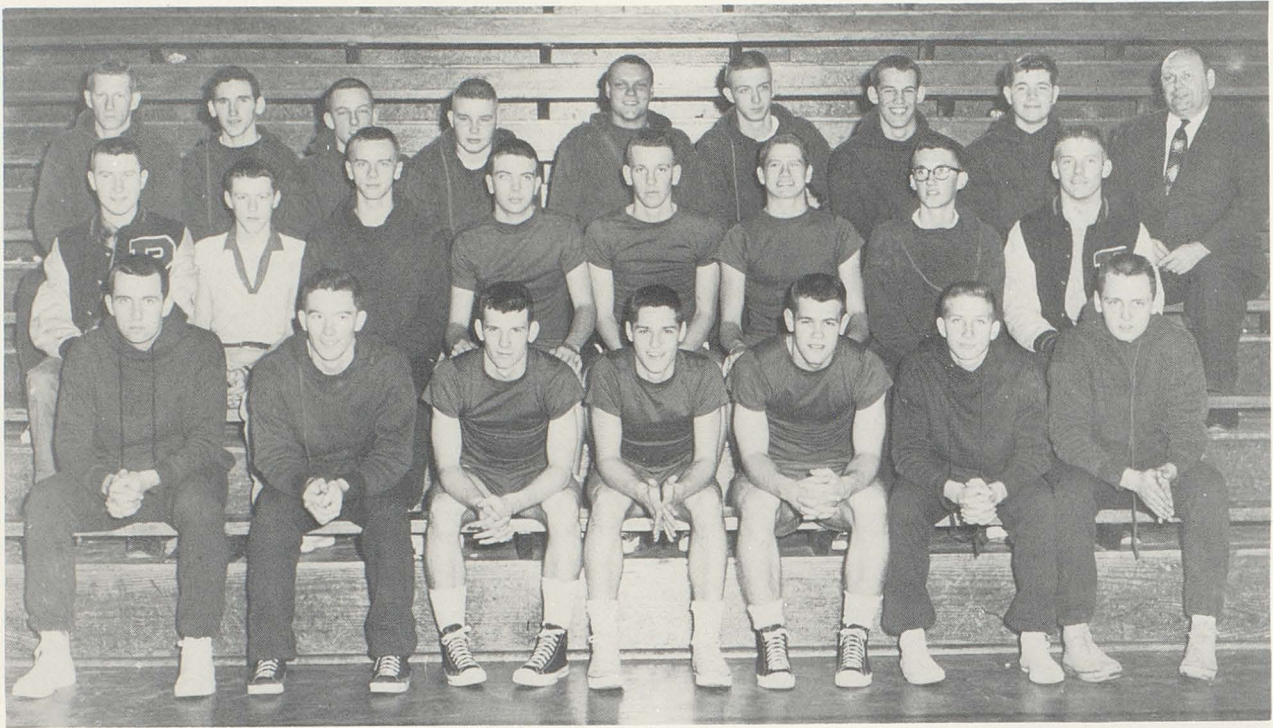
Mike Musgrave swings a big bat while warming up for a season's play.



Rugged at the plate or on the mound, Jack Hobbs prepares for a swing while practicing to meet one of our tough competitors.



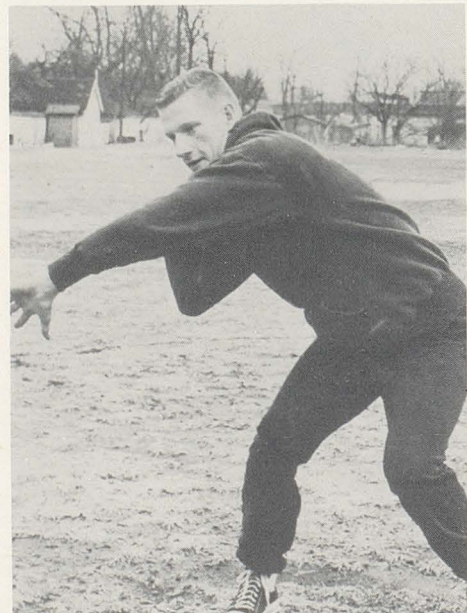
## Track team loses



TRACK TEAM SEATED (LEFT TO RIGHT, BACK ROW) ARE Herb Cain, Don Firkins, Richard Trusty, Harry Kern, Jim Pettit, Bill Andrews, Jack DePriest, John Lynch, Mr. Albright (coach). (SECOND ROW) John Cope-land, Jack Nichols (managers), Don Sharer, Bill Decker, Mason Meeks, Darryl Miracle, Charles Foggatt, Al Turner. (FRONT ROW) Dave Alfred, Joe Baldwin, Jon Pope, Steve Harlan, Don Pope, Paul Krebs, Don Hath-away.



Senior Dave Alfred, high & low hurdles



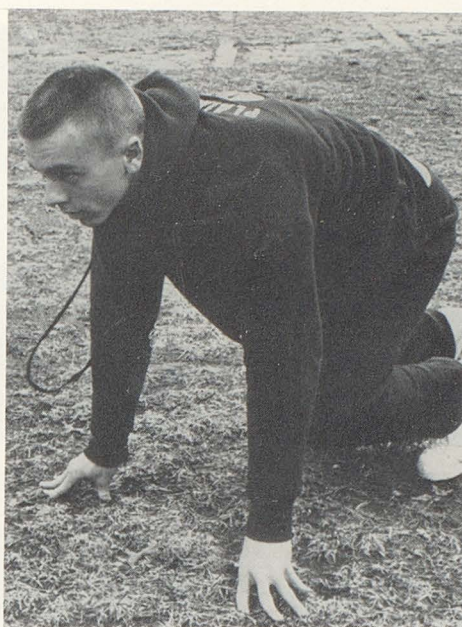
Senior Herb Cain, Shot-put



## eight valuable senior members



DON FIRKINS, dash



DON SHARER, distance, relay



PAUL KREBS, distance



JOE BALDWIN, dash



CHARLES FOGGATT, distance



DON HATHAWAY, distance

### PLAINFIELD HIGH SCHOOL VARSITY TRACK RECORDS

EVENT	NAME	TIME	DISTANCE	YEAR
100	Ward-Calbert	:10.3		1954-1958
220	Ward	:23		1954
440	Reece	:53		1952
880	Phillips	2:02.2		1955
Mile	Phillips	4:35		1954
L.H.	Templeton	:22		1957
H.H.	Miracle	:15.6		1958
P.V.	Cokain		11' 6 1/2"	1957
B.J.	Bryant		20' 8 1/2"	1942
H.J.	Benslay		5' 7 1/2"	1958
S.P.	Weber		51' 9"	1937
Mile Relay	Phillips-Crawley	3:41.9		1955
	Arnold-Gladden			
1/2 Mile Relay	Calbert-Sharer	1:37.5		1958
	Templeton-Baker			



# Sports Snaps



Plainfield vs. Decatur



Plainfield vs. Decatur



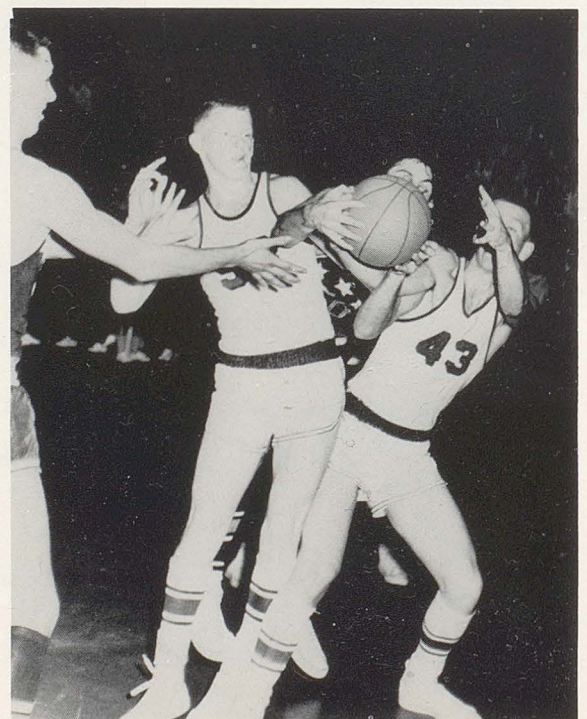
Plainfield vs. Glenn



Plainfield vs. Decatur



Plainfield vs. Glenn



Plainfield vs. Glenn



## Senior Activities Continued

### LYNDA KAY LEECH

G.A.A. 1, 2, 3, 4; Band 1, 2, 3, 4, Secretary 2, 4; Pep Band 1, 2, 3; Honor Society 3, 4; QUAKER SHAKER Staff 4; SILHOUETTES Staff 4; F.T.A. 2, 3, 4; Cheerblock 4; Pep Club 4; Speech Club 3, 4, Vice-President 4; "The Little Dog Laughed" 3; "The Great Big Doorstep" 4; Traveling Quakers 3.

### SUE ELLEN MAGEE

District Historian 2, District Editor 3, Vice-President 4; G.A.A. 1, 2, 3, 4; Speech Club 3, 4; "Don't Take My Penny" 3; "The Great Big Doorstep" 4; Cheerblock 1, 2; Pep Club 3, 4; Girls' State 3; Honor Society 4; SILHOUETTES Staff 3.

### JUDITH ANN MISNER

Chorus 1, 2, 3, 4, Librarian 2; Ensemble 2, 3, 4; "Annie Get Your Gun" 2; "Girl Crazy" 3; Cheerblock 1, 2; Pep Club 3, 4; Traveling Quakers 3; SILHOUETTES Staff 3; Speech Club 2, 3.

### JOHN MICHAEL MUSGRAVE

Track 1; Class Vice-President 1; Student Council 1, 4, President 4; Speech Club 4; Honor Society 3, 4, Vice-President 3; Pep Band 1, 3, 4; QUAKER SHAKER Staff 3, 4; SILHOUETTES Staff 4; "The Great Big Doorstep" 4; Athletic Council 4; Science Club 4; B.A.A. 3.

### MAX EDWARD NEWLIN

Secretary 3, Vice-President 4; Band 1, 2, 3, 4, Vice-President 4; Chorus 4; Ensemble 4; Cheerblock 2; Student Council 3.

### TERESA ELIZABETH NEWLIN

Recording Secretary 2; F.T.A. 3, 4; J.C.L. 2; Band 1, 2, 3; Speech Club 3, 4; Honor Society 3, 4; QUAKER SHAKER Staff 3, 4; Co-Assistant Editor 3, Co-Editor 4; Cheerblock 1, 2; Pep Club 3, 4; "Don't Take My Penny" 3; "The Little Dog Laughed" 3.

### RONALD DALE RICHARDSON

Basketball 1; B.A.A. 2, 3; Cheerblock 1, 2, 3; Class President 2.

### MARY MARGARET SAXON

Wheelus High School, Tripola, Libya 2; Dayton, Ohio, High School 3; Plainfield High School 4; F.T.A. 4; S.S.S. 4; Honor Society 4, Secretary 4; F.H.A. 4; Pep Club 4.

### CLAUDIA ANN SCHOLL

Honor Society 3, 4; Chorus 1, 2; Speech Club 3, 4; Cheerblock 1, 2, 3, 4; Pep Club 3, 4; Girls' State 3; "The Little Dog Laughed" 3; QUAKER SHAKER Staff 4; SILHOUETTES Staff 4; "Annie Get Your Gun" 2; D.A.R. Award 4.

### BEVERLY ANN SCHULTZ

G.A.A. 1, 2; F.H.A. 2; Chorus 1, 2, 3; "Annie Get Your Gun" 2; "Girl Crazy" 3; Pep Club 3, 4; Cheerblock 1, 2, 3, 4; Band 1, 2, 3, 4; Speech Club 3, 4.

### DON ALLEN SHARER

Vice-President 2; F.T.A. 3, 4; Speech Club 3, 4; Science Club 1, 2; J.C.L. 2, 3; Basketball 1; Track 1, 2, 3, 4; Football 1, 2, 3,

4, Captain 4; Cheerblock 1, 2; Chorus 1, 3, 4; Ensemble 3, 4; Honor Society 4.

### RICHARD LEE SIMPSON

"Don't Take My Penny" 3; "Girl Crazy" 3; Band 2; Science Club 3, 4; Cheerblock 2, 3.

### SHARON LOU SIMS

Vice-President 3; F.T.A. 3, 4; Band 1, 2, 3, 4, Librarian 1; Cheerblock 1, 2, 3, 4; Pep Club 3, 4; Traveling Quakers 3.

### MARSHA DEE SKORJANC

Cheerblock 1, 2, 3, 4; Cheerleader 1, 2, 3; Chorus 2, 3, 4; Girls' Glee Club 1; Speech Club 3; Traveling Quakers 3.

### LINDA KAY SMOCK

Speech Club 3, 4, Secretary 3; Cheerblock 1, 2, 3, 4; Pep Club 3, 4; J.C.L. 2; Cheerleader 1, 2; "Annie Get Your Gun" 2; Chorus 1, 2; Band 1, 2, 3, 4.

### HARRY EDGAR SWARN

Chorus 1, 2, 3, 4; Ensemble 3, 4; Student Council 2, 4, Vice-President 2.

### ANN PAULINE TURNER

Student Council 3; Honor Society 3, 4; Cheerleader 1, 2, 3; Cheerblock 4; Pep Club 4; Band 1, 2, 3, 4; Speech Club 3, 4; "The Great Big Doorstep" 4.

### CHARLES ALFRED TURNER

B.A.A. 2, 3, Vice-President 3; Speech Club 3, 4; Cheerblock 1, 2, 3; 2 Plays 3.



# Index

## SENIORS

Acton, Hilton 21  
 Adamson, Lois 21  
 Alfred, David 21, 76, 78  
 Babb, Elaine 21, 49, 51  
 Baldwin, Joe 21, 44, 58, 76, 78, 86, 87, 89  
 Barnett, Paul 21  
 Bartley, Richard 21  
 Bauer, Sylvia 21, 43, 45, 49, 50, 51  
 Cain, Herbert 21, 76, 79, 83, 84  
 Chilcote, Marilyn 21  
 Clark, Robert 21, 45, 54  
 Coopridger, Nancy 21, 49, 53  
 Corcoran, Carolyn 22, 53  
 Creekbaum, Walter 22, 76, 79  
 Culver, Norita 22  
 Davies, Noreen 22, 53  
 Dickinson, Jim 22  
 Dowell, Barbara 22  
 Dunigan, Kathy 12, 22, 42, 45, 47, 49, 58, 68, 69  
 Edmondson, Jerry 22, 45, 47, 54, 58  
 Endicott, Linda 22, 49  
 English, Louise 22, 47, 49, 53  
 Epley, Gary 22  
 Fields, Carol 22, 49  
 Firkins, Don 12, 23, 89  
 Foggatt, Charles 23, 45, 54, 89  
 Getchell, Nan 20, 23, 45, 46, 47, 58, 68, 76, 81  
 Goff, Fred 23, 58  
 Gribble, Richard 23, 43, 47, 59, 68  
 Hadley, Beth 12, 23, 42, 43, 45, 46, 47, 49, 50, 51, 56, 60, 62, 69  
 Hathaway, Don 23, 89  
 Heald, Richard 23, 44, 55  
 Hessler, James 23  
 Higgins, Judy 23, 49, 53  
 Hobbs, Jack 12, 23, 45, 76, 78, 83, 84, 86, 87  
 Holdcroft, Kirk 12, 23, 42, 43, 45, 47, 69  
 Holzknecht, Tom 24  
 Jenkins, Larry 24  
 Johnson, Margaret 24, 42, 45, 46, 47, 50, 51, 53, 68  
 Jones, Donna 24, 49  
 Jones, Fred 24  
 Jones, Judy Ann 24, 49  
 Jones, Judy Lee 24, 53, 58  
 Kelso, Janet 24, 53  
 Klingensmith, Andy 12, 24, 45, 49, 50, 51  
 Klingensmith, Sandy 24, 45, 49, 50, 51  
 Krebs, Paul 24, 54, 76, 78, 80, 89  
 Kyle, Dewayne 24  
 Leach, Sandy 25, 45, 46, 47, 49, 50, 51, 58, 68, 76  
 Leech, Lynda 12, 25, 42, 43, 45, 46, 47, 49, 50, 51, 56, 57, 69  
 Littlehale, Ellen 25, 42, 53  
 Long, Rex 29  
 Lumpkin, Ronnie 29, 55  
 Magee, Sue 25, 42, 45, 46, 47, 49, 51, 68, 69  
 Marlowe, Max 25  
 Marshall, Sharon 25, 50, 51  
 Martin, Dale 25  
 Mays, Penny 25, 49, 53  
 Meyer, Peggy 25, 45, 49, 53

Milhous, Nancy 25, 49, 53  
 Misner, Judy 25, 40, 46, 47, 49, 50, 51, 58  
 Mitchell, Delbert 25, 55  
 Morrison, Steve 26  
 Muncy, Marsha 26, 45  
 Musgrave, Mike 12, 26, 42, 43, 44, 45, 47, 57, 60, 62, 69, 86, 87  
 Neal, Marcell 26  
 Newby, LouDella 26  
 Newlin, Max 26, 55, 56, 57, 58, 76, 79, 86, 87  
 Newlin, Teresa 26, 43, 45, 46, 47, 49, 53, 68  
 Nysewander, Victor 26, 54  
 Oliver, Dorothy 26, 49, 53, 66  
 Osborn, David 26, 47, 54  
 Overby, Jannie 26  
 Pershing, Judy 26, 49, 65  
 Powell, Judy 20, 27, 45, 52, 53  
 Ray, Larry 27  
 Richardson, Ronnie 27  
 Riley, Neil 27  
 Robinson, Anna 27, 53  
 Rushton, Lorna 27, 49, 51, 76, 81  
 Sanford, Jane 27, 46, 49, 50, 53  
 Saxon, Mary 27, 45, 46, 49, 53  
 Scholl, Claudia 27, 42, 43, 45, 46, 47, 51, 53  
 Schultz, Beverly 27, 46, 47, 52, 53, 56  
 Sharer, Don 20, 27, 40, 45, 47, 58, 62, 76, 77, 89  
 Sheets, Helen 27, 49, 53  
 Simpson, Richard 28, 45, 47, 54, 68  
 Sims, Sharon 28, 46, 50, 51, 52, 53, 56  
 Skorjanc, Marsha 28, 49, 50, 51, 58  
 Smock, Linda 28, 46, 47, 51, 52, 53  
 Snodgrass, Carolyn 28, 49  
 Stanley, Loretta 28, 49, 53  
 Stanley, Wayne 28  
 Svendson, Jerry 28, 86  
 Swarn, Harry 28, 44, 45, 47, 57, 58, 59  
 Trucks, Jack 28  
 Turner, Al 28, 47, 68, 70, 76, 79  
 Turner, Ann 28, 45, 47, 49, 53, 56, 69, 70  
 Whited, David 20, 29, 44  
 Wingle, Harold 29  
 Wootton, Larry 29, 55

## JUNIORS

Andrews, Bill 31, 76  
 Arden, Nancy 31, 42, 45, 46, 48, 57  
 Ashworth, Paul 34, 85  
 Atkinson, Carolyn 31, 48, 49  
 Austin, Jo Ann 31, 45, 48  
 Averette, Barbara 31, 48  
 Baines, Bob 31  
 Baldwin, Susan 31, 48  
 Bally, Bill 30, 31, 43, 47, 68, 83  
 Barnaby, Dorothy 30, 31, 48, 51, 76, 81  
 Bayles, Bruce 31  
 Bayliff, Sandy 31, 47, 51, 53  
 Bennett, Forrest 31, 47, 58  
 Blair, John 31, 56  
 Blanton, John 31  
 Bly, Sally 30, 31, 43, 45, 46,  
 Bolen, Susan 31, 46, 47, 48, 53, 68



Brinker, Gloria 31, 47, 53  
 Burns, Jill 31, 46, 48, 51, 57  
 Calbert, Gretchen 31, 48  
 Carter, David 31, 56, 76, 85  
 Castetter, Carl 31, 76, 80, 83, 86  
 Castetter, Marsha 31, 51, 53, 56, 58  
 Christopher, Don 34  
 Claxton, Pat 31, 47, 50, 51, 53, 82  
 Cooper, Dean 31, 42, 44, 45, 47, 54, 57, 68, 69, 70  
 Copeland, John 31, 56, 76  
 Cornelius, Ann 31, 47, 52, 53  
 Corrie, Martha 31, 46  
 Covert, Sharon 31, 53  
 Craige, Janice 31, 45, 47, 48, 51, 57, 59  
 Crews, Diane 31, 48, 51  
 Crowe, Darlene 32, 48  
 Cummings, Jerry 32, 76  
 Curtis, Glenn 32, 42  
 Daum, Russell 32  
 Decker, Bill 32, 83  
 Deissler, Hazel 32  
 Engle, Judy 32, 59  
 Etherington, Howard 32  
 Ferrell, Jerry 32, 83, 86  
 Ferrell, Larry 32, 44, 47, 54, 83, 86  
 Friel, Faith, 32, 48, 59  
 Gaddie, Doris 32  
 Gannon, Earl 32, 56  
 Gorman, David 32, 42, 47, 54, 56, 57, 59, 68, 69  
 Gosnell, Jo Ann 32, 51, 53  
 Green, Mark 32  
 Groninger, Judy 32, 51, 53, 56, 57  
 Hancock, Steve 32  
 Happell, Peggy 32, 48, 59  
 Hardin, James 32, 76  
 Hardin, Rita 32, 43, 45, 48, 49, 51  
 Harris, Kenneth 32  
 Heald, Eileen 32, 48, 56  
 Hopkins, Linda 32, 48  
 Hutchens, Rosalie 32, 48  
 Janssen, James 32  
 Jones, Martha 32  
 Karpel, Robert 32, 47, 54, 59  
 Keck, Ronnie 32, 45, 59, 86  
 Keller, Sandy 32, 48  
 Lease, Janice 33, 46, 47, 51, 56, 57, 59, 71  
 Leech, Carolyn 33, 42, 43, 45, 46, 47, 48, 50, 51, 59, 65  
 Long, Carolyn 33, 46  
 McAninch, Cheryl 33, 46, 51, 53  
 McIndoo, Mary 33, 46  
 McMullin, Odis 33  
 Mabrey, Eunice 33, 53  
 Marks, Mike 33, 42, 45  
 Martin, Walter 33, 55  
 Maupin, Maxine 33, 53  
 Mays, Linda 33, 53  
 Miracle, Darryl 30, 33, 45, 59, 83  
 Mitchell, Carol 33, 48  
 Mitchell, Don 33  
 Neel, Nina 33, 48, 66  
 Newlin, Mary F. 33

Nichols, Jack 33, 54, 59, 76, 85  
 O'Brien, Karen 33, 48  
 Olvey, Don 33  
 Parsley, Jerry 33  
 Pettit, Jim 33, 58, 76  
 Pickett, Tom 33  
 Piper, Sue 33  
 Polson, Linda 34, 48  
 Pope, Jon 33, 76, 80, 83, 86  
 Powell, Bonnie 33, 46, 48  
 Priest, Sharon 33, 45, 46, 53  
 Raper, Bud 33, 76  
 Ray, Janice 33,  
 Rush, Larry 33, 54  
 Rushton, Dianne 33, 48, 51, 70  
 Schendel, Tom 34, 45, 57  
 Schlegel, Sandra 34, 53  
 Shadwick, Scott 34, 76, 80  
 Sharer, Rob 34, 59, 76  
 Shook, Raymond 34, 55  
 Sims, Jim 34  
 Skolaut, Carolyn 34, 48, 53, 56  
 Slaughter, Mike 34, 45, 47, 54, 58, 59, 68  
 Smith, Nancy 34, 48, 53  
 Sommers, Kathe 34  
 Southworth, Alice 34, 48, 53  
 Stafford, Robert 34, 54, 59  
 Stanley, Judy 34, 45, 48, 49, 51, 57  
 Steele, Wally 34  
 Sterrett, Bob 34, 54  
 Storms, Linda 34, 46, 48, 51, 53, 56, 57  
 Sutton, Harold 34  
 Sutton, Loretta 34  
 Svendsen, Larry 34, 57, 59, 76, 85  
 Swan, Sam 34, 76  
 Swarn, Emma 34, 44, 46, 47, 53, 56, 57, 59  
 Swarn, Richard 34, 56, 57, 59  
 Tompson, Rose 34  
 Wade, Ed 34, 86  
 Walker, Connie 34, 48, 51, 53, 56, 57  
 Watson, Shirley 34  
 Weddle, Jack 34  
 Whitaker, Bill 34  
 White, Jill 34, 46, 48, 51, 53, 58, 70  
 Willis, Rita 34  
 Wilson, Judy 34  
 Wilson, Paul 34  
 Winstead, Marilyn 34  
 Winstead, Max 34  
 Wittorff, Judy 34, 43, 46, 47, 48, 49, 56, 57, 59, 69  
 Wright, Larry 34  
 Young, Carol 34, 48, 53  
 SOPHOMORES  
 Alexander, Nancy 36, 43, 48, 51, 57  
 Anderson, Larry 36  
 Arnold, Mary 36, 46, 47, 58, 59  
 Baker, Ann 36, 48, 51  
 Bissey, Annette 36, 48  
 Blanton, Carol 36, 53  
 Boles, David 36, 54, 56  
 Bowman, Diane 36, 48



Brandgard, Robin 36  
 Brizendine, Jim 36  
 Brunson, Mary 36, 46, 51, 53, 59  
 Buis, Bonnie 36, 48, 51, 66  
 Campbell, Diana 36, 48, 51, 58  
 Canary, Russell 36, 54  
 Chandler, Paul 36, 55  
 Cook, Eddie 36, 47, 59, 68  
 Culver, Lorin 36  
 Davis, David 36, 46, 59  
 DePriest, Jack 36  
 Dewar, David 36  
 Earhart, Mike 36, 76, 80, 85  
 Edmondson, Jim 36, 57, 76, 80, 85  
 Edwards, Bernard 36  
 Ellis, Mildred 36, 48  
 Etchason, Beverly 36, 47, 51  
 Fields, Marcia 36, 48, 53, 58  
 Fields, Patty 36, 53  
 Finchum, Robbie 36, 46, 59  
 Foley, Jerry 36, 59  
 Fouts, Castyle 36  
 Ford, Carol 37, 48, 53  
 Frederick, Raymond 37  
 Fulkerson, Bob 37  
 Getchell, Martha 37, 47, 48, 51  
 Givens, Robert 39  
 Grable, Barbara 37, 48, 51  
 Greene, Charles 35, 37, 44, 85  
 Gribble, Ronnie 37, 46, 57, 59  
 Hallatt, Bonita 37  
 Harlan, Steve 37, 76, 83, 86  
 Hartgraves, Beverly 37, 53, 59  
 Harvey, Wayne 39  
 Hayden, Terry 35, 37, 44, 70, 85  
 Heald, Robert 37, 55, 57  
 Heald, Diana 37, 47, 48, 51, 56  
 Hicks, Judy 37, 48  
 Holz knecht, Larry 37  
 Jenkel, Sidney 37, 42, 47, 56, 57  
 Jennings, Carolyn 37, 47, 48, 51  
 Johnson, Pam 37, 47, 48, 51  
 Johnston, Vicki 37, 51, 56, 57, 82,  
 Jones, Margaret 37  
 Kellum, Evalyn 37, 46, 48, 51, 57  
 Kellum, Kathy 37, 47, 48, 51, 56, 69, 82  
 Kern, Harry 37, 76  
 Killman, Betty 37, 59  
 Kirsch, Judy 37, 46, 48, 51  
 Kyle, Loretta 37  
 Lampert, Thomas 37  
 Lane, Mary Lou 37, 48, 51  
 Lawton, Leigh 37, 54  
 Long, Peggy 37, 51  
 Long, Rosemary 38, 53  
 Lynch, John 38, 76  
 Lynch, Sally 38, 48, 51  
 McDaniel, Ted 38, 55

Mahan, Mary 38, 53  
 Mayer, Susan 38, 48, 51  
 Meeks, Mason 38, 76, 83, 86  
 Mitchell, Mike 38  
 Modglin, Bill 38  
 Mullican, John 39, 76, 80  
 Muncy, Gwinetta 38  
 Neal, Karen 38, 53, 59  
 Newlin, Susan 38, 48, 51  
 Pell, Randy 38  
 Pope, Don 38, 76, 83, 86  
 Price, Larry 38  
 Raper, Todd 38, 76, 80  
 Rhea, Ronald 38, 59  
 Robson, Jay 38  
 Roth, Virginia 38, 47, 59  
 Schenck, Georgianna 38, 48, 51, 53  
 Searcy, Revin 38  
 Sharp, Marilyn 38, 48, 49, 58  
 Simmons, Judy 38, 46, 48, 51, 55  
 Skirvin, Ronald 38  
 Skorjanc, Bill 38, 80  
 Smith, Bill 38  
 Stafford, Don 38, 56, 59  
 Stamper, David 39  
 Stamper, Jane 38, 48  
 Stanley, Annamae 38, 48, 51, 56  
 Starbuck, Sandra 38, 48, 56  
 Storms, Mike 39, 56  
 Sullivan, Carl 39, 80  
 Swarn, Charles 39, 57, 80  
 Swift, Meredith 39, 48  
 Switzer, Mike 39, 80  
 Taylor, James 39  
 Tompkins, Pat 35, 39, 44, 47, 48, 51, 56, 70  
 Trusty, Richard 39, 76, 80  
 Utt, Ernie 39  
 VanWinkle, Terry 39, 54  
 VanGordon, Mike 39  
 Vickers, Nancy 39, 56  
 Wagner, Diana 39, 48  
 Wagner, Robert 39  
 Ward, Kenneth 39, 80  
 Watson, Mary Jo 39, 48, 51  
 Watts, Robert 39, 54  
 Weber, Judy 39, 48  
 Webster, John 39, 80  
 Welch, Kay 35, 39, 44, 48, 51, 82  
 Westbrook, Linda 39  
 Whicker, Garford 39, 43, 47  
 Whited, Sue 39, 48  
 Wiggins, Steve 39  
 Wilson, Joe 39  
 Wise, William 39, 47, 59, 69, 76, 80  
 Wiseman, Betty 39  
 Wootton, Walter 39  
 Young, Phyllis 39, 48



# Advertisers

Barlow & Arnold Insurance  
 Bob Hall Insurance  
 Bryant's Barbershop  
 Burger Ranch  
 Case's Market  
 C & E. Drugs  
 Coca-Cola  
 Costin Buick  
 C. S. Mercer Co.-Printing  
 Culligan Soft Water  
 Cummins Sinclair  
 Cyril's Shoe Repair  
 Dairy Queen  
 Don Misner Food Plant  
 Dr. M. M. Aiken  
 Dr. N. Boone  
 Dr. J. E. Cochran, D.V.M.  
 Dr. Alan Johnston  
 Dr. R. H. Marlowe  
 Dr. O'Neill  
 Dr. Parker, D.V.M.  
 Dr. Bill Stafford  
 Dr. J. C. Stafford  
 Dr. L. B. Turner  
 Economy Printing  
 Edwards Cabinet Shop  
 Elkin's Bait Shop  
 Ellis Market  
 Emroe Sporting Goods  
 First National Bank & Trust  
 Frances Drake Insurance  
 Gay Hardware  
 Glen Masten Plumbing  
 Grimes Hotel & Cafe  
 Hall Funeral Home  
 Harmon's Jewelry  
 Harris Barbershop-S. Vine Street  
 Hensley's Gulf Service  
 Hobbs Nursery  
 Hylton's Bridgeport Garage  
 Jack & Jill Shop  
 Joe Knop Ford Sales  
 Johnny Havens Insurance  
 Kinnaman's Beauty Shop

Little Boy Blue  
 Lease Cleaners  
 Leech Lumber & Coal  
 Lewellen's Market  
 Loy's Ready-Mix  
 Lyon & Lyon Dress Shop  
 Mgc's Bar-B-Que  
 Maplehurst Dairy  
 Mark Hampton  
 Monday's Shell Service  
 Oasis Diner  
 Palace Barbershop-Guy Krebs  
 Parkeat  
 Paul Harris Department Store  
 Pedigo's Marathon  
 Plainfield Flower Shop  
 Plainfield Messenger  
 Plainfield Savings & Loan  
 Plainfield Super Drugs  
 Plainfield Variety Store  
 Porter's National Studio  
 Pres Hanna Chevrolet  
 Prewitt Theatre  
 Price Bros. Furniture  
 Public Service Co.-General Headquarters  
 Public Service Co.-Plainfield Office  
 Ralph & George Bryant, Standard Oil  
 R. G. Calbert, Accountant  
 R. G. Keller Toys  
 Robt. C. Crews  
 Sim's Standard Service & Plainfield Tire Store  
 Spencer Thomas Lumber Co.  
 Spot Cash Department Store  
 Stanley Feed Mill  
 Stanley's Launderette  
 Starken Publishing Co.  
 Seneff Hardware  
 Strafford Pharmacy  
 Sunshine Cafe  
 S & W. Builders  
 Thompson's Cabinet Shop  
 Walt's Service Station  
 Williams T. V.



*And so, with an eye to the future,  
we finish the school year.*



By the time the annual was ready for completion, our school had a warmer, homier look. Our principal, Mr. Abel, sits in the newly decorated lobby, well satisfied with his first year at Plainfield High School.



*Myers*  
**YEARBOOKS**  
*in deep tone*

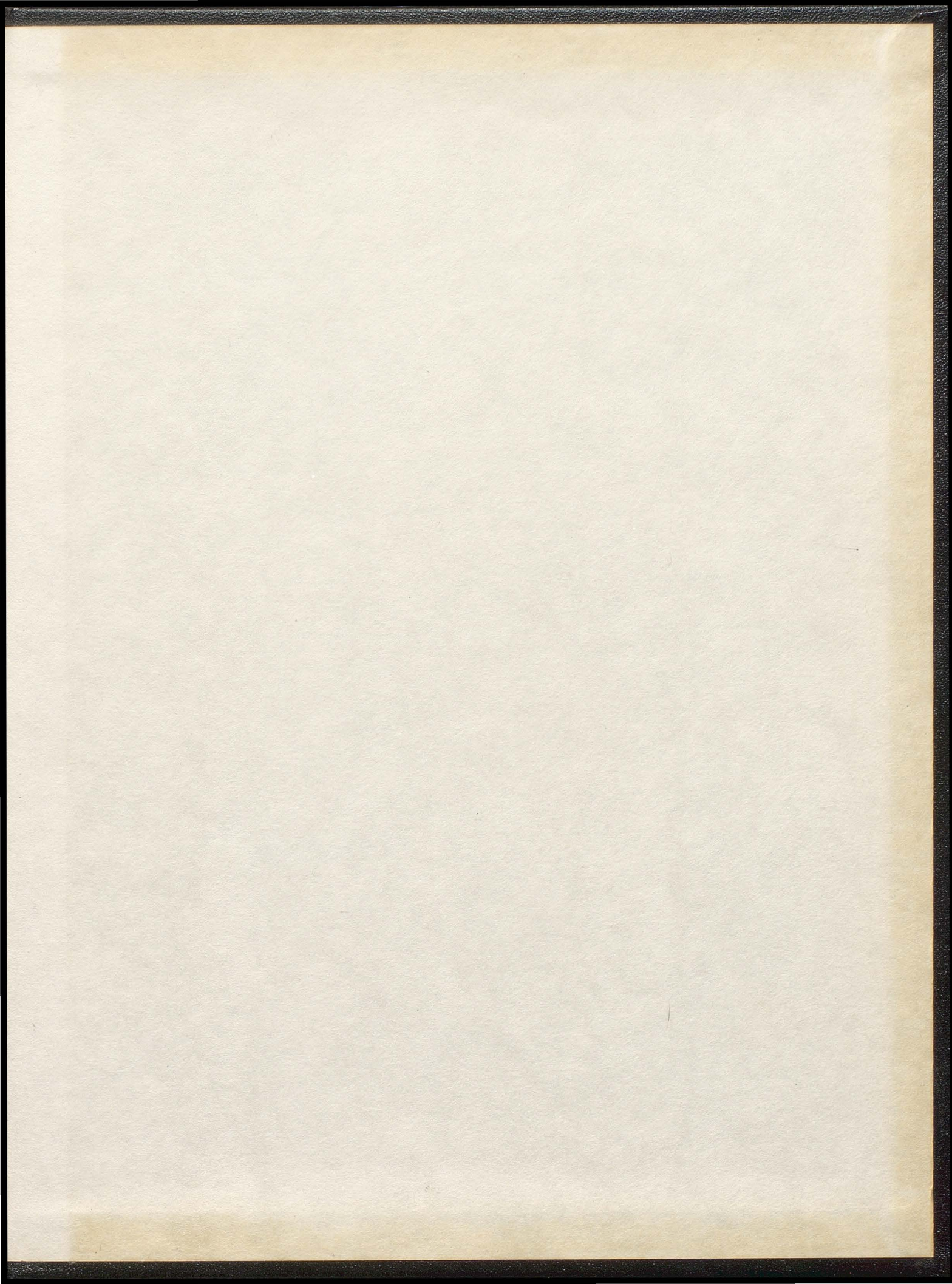




And so, when you are in the future  
and when you are in the past

THE  
LIBRARY  
OF THE  
MUSEUM OF  
ART AND  
ARCHITECTURE  
NEW YORK







COVER BY  
MYERS